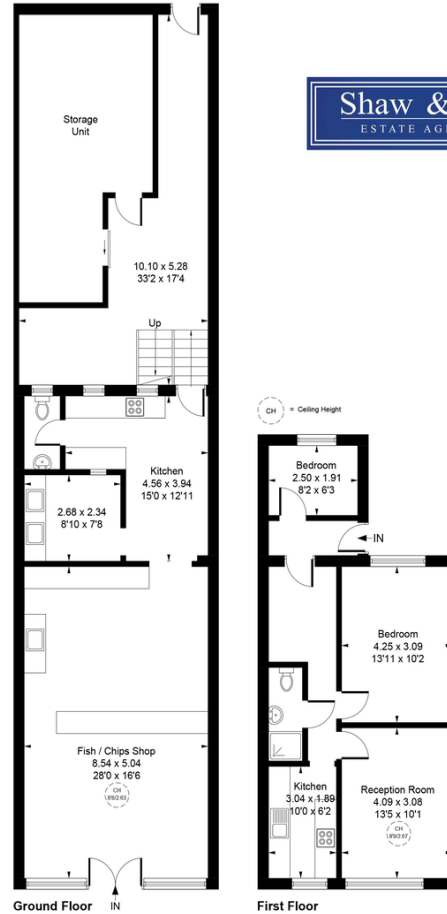






Approximate Gross Internal Area
 Ground Floor = 123.28 sq m / 1327 sq ft
 First Floor = 52.19 sq m / 562 sq ft
 Total = 175.47 sq m / 1889 sq ft



Whilst every attempt has been made to ensure the accuracy of the floor plan contained here, measurements of doors, windows, rooms and any other items are approximate and no responsibility is taken for any error, omission, or mis-statement. This plan is for illustrative purposes only and should be used as such by any prospective purchaser.
 © Vizion Property Marketing Produced for Shaw & Co.

Freehold Commercial Block & Business for sale near Northolt Tube Station. The commercial unit, comprising of a ground floor commercial currently used as a Fish & Chip Shop and first floor 2 bedroom flat. The total size of the commercial block is circa 1889 sqft.

The business has been running as a Fish & Chip shop for over 15 Years and was recently rebranded last year.

Located in a highly sought after area for any business, a busy parade with plenty of foot flow, within walking distance to Northolt Tube Station (Central Line) and close proximity to the A40.

- Commercial Shop - 1327 sqft
- 2 Bedroom Flat - 562 sqft