

For Sale 3 bed house



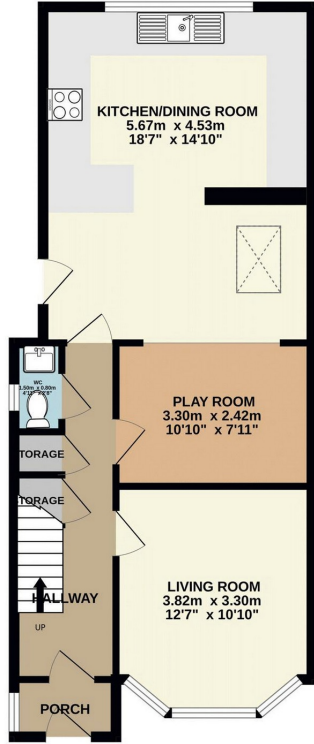
- › 3 BEDROOMS
- › MODERNISED SEMI
- › 2 RECEPTIONS
- › LARGE KITCHEN/DINER
- › FAMILY BATHROOM

Beautiful family home that must be seen. It comprises of 3 Bedrooms, large Kitchen/Diner, 2 further Receptions, Family Bathroom, separate Shower room, lovely size Garden and off street parking.

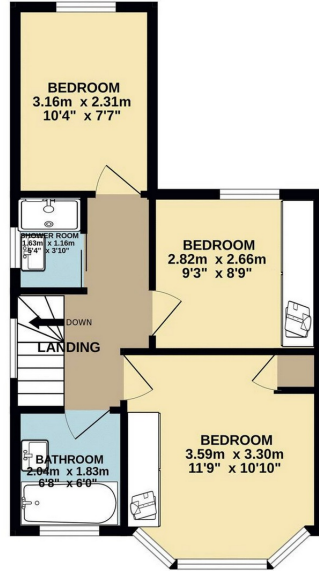




GROUND FLOOR
56.6 sq.m. (609 sq.ft.) approx.



1ST FLOOR
37.7 sq.m. (406 sq.ft.) approx.



BULLHEAD ROAD, BOREHAMWOOD, WD6 1RG

*Located on the South side of Borehamwood, not even a 5 minute walk from Yavneh Primary and Secondary Schools as well as Monksmead Primary, is this beautiful family home that must be seen.

*ComprisinG of 3 Bedrooms, large Kitchen/Diner, 2 further Receptions, Family Bathroom, separate Shower room, lovely size Garden and off street parking.

*The property has been extended and decorated to a high standard. It is also close to all Borehamwood amenities as well as great transport links.

*Beautiful Family Home

*Three Bedrooms

*Large Kitchen/Diner

*Two Receptions

*Family Bathroom & Separate Shower Room

*Garden

*Off Street Parking

*Less than 5 Minute Walk to Yavneh & Monksmead Schools

*Entrance Porch

Quickstep laminate flooring, spotlight. double glazed window to side aspect.

*Entrance Hallway

Quickstep laminate flooring, spotlights, radiator.

*Living Room 12' 7" x 10' 10" (3.83m x 3.30m)

Carpeted throughout, double glazed windows with fitted shutters to front aspect, radiator.

*Downstairs WC 4' 11" x 2' 8" (1.50m x 0.81m)

Quickstep laminate flooring, low level WC, wash basin with mixer tap and storage cupboard, obscured double glazed window to side aspect.



34 Golders Green Road, London NW11 8LL

murray@dreamviewestates.co.uk

020 8455 0055

best
agent

*Kitchen/Diner 18' 7" x 14' 10" (5.66m x 4.52m)

Quickstep laminate flooring, fully fitted units both wall mounted and base, ample work surface area including a peninsula, Quartz worktops, sink with mixer tap, Neff induction hob, cupboard spaces for both washing machine and tumble dryer, integrated Neff dishwasher, integrated Bosch fridge, integrated Bosch freezer, spotlights, double glazed side door with access to garden, radiators.

*Play Room 10' 10" x 7' 11" (3.30m x 2.41m)

Quickstep laminate flooring, radiator,

*Bedroom 1 11' 9" x 10' 10" (3.58m x 3.30m)

Carpeted throughout, fully fitted wardrobes and bedside tables, double glazed windows and fitted shutters to front aspect, radiator.

*Bedroom 2 10' 4" x 7' 7" (3.15m x 2.31m)

Carpeted throughout, fully fitted wardrobes and bedside tables, double glazed windows to rear aspect, radiator.

*Bedroom 3 9' 3" x 8' 9" (2.82m x 2.66m)

Carpeted throughout, fully fitted wardrobes, double glazed windows to rear aspect, radiator.

*Family Bathroom 6' 8" x 6' 0" (1.62m x 1.17m)

Tiled floor, fully tiled walls, low level WC, fitted wash basin with mixer tap, bath with overhead shower, obscured double glazed windows to front aspect, spotlights, heated towel rail.

*Shower Room 5' 4" x 3' 10" (2.03m x 1.83m)

Tiled floor, fully tiled walls, shower cubicle with overhead rain shower and handheld shower, wash basin with mixer tap and storage beneath, obscured double glazed window to side aspect, spotlights, heated towel rail.

*Landing

Carpeted throughout, spotlights, loft access with pull down ladder attached.

*Rear Garden

Patio area, laid to lawn, shed.

*Off street parking to Front

*PRICE £675,000 FREEHOLD

COUNCIL TAX BAND D

EPC BAND D



34 Golders Green Road, London NW11 8LL

murray@dreamviewstates.co.uk

020 8455 0055

best
agent