

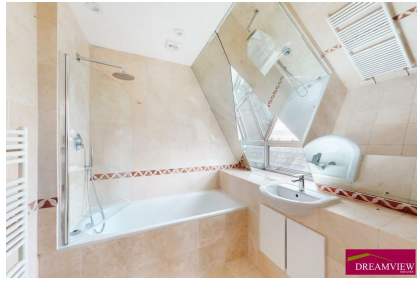
To Let 3 bed flat

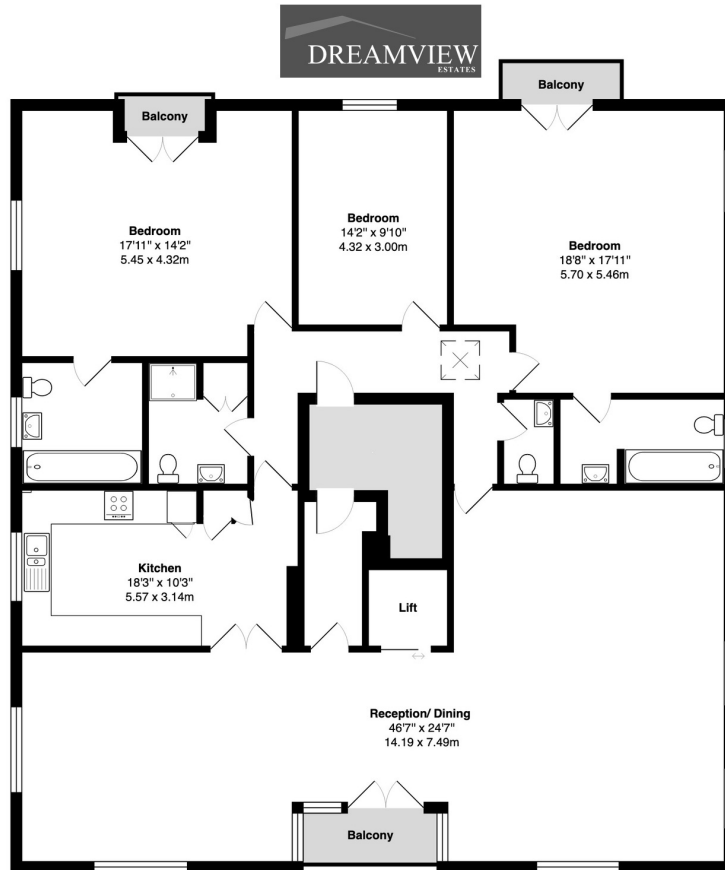


- › 3 BEDROOMS
- › 2128 sq ft/198 sq mt
- › 3 BATHROOMS (2 EN SUITE)
- › 46' RECEPTION
- › 3 BALCONIES

A huge 3 bedroom penthouse flat of some 2128 sq ft/198 sq mt i providing bright and spacious living accommodation in a purpose built block with some of the best panoramic views of Hendon Park and the London skyline. * The has direct lift entry







3rd Floor

Penthouse, Highview House NW4

Total Gross Area: 2128 ft² ... 197.7 m² (excluding lift)

All measurements are approximate and for identification guideline purposes only, not to scale.
Compliant with the RICS code of measuring practice

PENTHOUSE, HIGHVIEW HOUSE, QUEENS ROAD, HENDON, NW4 2TH

A huge 3 bedroom penthouse flat of some 2128 sq ft/198 sq mt i providing bright and spacious living accommodation in a purpose built block with some of the best panoramic views of Hendon Park and the London skyline.

The has direct lift entry

These modern flats are situated within two minutes' walk from Hendon Central station, Brent
Street high street shops and other transport links.

*Key features

- *3-bedroom third floor flat
- *Direct lift access to the flat with possible shabbat option.
- *3 tiled bathrooms
- *2 En-Suite 1 separate WC
- * Large Reception/dining Room
- *Large Kitchen with granite worktops and integrated appliances
- *Tiled floors through hallway, and carpeted bedrooms
- *Video entryphone system
- *Air conditioning throughout the flat
- *Gas central heating with Megaflow System

COUNCIL TAX - BAND H

EPC BAND - BAND B

AVAILABLE NOW



34 Golders Green Road, London NW11 8LL

murray@dreamviewstates.co.uk

020 8455 0055

