



Key Features

LOTS OF POTENTIAL | SOUGHT-AFTER LOCATION | CLOSE TO THE M4 | CATCHMENT AREA FOR WELL-REGARDED SCHOOLS | TWO RECEPTION ROOMS | CLOSE TO LOCAL AMENITIES | BOOK YOUR VIEWING TODAY!

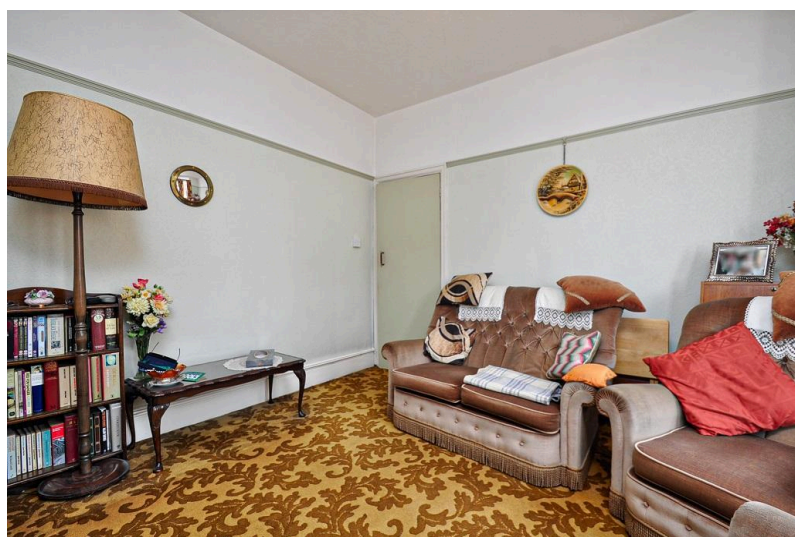
Discover the potential of this charming family home in the sought-after area of St Julians, Newport. This three-bedroom end-terrace house boasts bay windows to the front and original built-in cupboards, giving the property a touch of character.

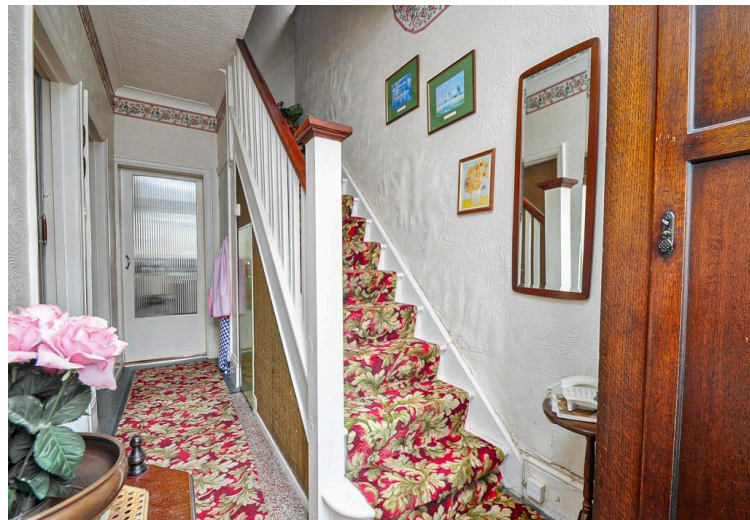
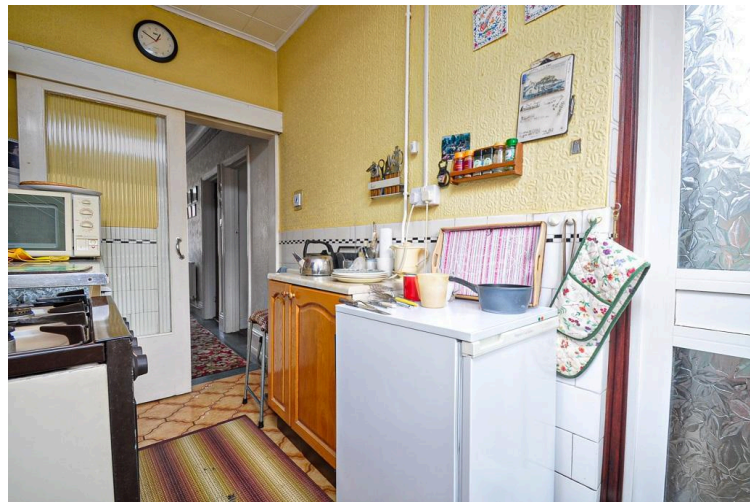
The property features three bedrooms and two reception rooms, offering plenty of space for your growing family. The house is perfect for families, first-time buyers or investors looking to make their mark on a property. With lots of potential, this home is just waiting for your personal touch.

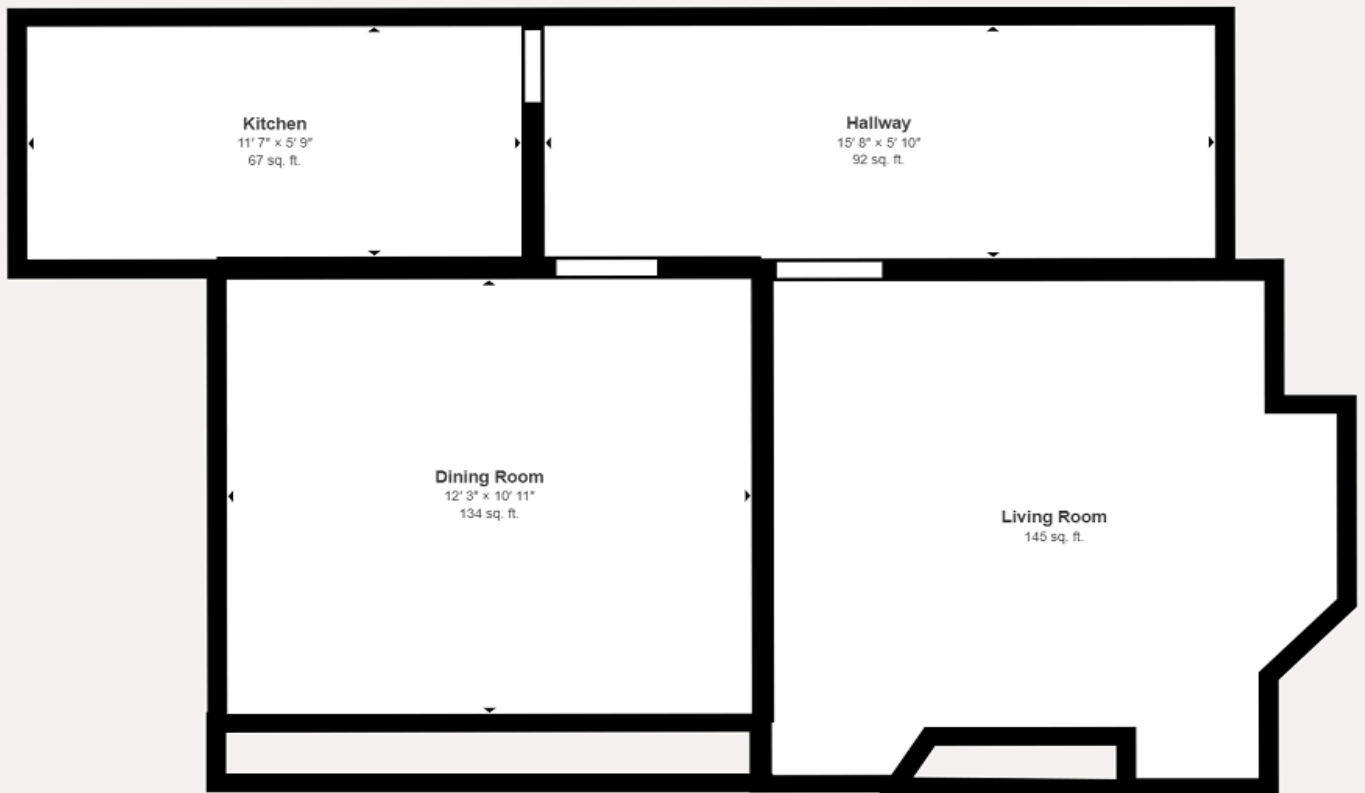
Situated in a convenient location, local amenities along Caerleon Road are within walking distance, making daily errands a breeze. The location is popular with families looking to be in the catchment area for the well-regarded schools, Glan Usk Primary School and St Julians High School. With a 1-minute drive to the M4 and easy access to Newport City Centre, commuting is a breeze for professionals on the go.

For those who enjoy being outdoors, the rear garden is the perfect place to spend time during the summer months. The grass lawn is perfect for the kids to play outside in the summer. If you enjoy gardening you can tend to the flowerbeds that line the lawn, or simply relax and enjoy the sunshine. Glebelands Park is less than a 10-minute walk away, providing a perfect spot for leisurely strolls or morning jogs. Don't miss out on this opportunity to view this property.

Contact us today to schedule a viewing and unlock the potential of this endearing home in St Julians.







Matterport Property Report:

32 Hubert Road

Indoor Scanned Area - Full Property 837 sq. ft. | Floor 1 438 sq. ft.

Sizes and dimensions are approximate, actual may vary

Visit 3D space on
Matterport



EpcUrl

DISCLAIMER

These particulars are intended to give a fair and reliable description of the property but no responsibility for any inaccuracy or error can be accepted and do not constitute an offer or contract. We have not tested any services or appliances (including central heating if fitted) referred to in these particulars and the purchasers are advised to satisfy themselves as to the working order and condition. If a property is unoccupied at any time there may be reconnection charges for any switched off/disconnected or drained services or appliances - All measurements are approximate.

property and lettings
Bluestone