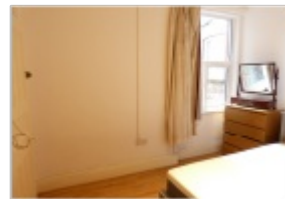
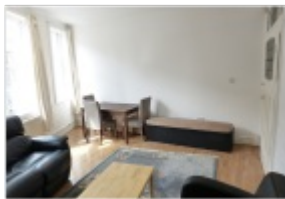


To Let 2 bed flat



- › 2 DOUBLE BEDROOMS
- › DOUBLE GLAZED WINDOWS
- › GAS CENTRAL HEATING
- › 2 MINUTES WALK TO GOLDERS GREEN TUBE STATION

A large two bedroom flat located a 2 minute walk from Golders Green tube station. The property benefits from wood flooring, two double bedrooms, an eat-in kitchen, double glazing and is offered furnished.





A large two bedroom flat located a 2 minute walk from Golders Green tube station.

The property benefits from wood flooring, two double bedrooms, an eat-in kitchen, double glazing and is offered furnished or unfurnished.

Available 01/04/24.

COUNCIL TAX BAND C



34 Golders Green Road, London NW11 8LL

murray@dreamviewstates.co.uk

020 8455 0055

**best
agent**