

**CRICKLEWOOD BROADWAY
LONDON NW2**



SHOWER ROOM
6'6" x 3'5"
1.98m x 1.04m

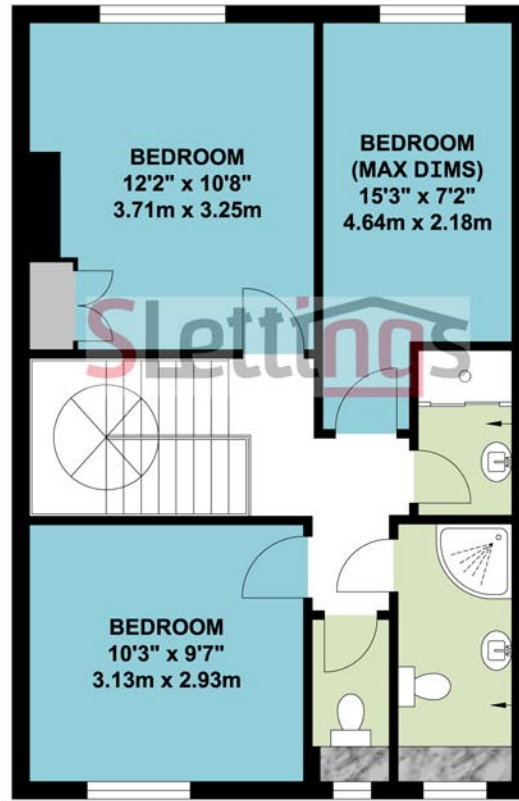
KITCHEN
12'8" x 6'9"
3.85m x 2.05m

BEDROOM
9'7" x 7'7"
2.93m x 2.30m

RECEPTION ROOM
18'1" x 12'3"
5.51m x 3.73m

**↑
IN**

SECOND FLOOR



SHOWER ROOM
6'2" x 3'6"
1.88m x 1.07m

SHOWER ROOM
9'6" x 4'3"
2.90m x 1.30m

BEDROOM
12'2" x 10'8"
3.71m x 3.25m

**BEDROOM
(MAX DIMS)**
15'3" x 7'2"
4.64m x 2.18m

BEDROOM
10'3" x 9'7"
3.13m x 2.93m

THIRD FLOOR

SECOND FLOOR FLAT

APPROX. GROSS INTERNAL FLOOR AREA 1027.09 SQ. FT / 95.42 SQ. M

WHILST EVERY ATTEMPT HAS BEEN MADE TO ENSURE THE ACCURACY OF THE FLOOR PLAN CONTAINED HERE, MEASUREMENTS OF DOORS, WINDOWS, ROOMS AND ANY OTHER ITEMS ARE APPROXIMATE AND NO RESPONSIBILITY IS TAKEN FOR ANY ERROR, OMISSION, OR MIS-STATEMENT. THIS PLAN IS FOR ILLUSTRATIVE PURPOSES ONLY AND SHOULD BE USED AS SUCH, BY ANY PROSPECTIVE PURCHASER.
FLOOR PLANS ARE NOT DONE TO "SCALE".