

3 Allnutts Road

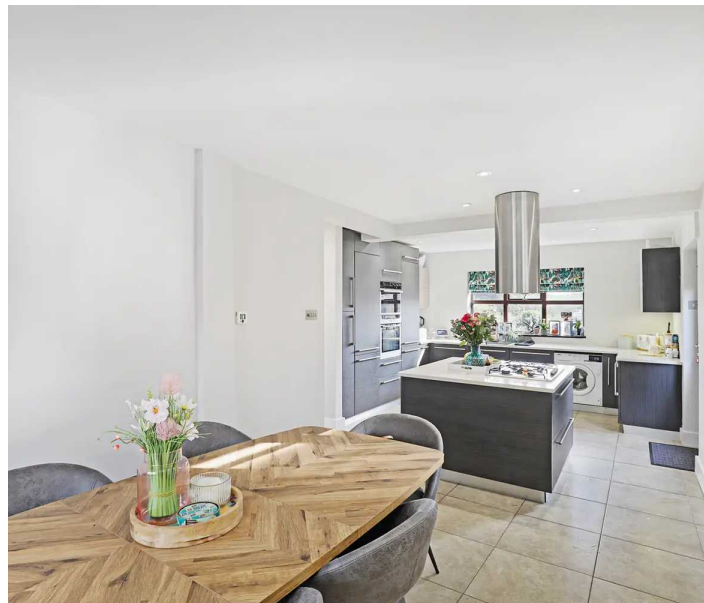
Epping, Essex

Guide Price £700,000

Council Tax band: E

Tenure: Freehold

- LARGE GARDEN
- OFF ROAD PARKING
- OPEN PLAN KITCHEN DINER
- DOWNSTAIRS WC
- CLOSE TO STATION AND IVY CHIMNEYS SCHOOL
- EN-SUITE TO PRIMARY BEDROOM
- WALK IN WARDROBE
- GARDEN ROOM



Porch

Hall

Kitchen/Dining Room

27' 4" x 12' 10" (8.34m x 3.90m)

Living Room

18' 7" x 13' 5" (5.66m x 4.08m)

Downstairs WC

Landing

Bedroom 1

12' 8" x 9' 9" (3.85m x 2.98m)

En-Suite to Primary Bedroom

9' 4" x 5' 7" (2.85m x 1.71m)

Bedroom 2

12' 10" x 10' 4" (3.90m x 3.15m)

Bedroom 3

12' 9" x 8' 2" (3.89m x 2.50m)

Bathroom

10' 4" x 5' 7" (3.15m x 1.71m)

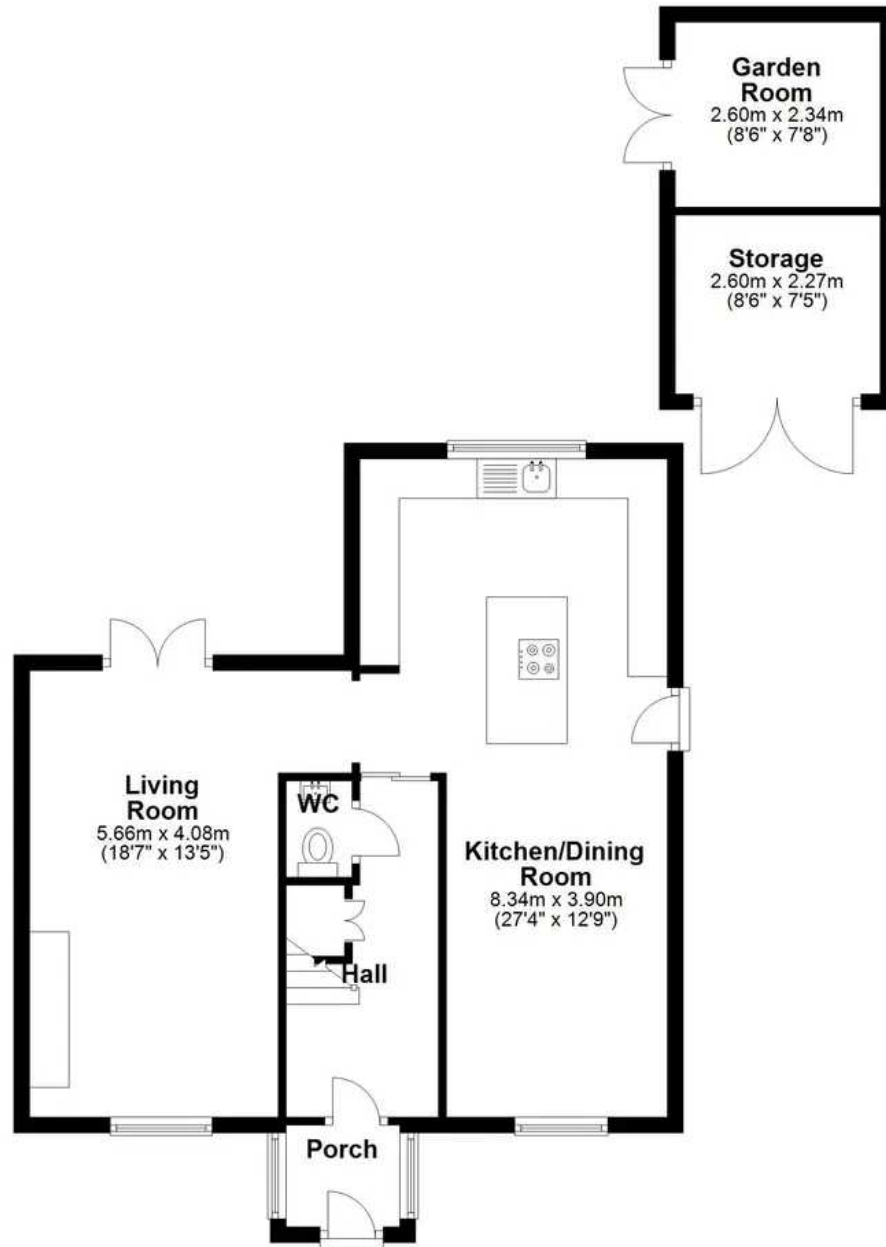






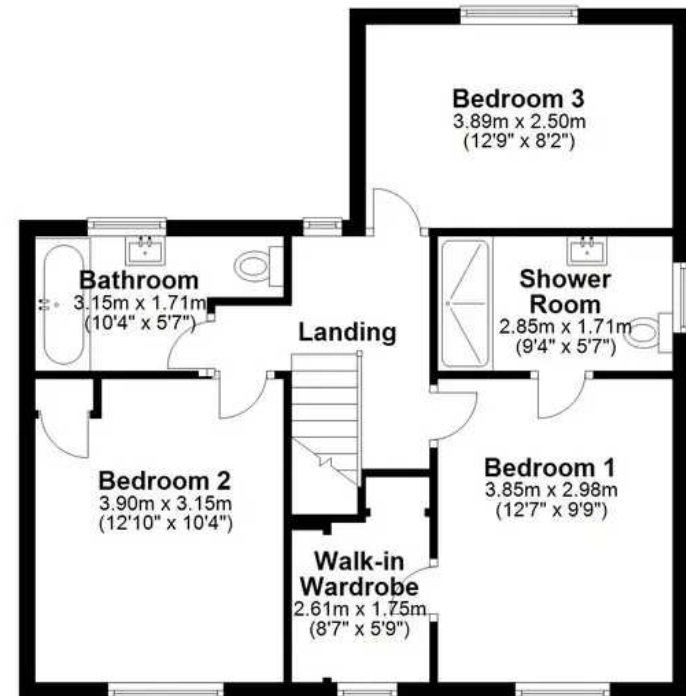
Ground Floor

Approx. 70.4 sq. metres (757.7 sq. feet)



First Floor

Approx. 55.8 sq. metres (600.4 sq. feet)



Total area: approx. 126.2 sq. metres (1358.1 sq. feet)