

Hill Cottage London Road

Harlow, Harlow

Council Tax band: E

Tenure: Freehold

- GRADE II LISTED COTTAGE
- CHAIN FREE
- LARGE REAR GARDEN
- AMPLE PARKING
- CLOSE TO M11
- TWO RECEPTIONS



Entrance Hall

Lounge

14' 9" x 11' 2" (4.50m x 3.40m)

Reception

15' 1" x 10' 10" (4.60m x 3.30m)

Kitchen

8' 6" x 15' 1" (2.60m x 4.60m)

Bathroom

5' 5" x 6' 6" (1.65m x 1.98m)

First Floor Landing

5' 7" x 7' 7" (1.70m x 2.30m)

Bedroom

15' 1" x 10' 6" (4.60m x 3.20m)

Bedroom

9' 1" x 11' 7" (2.77m x 3.52m)

Study

6' 3" x 8' 6" (1.90m x 2.60m)





Hammond
& Smith



Hammond
& Smith



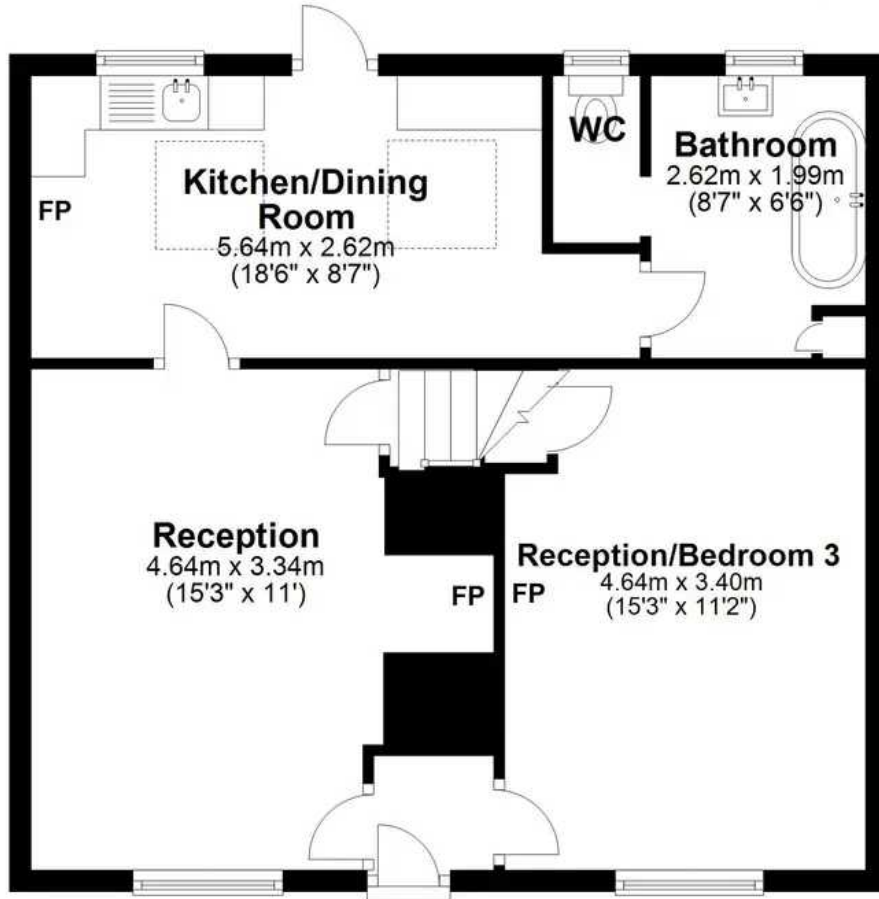
Hammond
& Smith



Hammond
& Smith

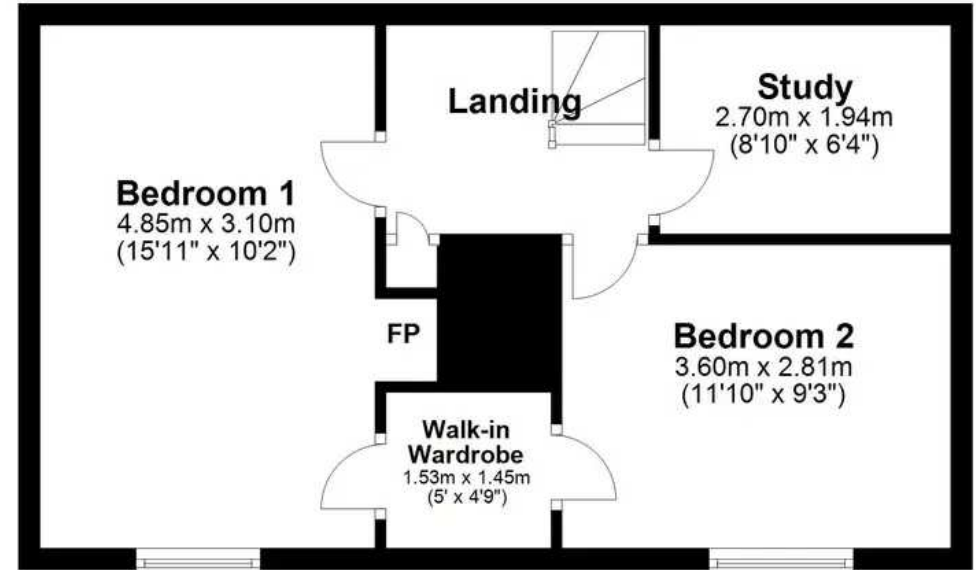
Ground Floor

Approx. 57.6 sq. metres (619.8 sq. feet)



First Floor

Approx. 40.2 sq. metres (432.2 sq. feet)



Total area: approx. 97.7 sq. metres (1052.0 sq. feet)