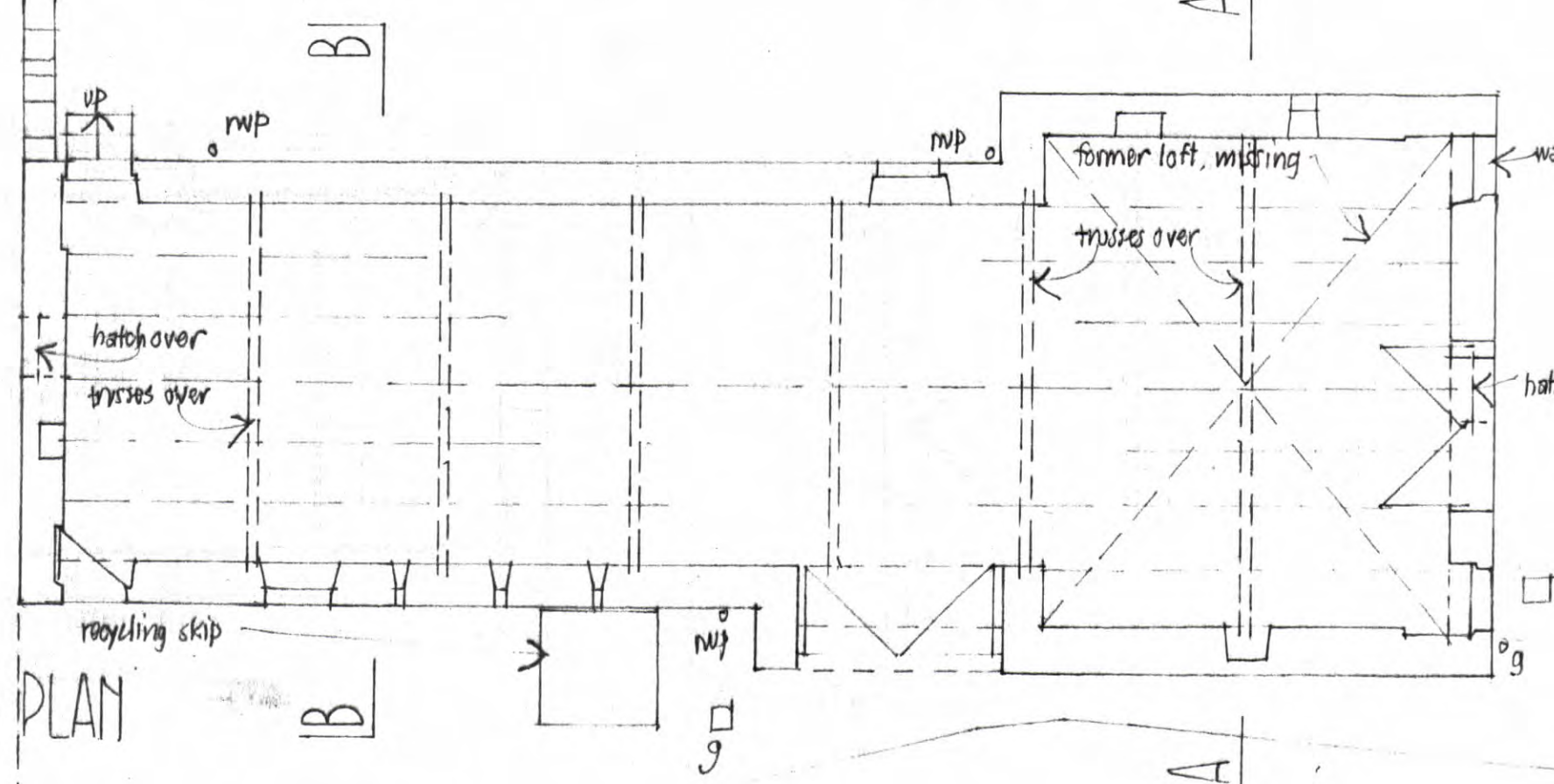
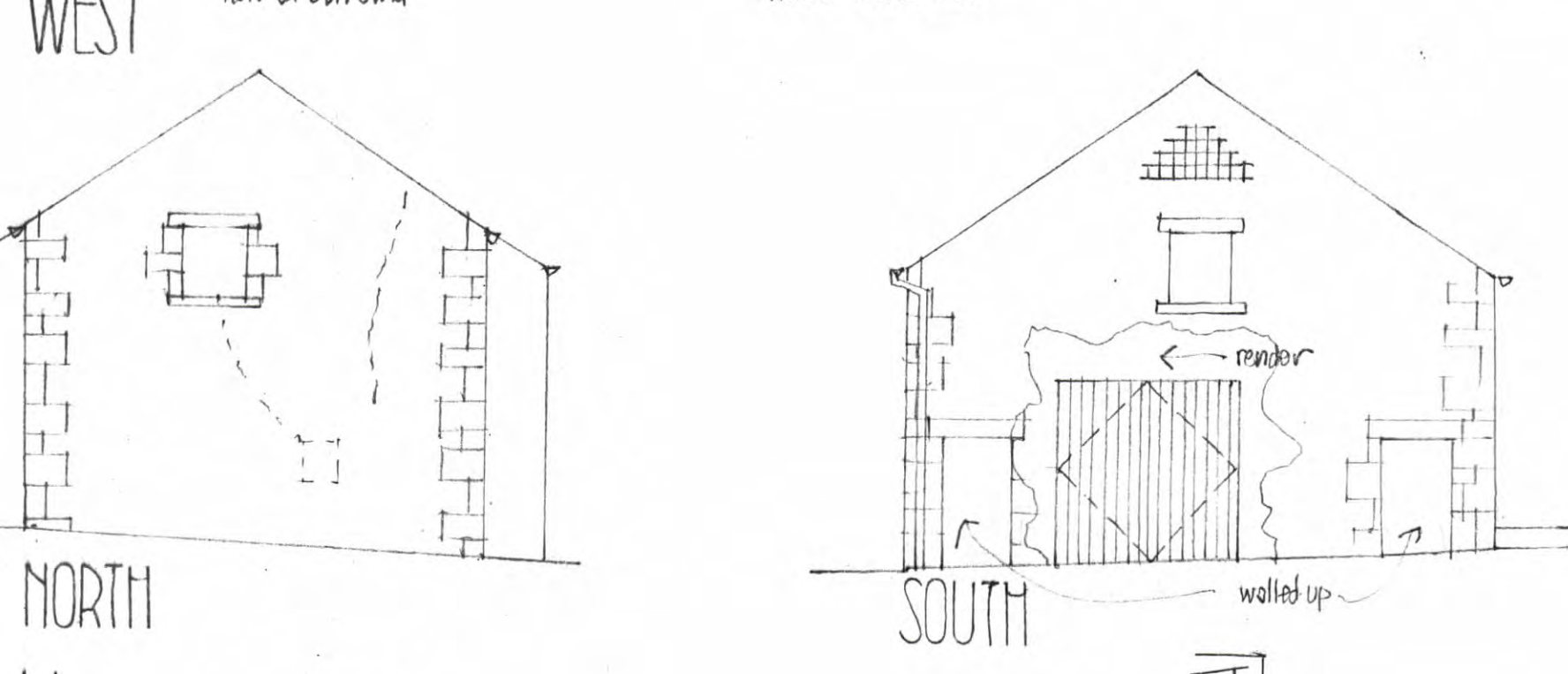
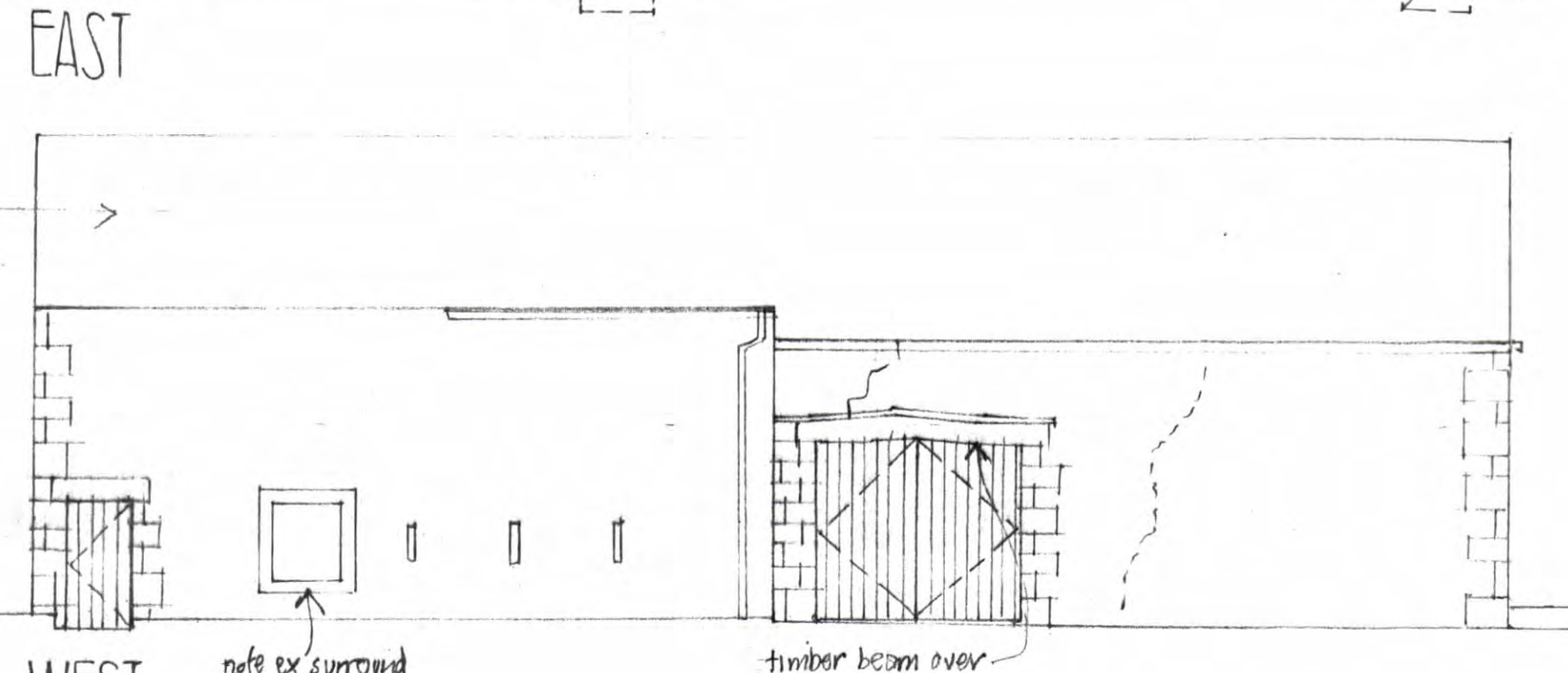
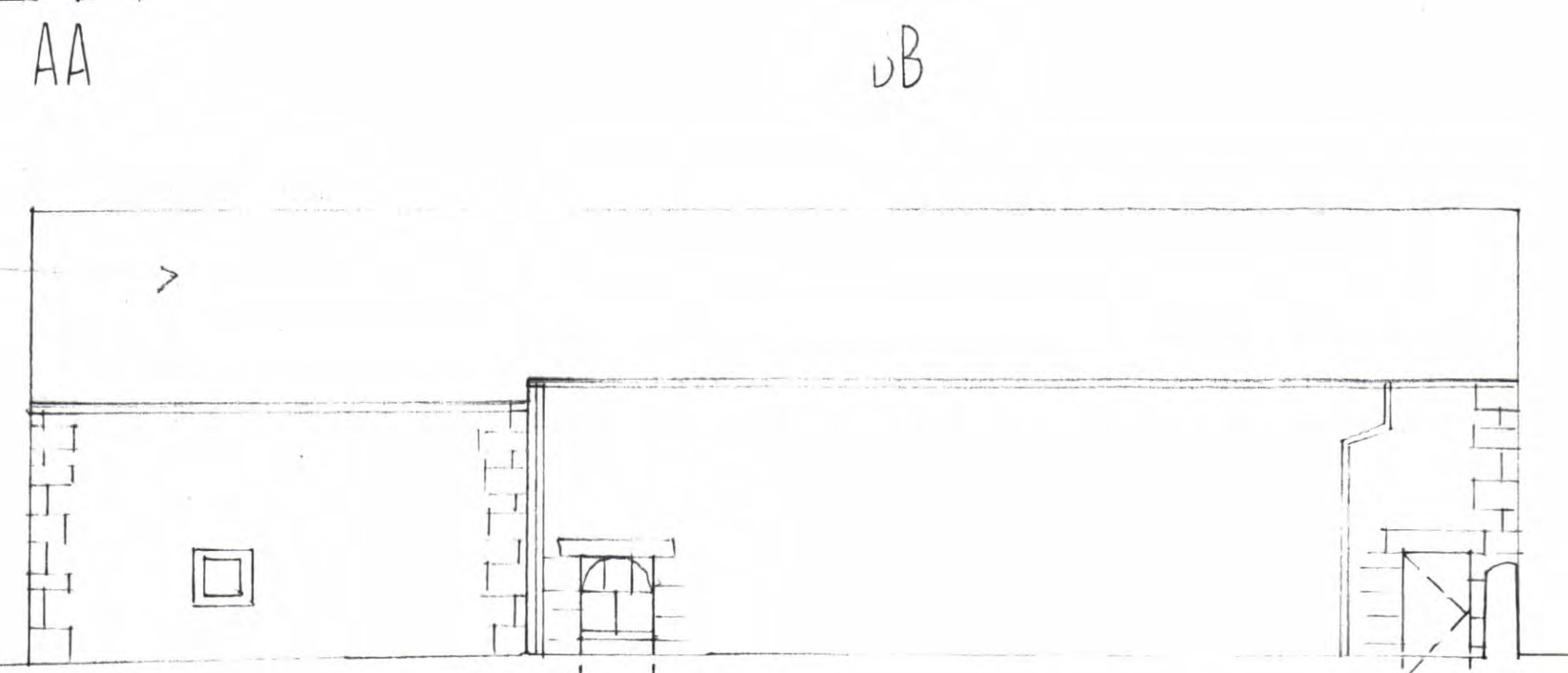
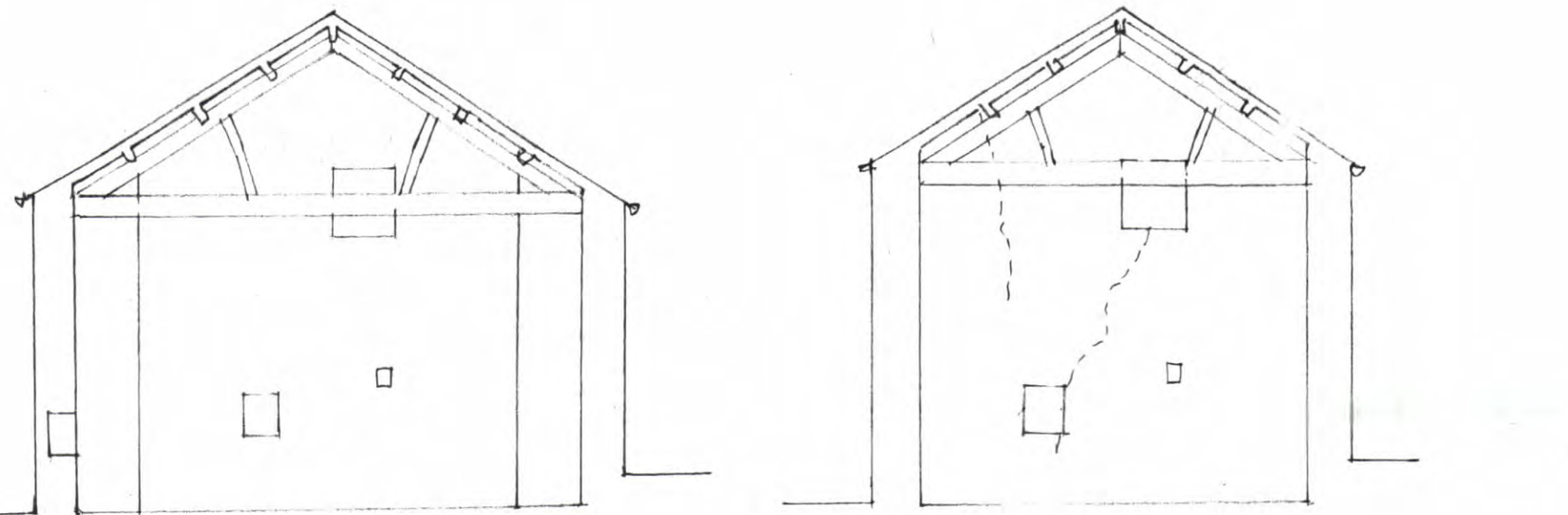
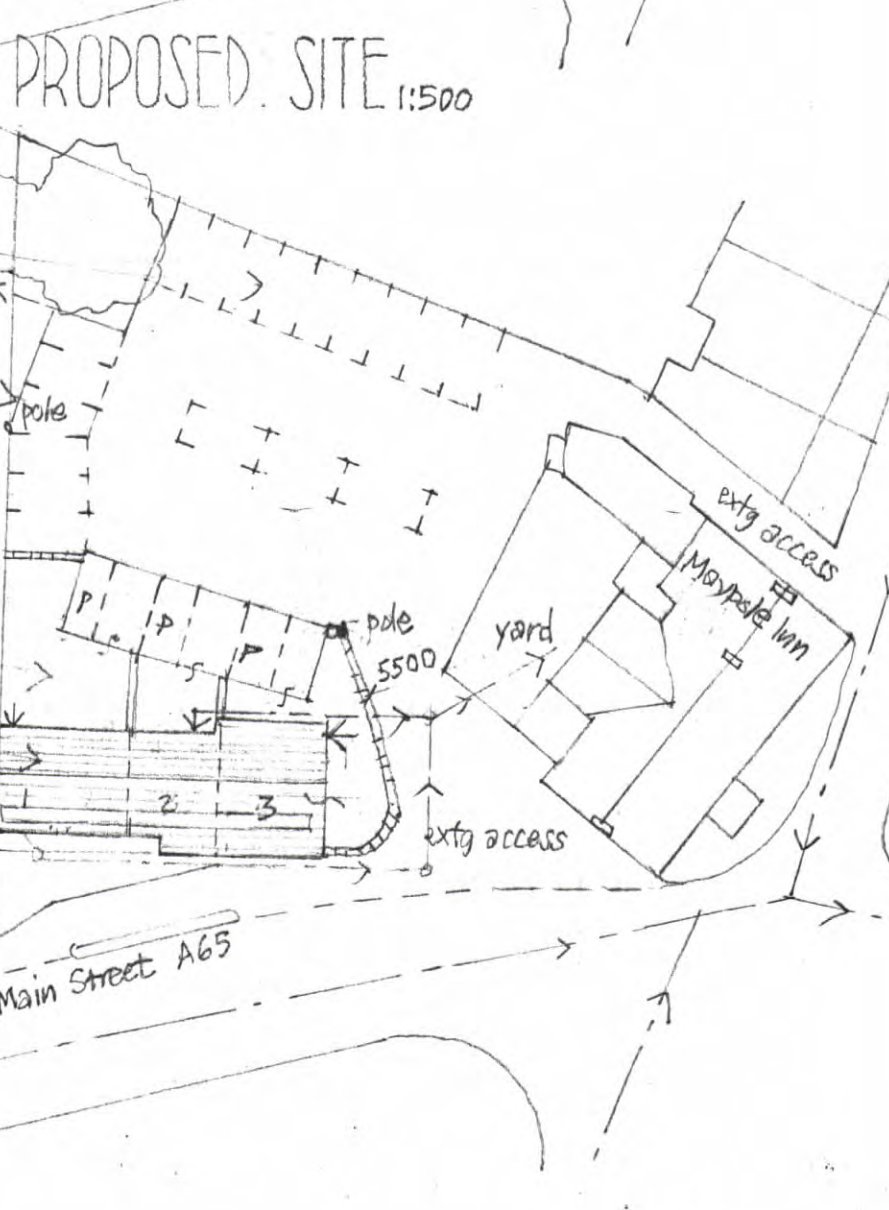
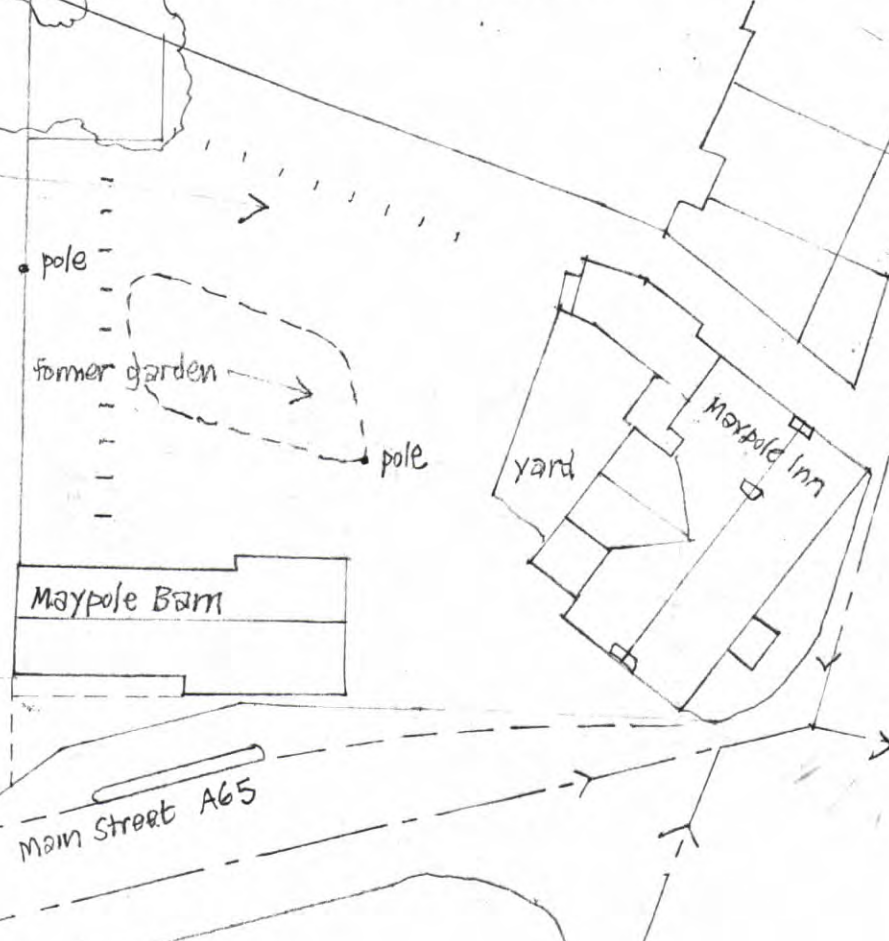
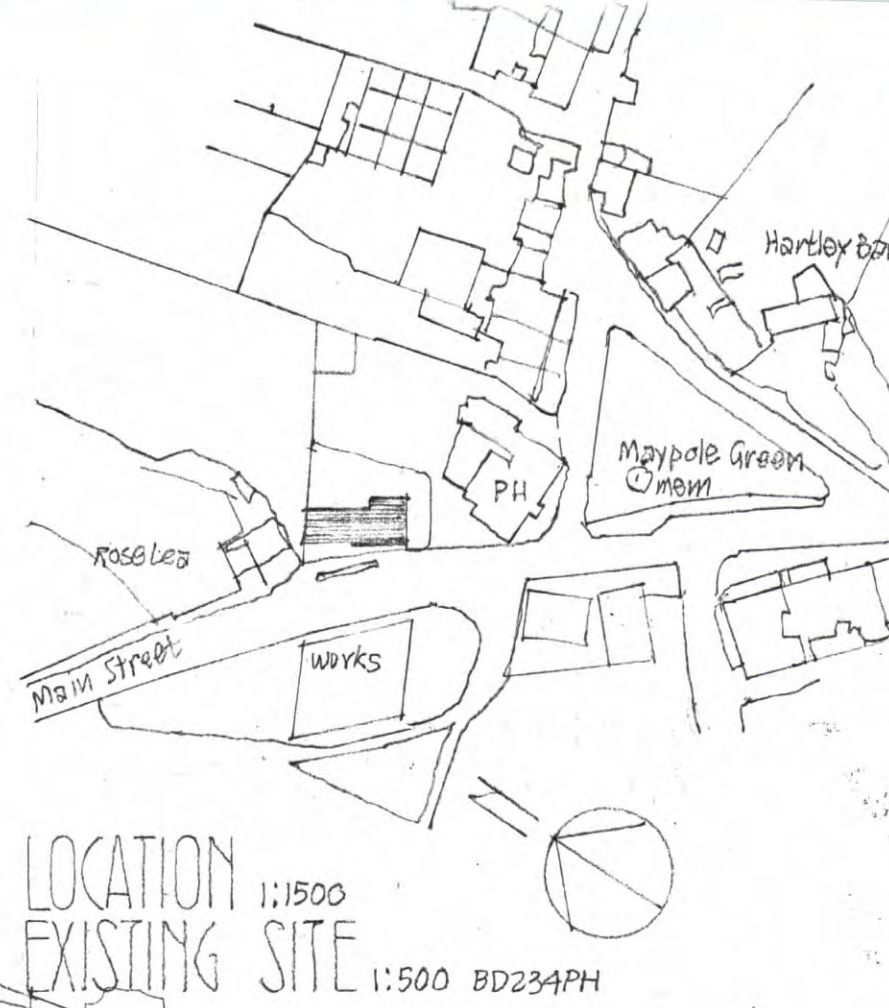
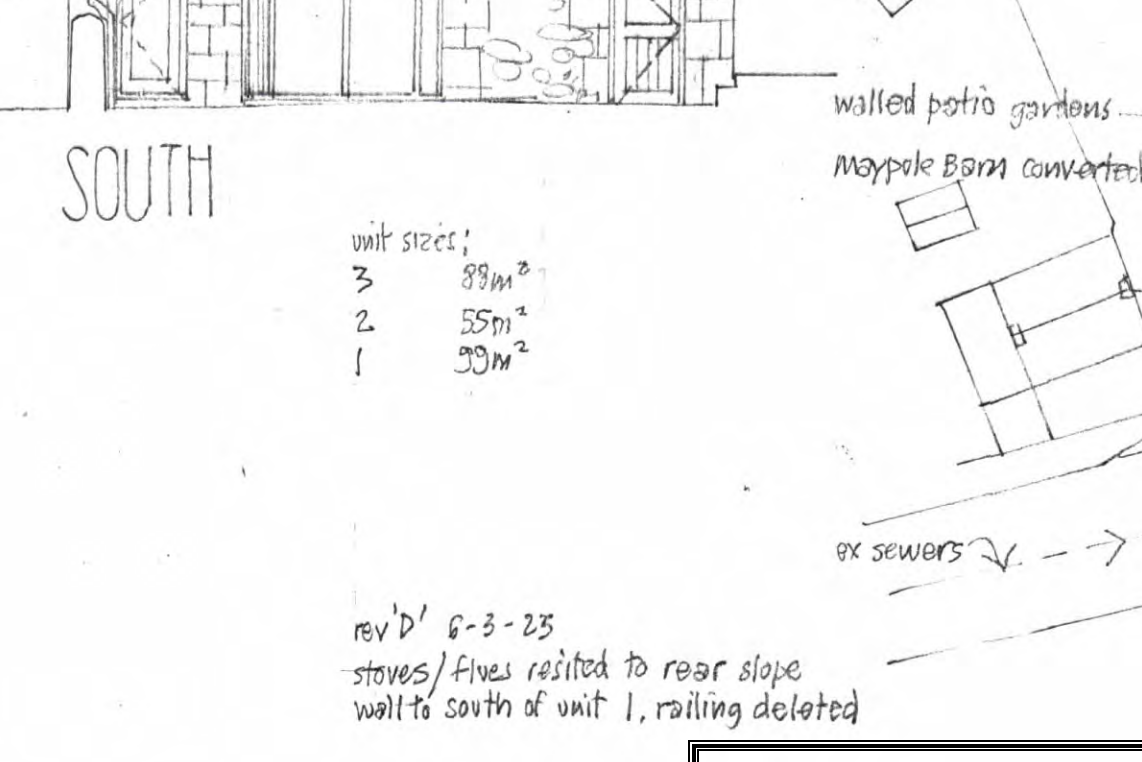
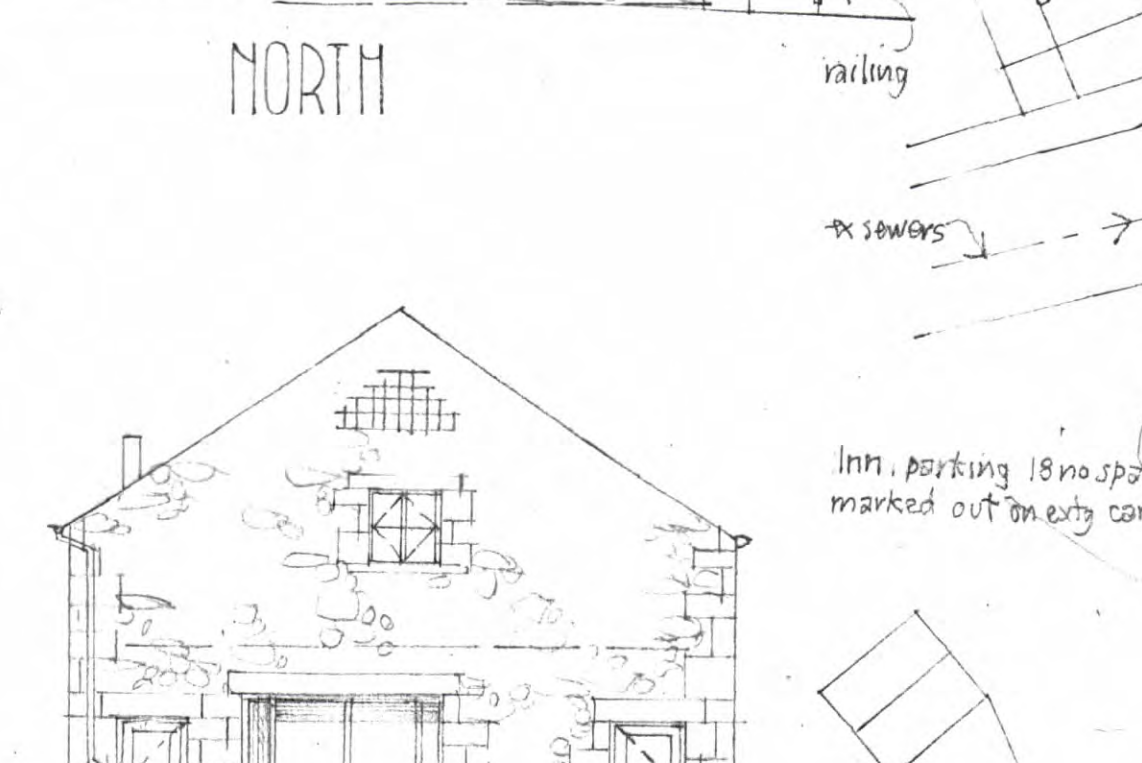
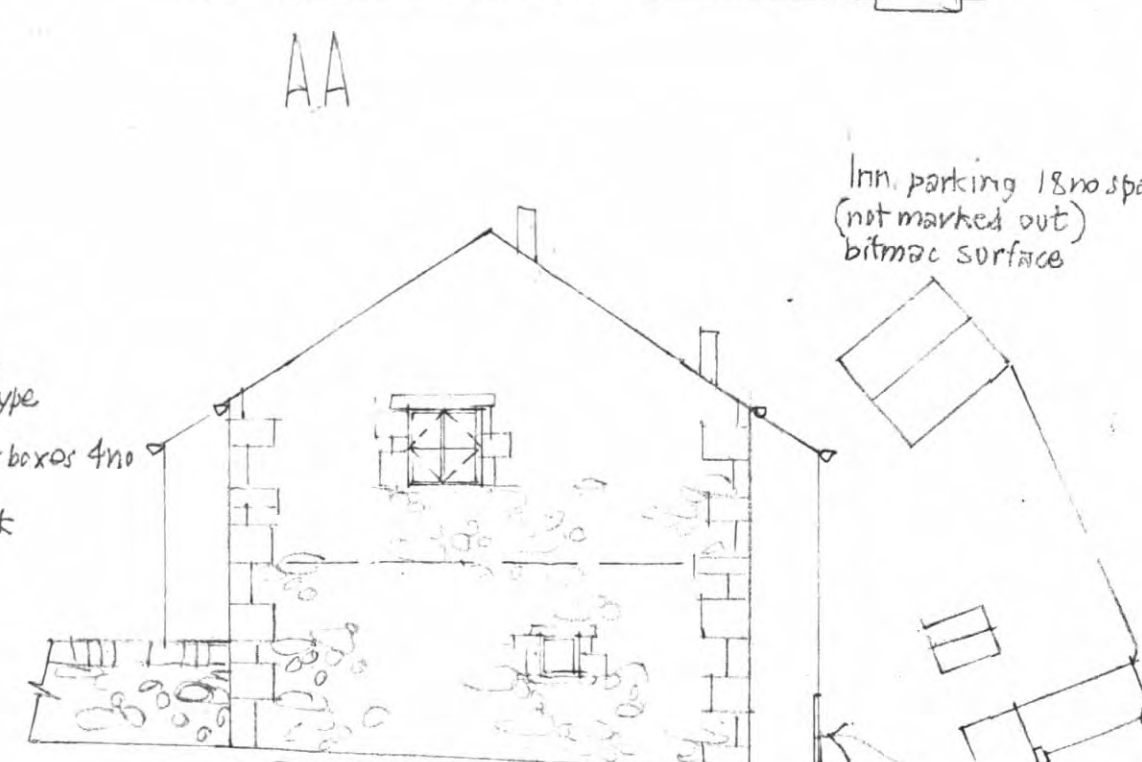
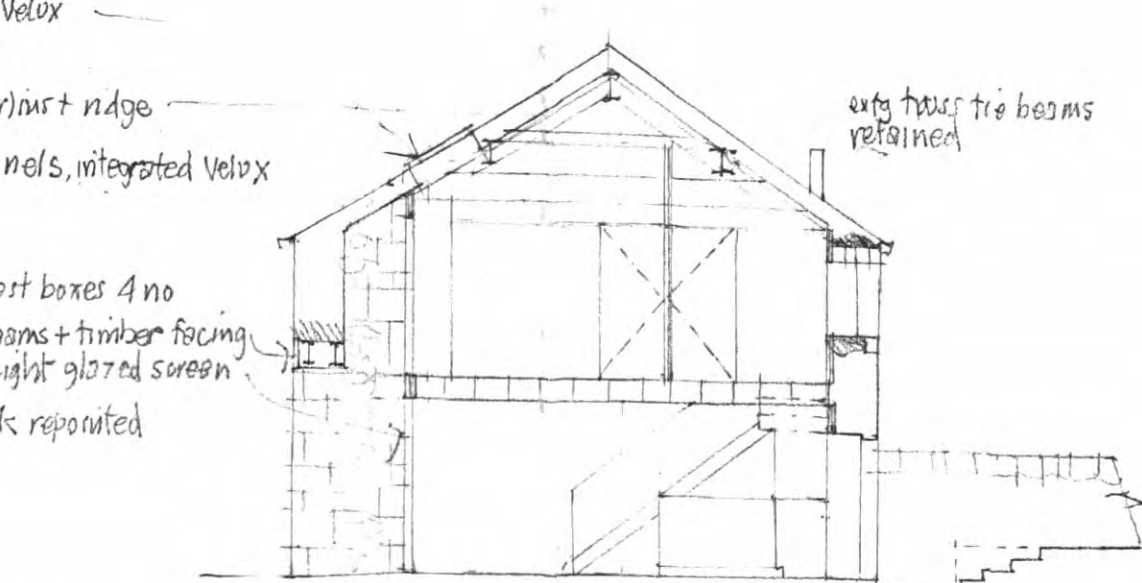
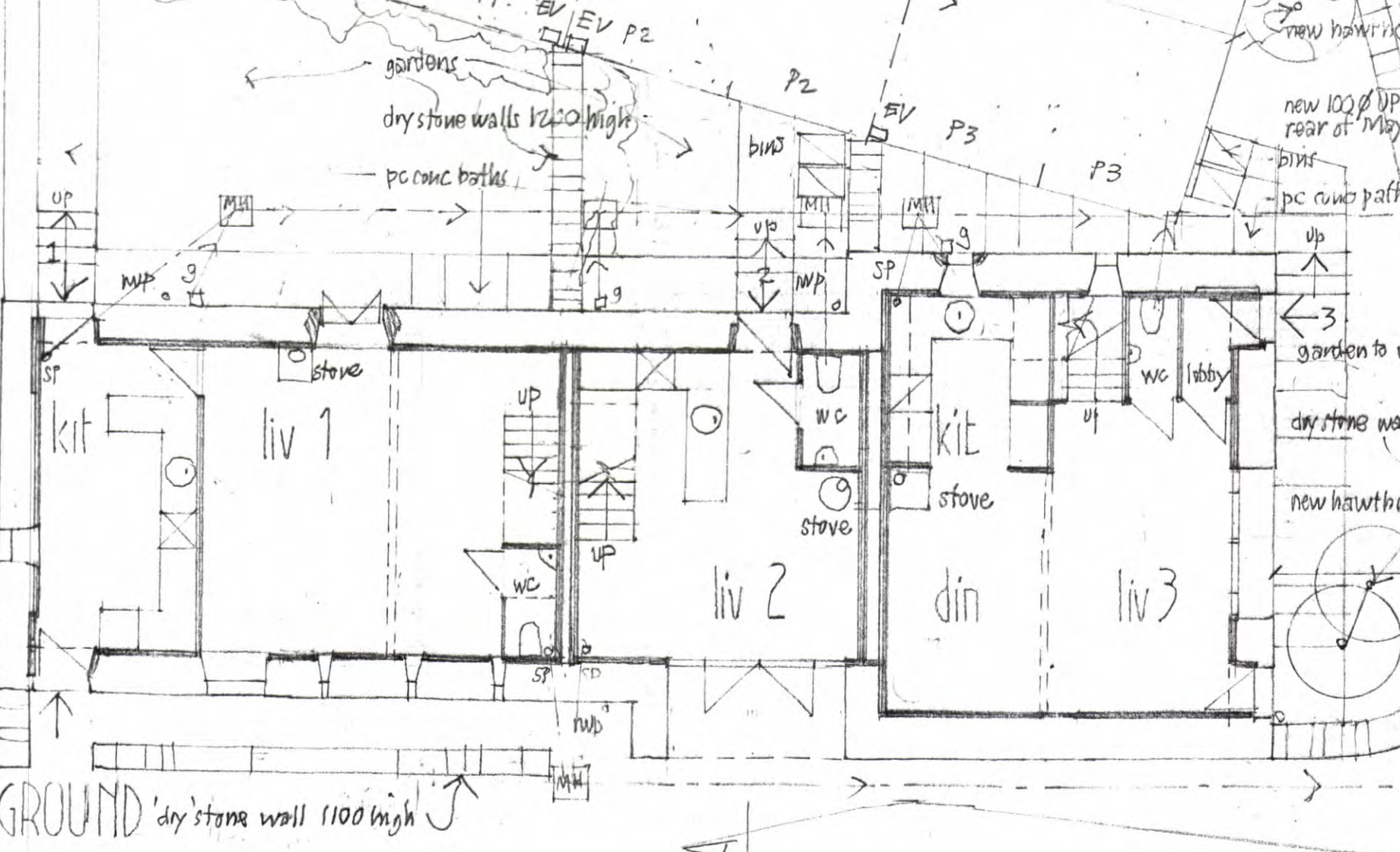
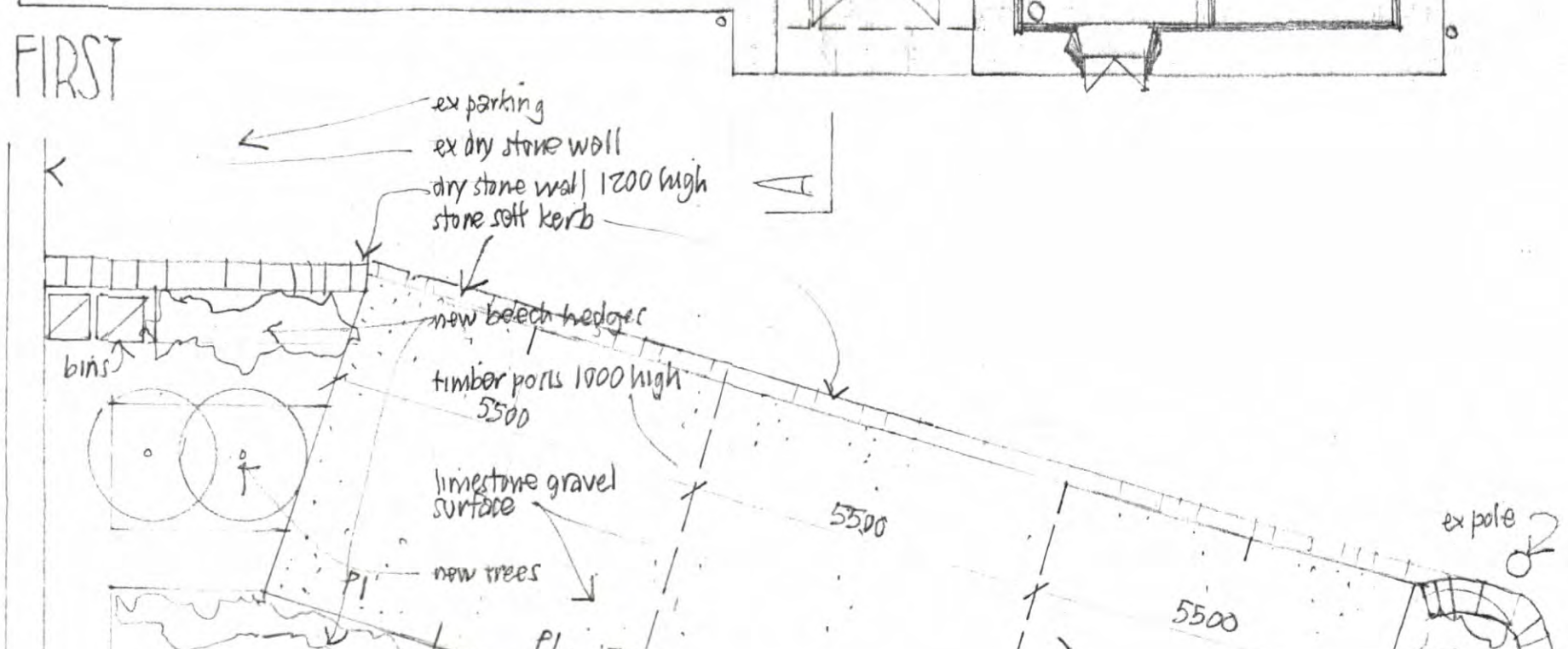
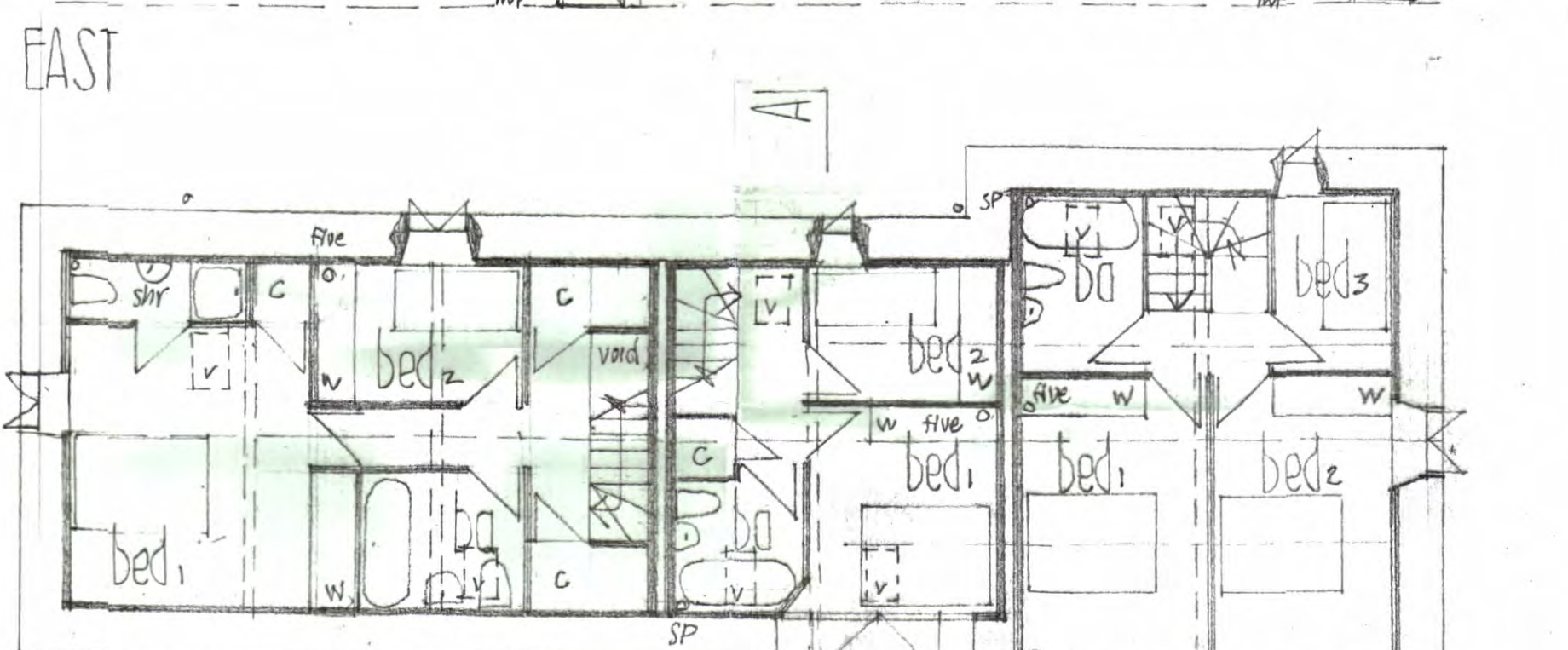
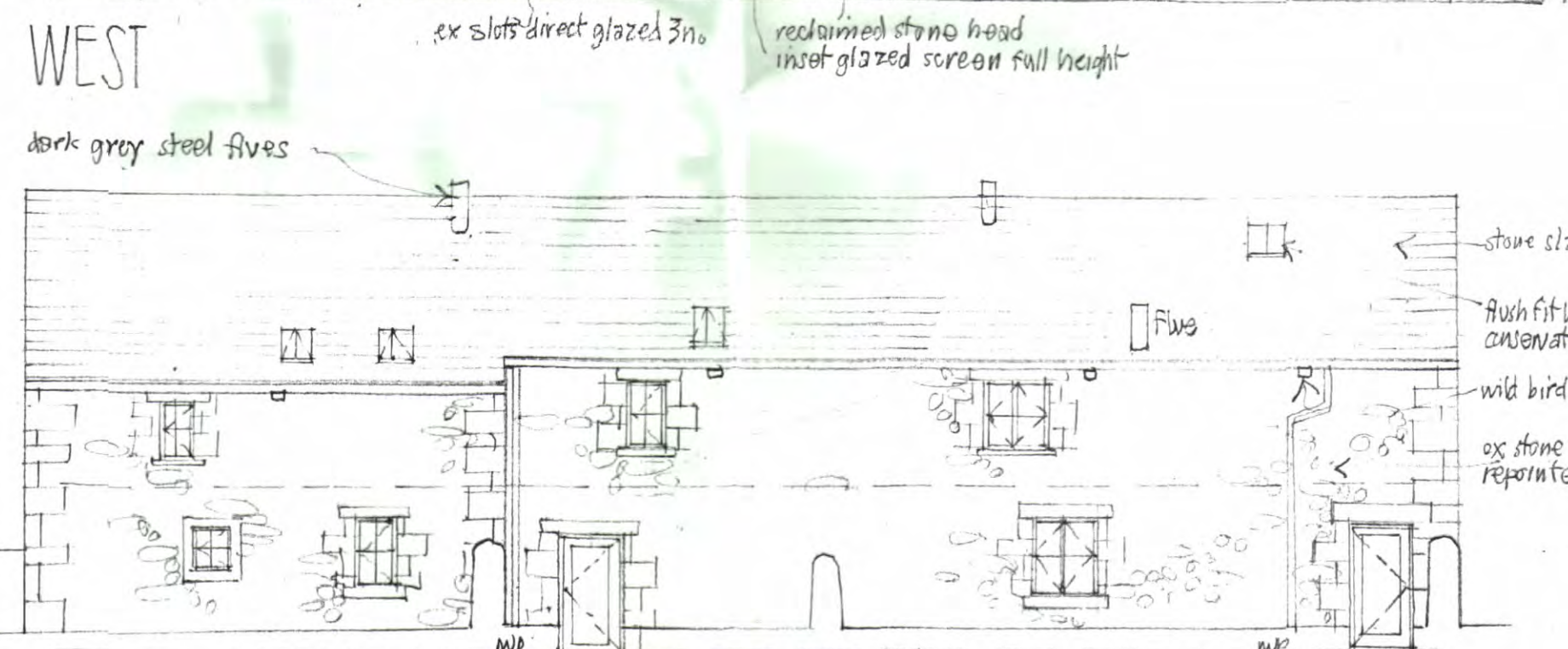
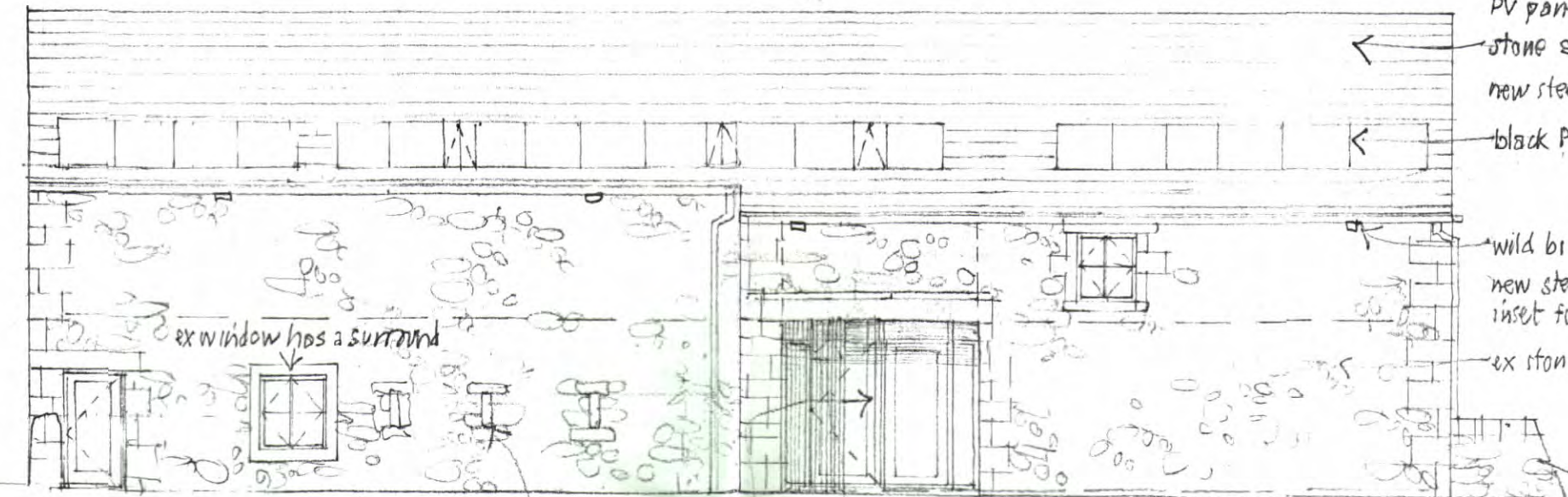


EXISTING



PROPOSED



rev'd 6-3-25
stoves / fires resized to rear slope
wall to south of unit 1, railing deleted



CONVERSION
MAYPOLE BARN LONG PRESTON
Scale 1:100 July 2022

AMENDED



JOHN & JENNIFER WHARTON : ARCHITECT DESIGNERS
Craven House
Brook View
Caxleton
Skipton
North Yorkshire BD23 3EX tel 01756 792708

exterior materials :
roof - stone slates
walls - existing stone repointed, settlement cracks repaired
windows + doors - painted timber, grey/beige
no goods - black oxide alum troughing, black PVC mp's

landscaping - dry stone walls 1200 high
5m hawthorn, crataegus monogyna 3.0m standards
feathered, stake + tie to each tree
beech hedges inside garden walls 3 rows pot grown plants
400 ccs, staggered
grass turf to gardens
precast concrete paving

rev'A' 28-11-22 scheme reduced to 3 no units, plans
elevation + section fully revised
rev'S' 15-12-22 unit 1 bed 1 velux moved to rear
unit 3 liv west window removed
rev'D' 27-1-23 access width off the Maypole increased to 5500
parking layout amended to 2 no cars per house

30551