



16 Hill Lane, Ruislip

Ruislip

£435,000



LAWRENCE RAND

16 Hill Lane

Ruislip, Ruislip

Council Tax band: C

Tenure: Leasehold

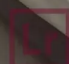
EPC Energy Efficiency Rating: D

EPC Environmental Impact Rating: E

- Stunning Ground Floor Maisonette
- Two Double Bedrooms
- Lovely Modern Kitchen
- Modern Bathroom
- Utility Area
- Private Rear Garden
- Long Lease
- Access to Station
- Close to Schools & Shops





 LAWRENCE RAND



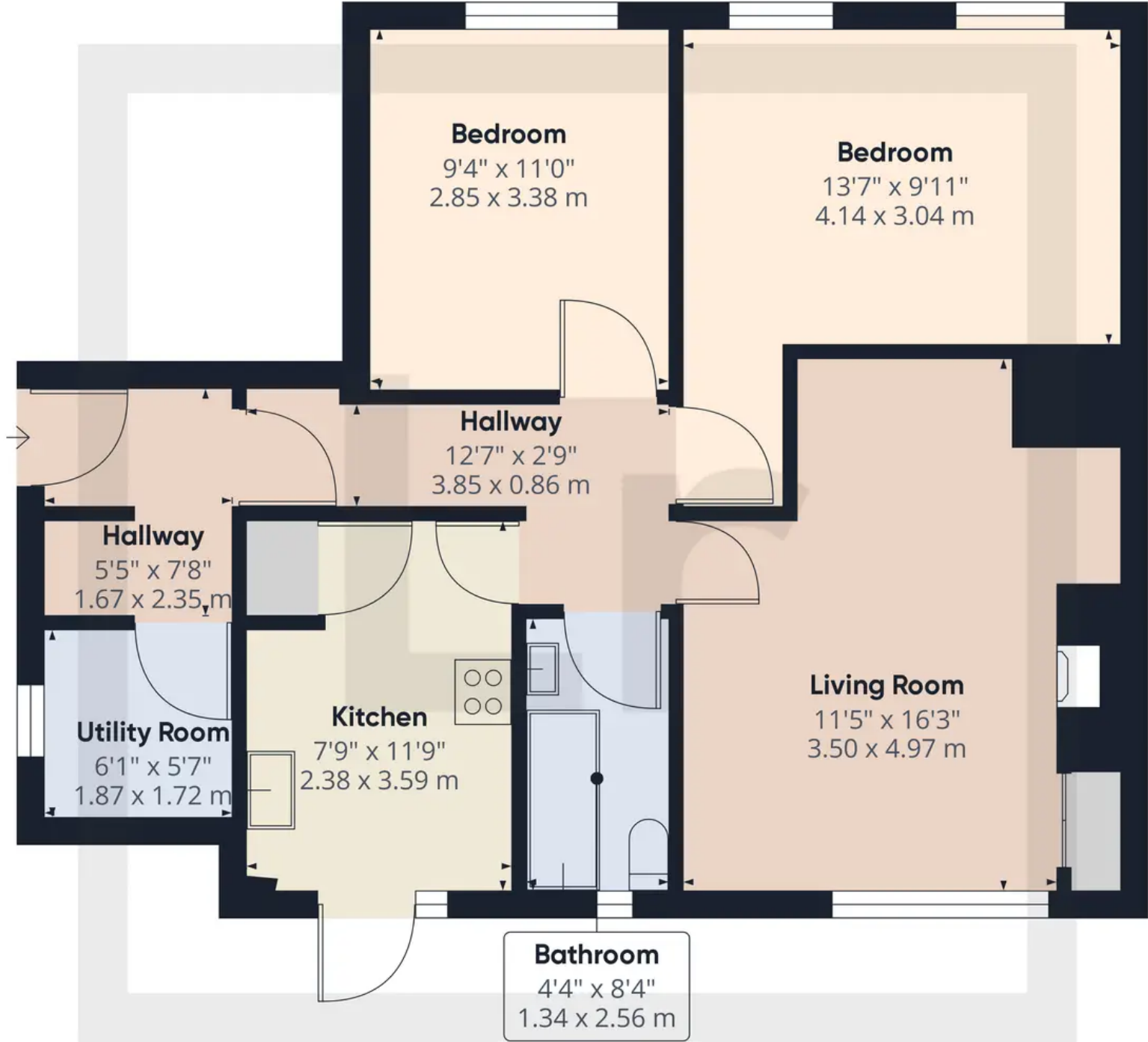
 LAWRENCE RAND



 LAWRENCE RAND



 LAWRENCE RAND



Approximate total area⁽¹⁾
701.42 ft²
65.16 m²

(1) Excluding balconies and terraces

While every attempt has been made to ensure accuracy, all measurements are approximate, not to scale. This floor plan is for illustrative purposes only.



Lawrence Rand

Lawrence Rand, 106 Victoria Road - HA4 0AL

01895 632211

Info@lawrence-rand.co.uk

www.lawrence-rand.co.uk/



LAWRENCE RAND