



9 Nelson Walk, Epsom
Epsom

Guide Price **£875,000**



9 Nelson Walk

Epsom, Epsom

Stunning 4-bed detached house in sought-after Clarendon Park development. Bright kitchen diner, versatile family room, principle bedroom incl. en-suite bathroom and dressing room, 3 more bedrooms, family bath. Sunny garden and patio, integral garage, off-street parking. Book an early viewing!

Council Tax band: D

Tenure: Freehold

EPC Energy Efficiency Rating: D

EPC Environmental Impact Rating: D

- Detached Family House
- Four Bedrooms
- Principle Bedroom with Ensuite & Dressing Room
- Bright Kitchen Diner
- Family Room
- Sunny Garden
- Garage
- Offstreet Parking
- Popular Clarendon Park development



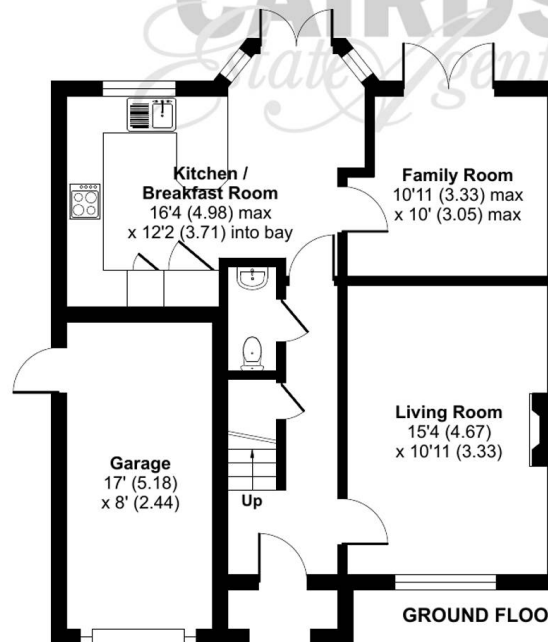
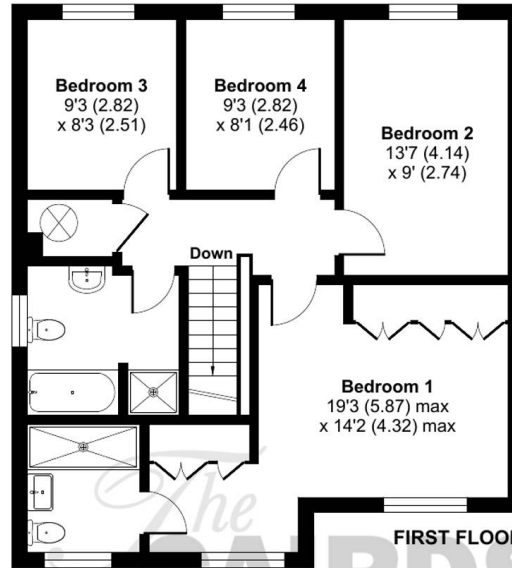
Nelson Walk, Epsom, KT19

Approximate Area = 1308 sq ft / 121.5 sq m

Garage = 135 sq ft / 12.5 sq m

Total = 1443 sq ft / 134 sq m

For identification only - Not to scale



Floor plan produced in accordance with RICS Property Measurement Standards incorporating International Property Measurement Standards (IPMS2 Residential). ©nlchecon 2024. Produced for Cairds. REF: 1067807





Cairds The Estate Agents

Cairds The Estate Agents, 128-130 High Street - KT19 8BT

01372 743033 • homes@cairds.co.uk • www.cairds.co.uk