



15 Briavels Court Downs Hill Road, Epsom
Epsom

Guide Price **£350,000**



15 Briavels Court Downs Hill Road

Epsom, Epsom

2 bed ground floor flat in sought-after development near Epsom town centre. Generous living space, bright reception room, fully equipped kitchen, 2 double bedrooms, shared bathroom. Features warm air heating and designated garage. Close to train station and amenities.

Council Tax band: C

Tenure: Leasehold

EPC Energy Efficiency Rating: D

EPC Environmental Impact Rating:

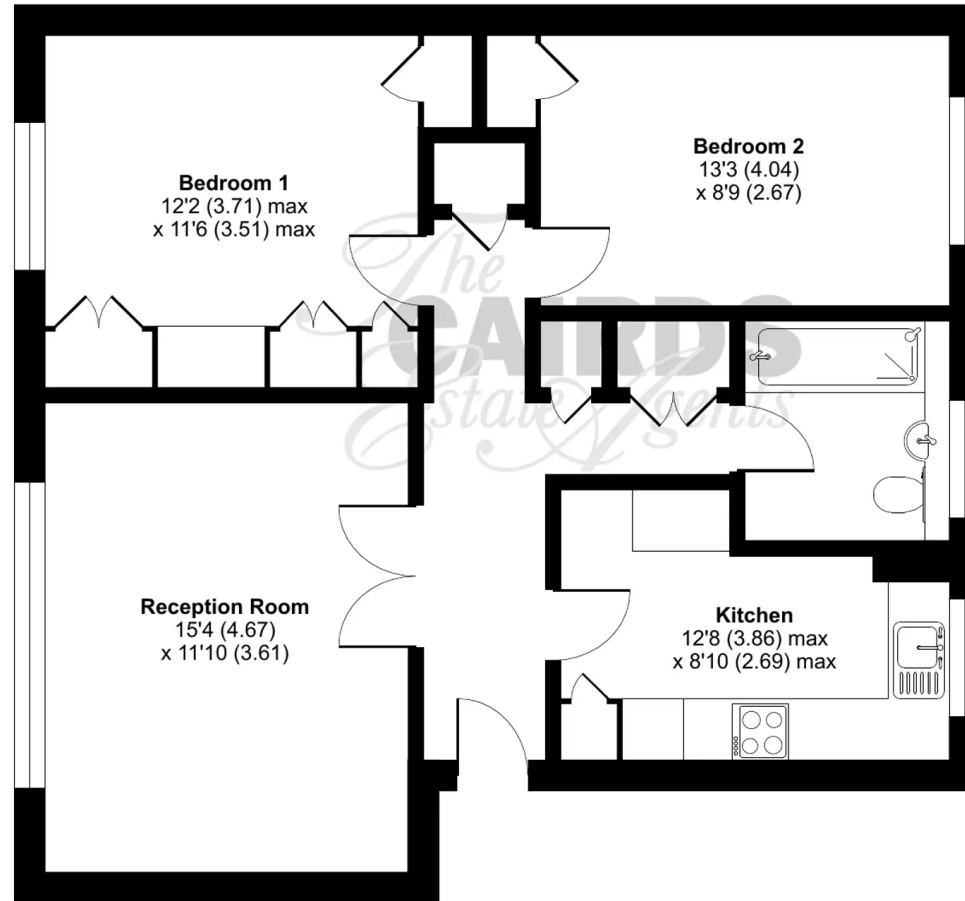
- Ground Floor Flat
- Two Double Bedrooms
- Bright Reception
- Garage No.1
- Warm Air Heating Source
- Close to Town Centre, Excellent Schools



Downs Hill Road, Epsom, KT18

Approximate Area = 741 sq ft / 68.8 sq m

For identification only - Not to scale



GROUND FLOOR



Floor plan produced in accordance with RICS Property Measurement Standards incorporating International Property Measurement Standards (IPMS2 Residential). © nlcheom 2024. Produced for Cairds - REF: 1074611





Cairds The Estate Agents

Cairds The Estate Agents, 128-130 High Street - KT19 8BT

01372 743033 • homes@cairds.co.uk • www.cairds.co.uk