



**10 Claremount Gardens, Epsom**  
Epsom

Guide Price **£1,200,000**



## 10 Claremount Gardens

Epsom, Epsom

Exceptional 4 bed detached house in sought-after Tattenham Corner. Inviting entrance hall, 3 reception rooms, sunny kitchen, 4 double beds, 2 ensuites, sunny rear garden, driveway, close to schools & amenities. Ideal family living. Call Cairds for an early viewing.

Council Tax band: G

Tenure: Freehold

EPC Energy Efficiency Rating: D

EPC Environmental Impact Rating: D

- Detached Four Bedroom House
- Attached Garage & Utility
- Separate Dining
- Three Bathrooms, Two Ensuite
- Porch & Entrance Hall
- Tattenham Corner location
- Driveway for Two Cars
- Close to Schools, Superstore, Station
- Very Sunny Garden
- Paved Patio for Outdoor Entertaining



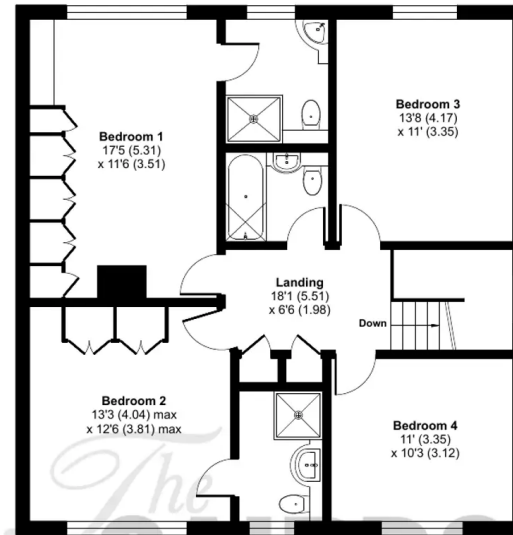
# Claremount Gardens, KT18

Approximate Area = 1861 sq ft / 172.9 sq m

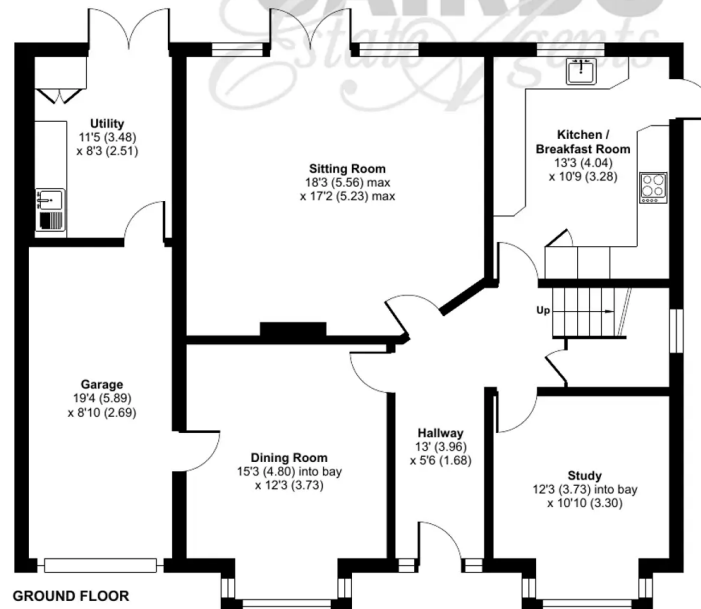
Garage = 272 sq ft / 25.3 sq m

Total = 2133 sq ft / 198.2 sq m

For identification only - Not to scale



FIRST FLOOR



GROUND FLOOR







## Cairds The Estate Agents

Cairds The Estate Agents, 128-130 High Street - KT19 8BT

01372 743033 • [homes@cairds.co.uk](mailto:homes@cairds.co.uk) • [www.cairds.co.uk](http://www.cairds.co.uk)