



**34 Cavendish Walk, Epsom**  
Epsom

Offers Over **£700,000**





## 34 Cavendish Walk

Epsom, Epsom

Desirable 4 bed end of terrace town house in sought-after Livingstone Park. Spacious kitchen / dining room, bright lounge, en-suite master, family bathroom, garage, off-street parking, ample storage. Landscaped garden. Close to amenities, schools. Call Cairds to view.

Council Tax band: F

Tenure: Freehold

EPC Energy Efficiency Rating: C

EPC Environmental Impact Rating:

- Four Bedroom Townhouse
- End Of Terrace
- En-Suite To Master
- Landscaped Rear Garden
- Kitchen/Dining Room
- Garage & Off Street Parking
- Storage
- Walk to The Horton & David Lloyd
- Sought-after Livingstone Park Estate

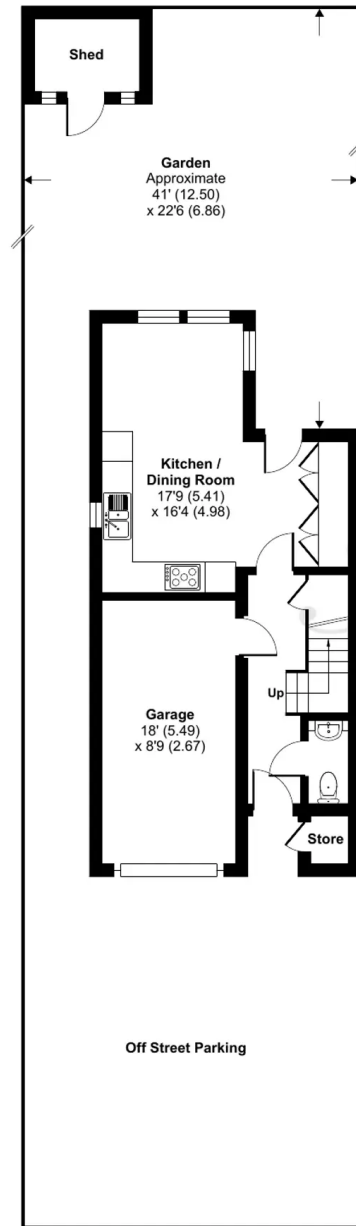
# Cavendish Walk, Epsom, KT19

Approximate Area = 1244 sq ft / 115.5 sq m (excludes shed & store)

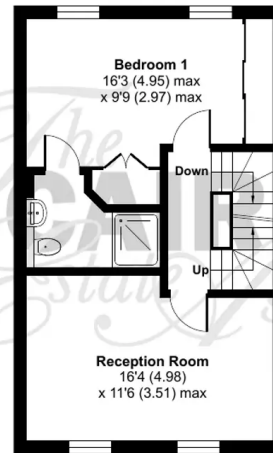
Garage = 155 sq ft / 14.3 sq m

Total = 1399 sq ft / 129.8 sq m

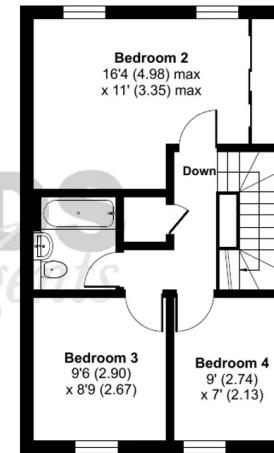
For identification only - Not to scale



GROUND FLOOR



FIRST FLOOR



SECOND FLOOR











## Cairds The Estate Agents

Cairds The Estate Agents, 128-130 High Street - KT19 8BT

01372 743033 • homes@cairds.co.uk • www.cairds.co.uk