



Victoria Road, Ruislip

£425,000

Ruislip

 **LAWRENCE RAND**

Victoria Road

, Ruislip

A modern two bedroom house which is stylishly presented throughout offering contemporary living.

Council Tax band: D

- Two bedroom house
- Excellent condition
- Ground-floor w/c
- Off street parking
- Rear garden





Lr LAWRENCE RAND



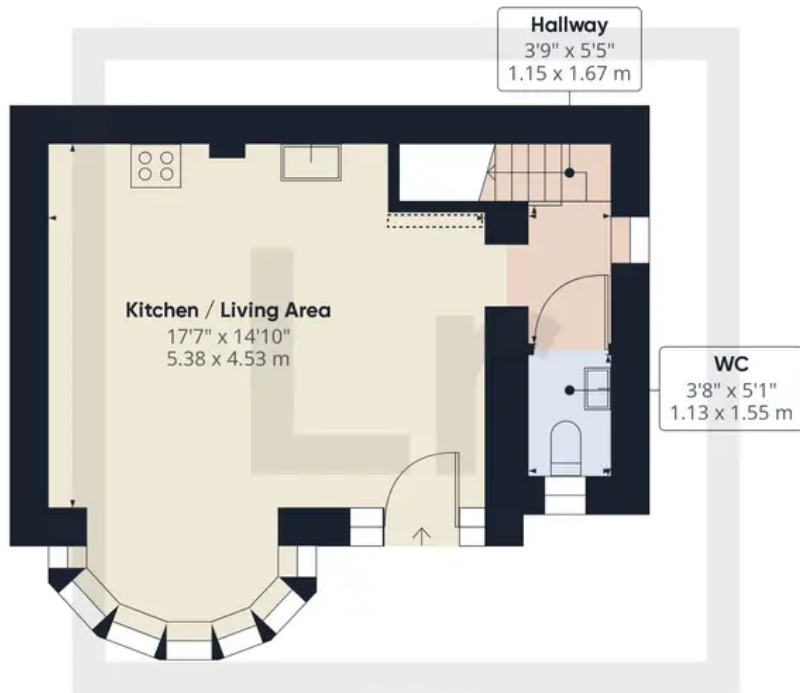
Lr LAWRENCE RAND



Lr LAWRENCE RAND



Lr LAWRENCE RAND

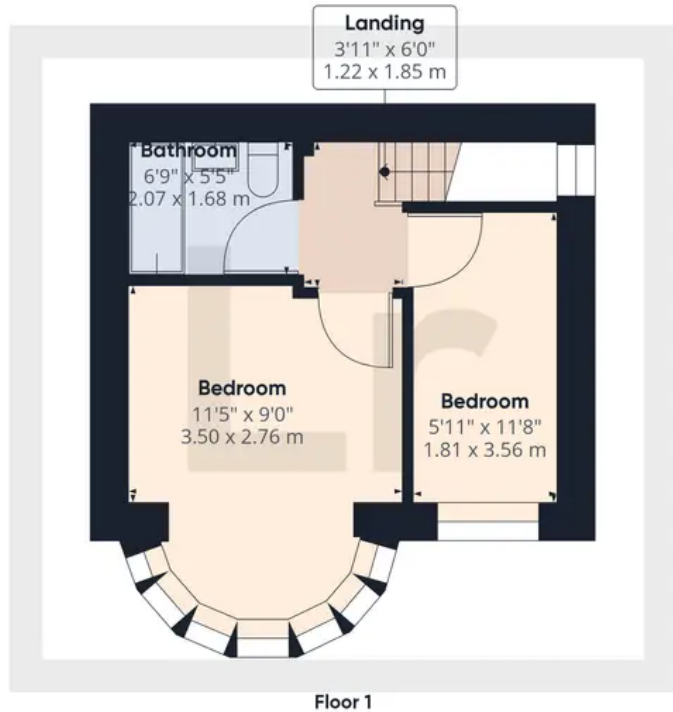


Approximate total area⁽¹⁾

625.52 ft²
58.11 m²

Reduced headroom

2 ft²
0.19 m²



(1) Excluding balconies and terraces

⊞ Reduced headroom
(below 1.5m/4.92ft)

While every attempt has been made to ensure accuracy, all measurements are approximate, not to scale. This floor plan is for illustrative purposes only.



Lawrence Rand

Lawrence Rand, 106 Victoria Road - HA4 0AL

01895 632211

Info@lawrence-rand.co.uk

www.lawrence-rand.co.uk/

