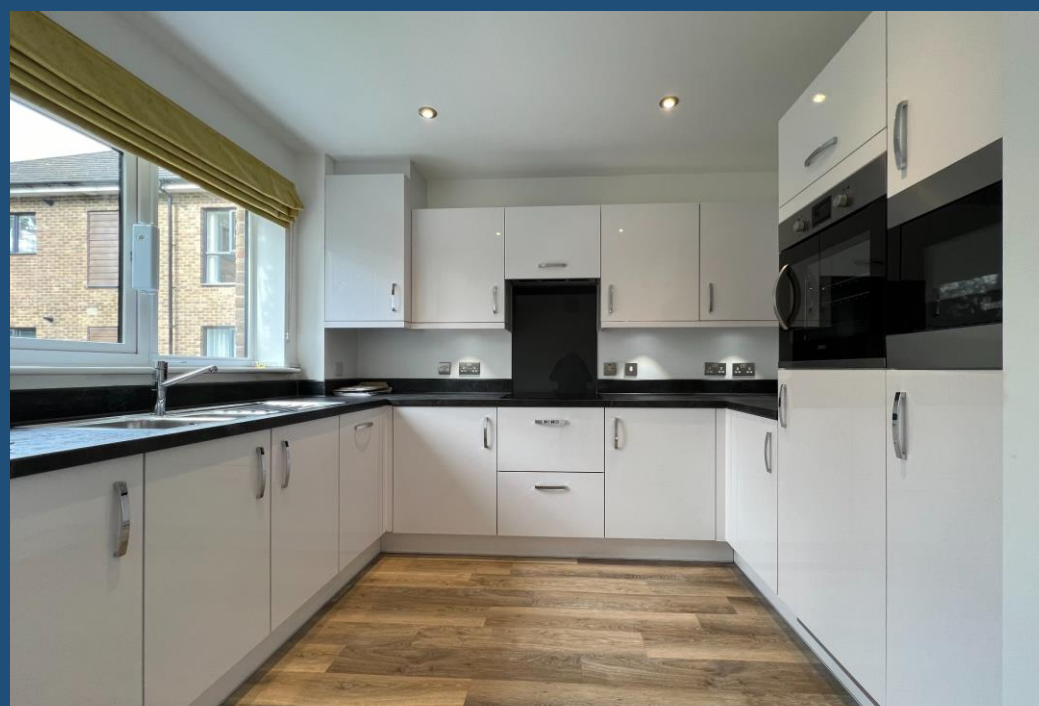




**£250,000**  
Leasehold

**38 Meadow Court, Hamilton Road**  
Sarisbury Green, Southampton, Hampshire SO31 7PU



## Quick View

|   |                     |   |                    |
|---|---------------------|---|--------------------|
|  | 1 Bedroom           |  | None               |
|  | 1 Living Room       |  | 1 Bathroom         |
|  | Retirement Property |  | EPC Rating B       |
|  | None                |  | Council Tax Band C |

## Reasons to View

- Sleek white gloss kitchen with a high specification, fully fitted units with integrated appliances.
- Enjoying a corner position the living room here is dual aspect with a large south/west facing balcony overlooking woodland.
- With an open plan living and dining space, you can comfortably entertain friends and family, or simply relax in your own spacious environment.
- The sizeable bedroom has an en-suite, walk in shower and ample fitted wardrobe space.
- There are beautifully landscaped gardens which you can enjoy without the hassle of maintaining them.
- Specifically for the over 55's Meadow Court is an independent living development and has its own dedicated care and support team based on-site if your needs require.

## Description

Meadow Court is a place where you can make the most of life, surrounded by luxury and safe in the knowledge that your beautiful new home will always be maintained to the highest possible standards, with all the support you could ever need waiting on your doorstep.

With an onsite hair salon, you don't have to go far to enjoy an afternoon of pampering. There is also a café serving delicious meals so if you don't feel like cooking you can see what's on the daily menu.

This first floor apartment embraces plenty of natural light and benefits from a dual aspect living room and large balcony with views into the adjacent woodland.

It's open plan to the kitchen which has fully integrated appliances including oven, microwave, hob, fridge, freezer and a even a dishwasher. There is also a useful separate utility area located in the hallway with storage and washing machine.

The generous bedroom has built in wardrobes and a spacious fully tiled ensuite with walk in shower.

Pets are part of the family, and we know you'd never be able to leave them behind when moving. So, if that's holding you back from your new luxury independent living apartment, worry not for household animals are welcome!

## Other Information

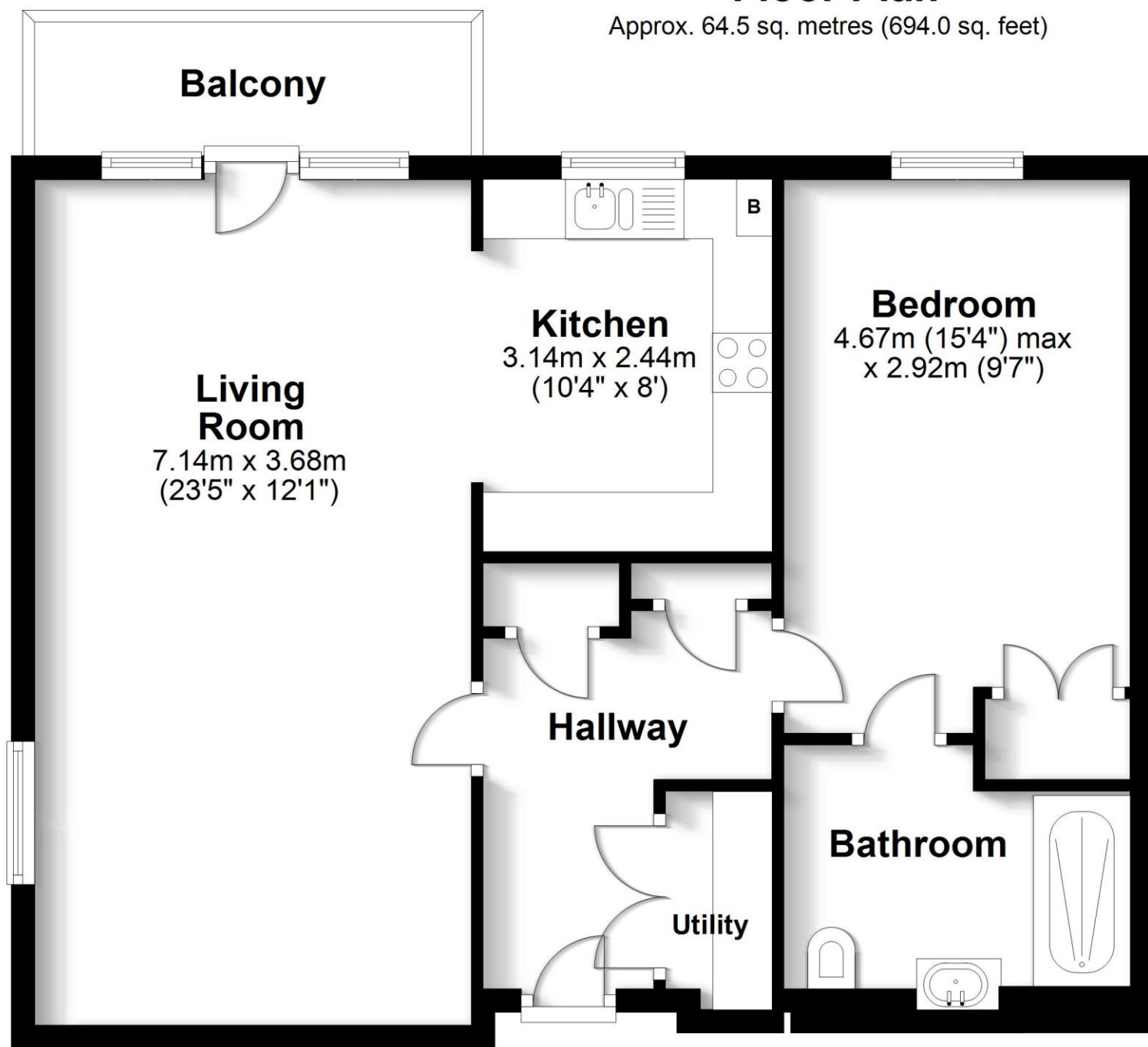
This is a leasehold property for the over 55's only. The 125 year lease commenced 1 December 2018. The service charge is currently £455.71 per month. Upon resale there is an admin fee payable of £660 and a contribution of 3% of the sale price towards the sinking fund.

## Directions

<https://what3words.com/swooning.burden.blushes>

## Floor Plan

Approx. 64.5 sq. metres (694.0 sq. feet)



Total area: approx. 64.5 sq. metres (694.0 sq. feet)

Robinson Reade endeavour to supply accurate and reliable property information in line with Consumer Protection from Unfair Trading Regulations 2008, however please contact the office before viewing if there is any aspect which is particularly important to you and we will be pleased to provide the relevant information. These property details do not constitute any part of an offer or contract, all measurements are approximate. Any services, appliances and heating systems listed have not been checked. We must point out that where we introduce you to a third party who offers conveyancing, removal or financial services, e.g. legal, mortgage and insurance advice, we may earn a commission. For more information go to [www.robinsonreade.co.uk/referral-fees](http://www.robinsonreade.co.uk/referral-fees). Robinson Reade Ltd, Registered office: 10 Middle Road, Park Gate, Southampton, SO31 7GH, Co Reg No: 5185152



Pop in to see us at 10 Middle Road, Park Gate, Southampton, Hampshire, SO31 7GH  
Email us [sales@robinsonreade.co.uk](mailto:sales@robinsonreade.co.uk) Visit us [www.robinsonreade.co.uk](http://www.robinsonreade.co.uk)  
Call us on 01489 579009

Independent Sales & Letting Agents for the Strawberry Coast