



17 Hendons Way, Holyport, Maidenhead, Berkshire, SL6 2LF

17 HENDONS WAY, HOLYPORT MAIDENHEAD, BERKSHIRE SL6 2LF

GUIDE PRICE £785,000 FREEHOLD

An immaculately presented, refurbished four double bedroom detached chalet-style bungalow offering modern spacious living accommodation throughout. The property features a generous living room, extended kitchen/dining room, two bath/shower rooms, a generous rear garden, driveway parking and a detached garage. The property also offers great potential for extension, subject to the necessary planning consents being obtained. Situated within easy reach of popular schools, shops and amenities and conveniently located for access to Maidenhead railway station (Elizabeth Line), the M4 motorway and London Heathrow Airport.

*LARGE LIVING ROOM *KITCHEN/DINING ROOM
*SHOWER ROOM *FOUR DOUBLE BEDROOMS
*FAMILY BATHROOM *GENEROUS GARDEN
*DRIVEWAY PARKING *DETACHED GARAGE
*CLOSE TO LOCAL SCHOOLING
*SCOPE FOR EXTENSION (STPP) *EPC RATING D
*COUNCIL TAX BAND F





Approximate Cross Internal Area
 Ground Floor = 80.2 sq m / 863 sq ft
 First Floor = 58.6 sq m / 631 sq ft
 Garage = 16.8 sq m / 181 sq ft
 Total = 155.6 sq m / 1,675 sq ft



= Reduced headroom below 1.5m / 5'0"

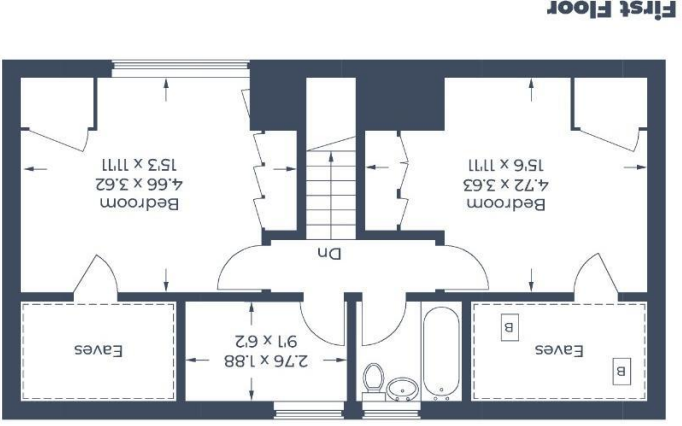
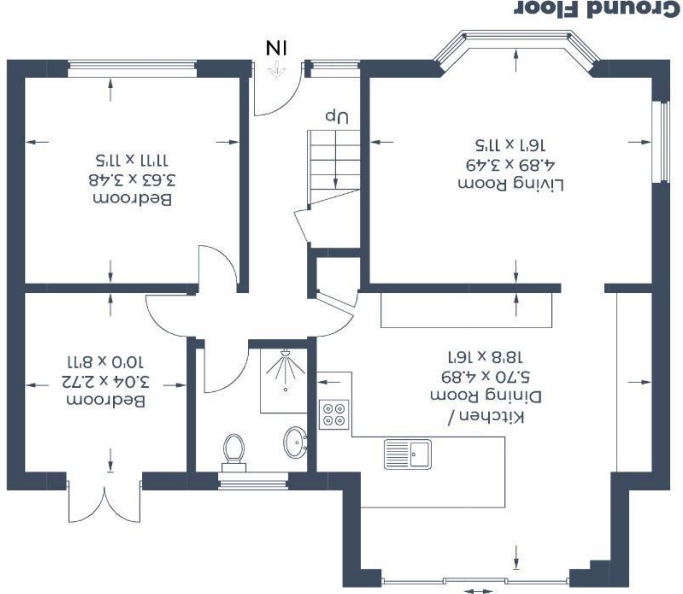


Illustration for identification purposes only, measurements are approximate, not to scale.
 © CJ Property Marketing Produced for Braxton

39-41 High Street, Maidenhead, Berkshire SL6 1JF
 Tel: 01628 674234 Fax: 01628 785432
 Email: property@braxtons.co.uk
braxtons.co.uk

Residential Sales | Land & New Homes | Properties to Let | Landlords, Lettings and Management Services

