



Apartment 8 Gladys House
Goodson Mews
Thame OX9 3BX

To Let
£1025 PCM

RB REASTON BROWN

Converted, Ground Floor Studio Apartment Within Easy Walking Distance of The Town Centre.

Gladys House is a distinct and luxury collection of Twelve 1 and 2 bedrooms and studio apartments situated in the heart of Oxfordshire at the foot of the Chiltern Hills in the idyllic town of Thame. Hand crafted and expertly designed with modern day living in mind; these properties have a carefully considered range of design features with quality and excellence at the core.

Number 8 is a ground floor studio which bursts with style and sophistication boasting grey luxury laminate flooring with underfloor heating throughout. The properties have individually designed contemporary kitchens. Matching wall and base units with two-toned doors with separate shelving units, integrated Bosch appliances including cooker, induction hob, fridge with freezer compartment and washer/dryer. Finishing the studio is a beautiful shower room with rainfall shower and luxury sanitary-ware.

The property also benefits from double glazed windows, Openreach connection and a video door entry system. Electric boiler with underfloor heating throughout

EPC = E Council Tax B

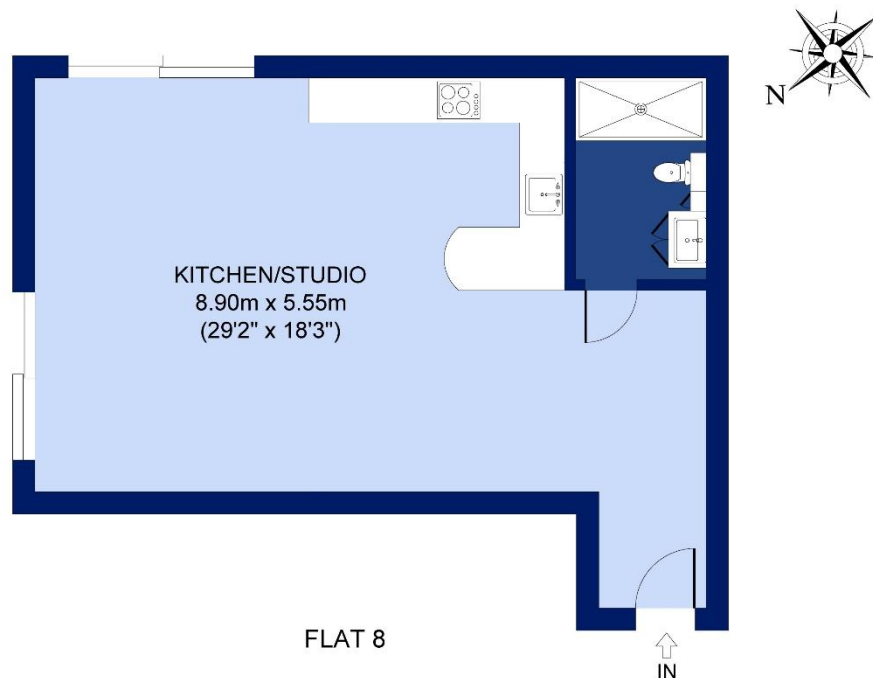
Situation

Thame offers the local community the flexibility to and accessibility, to enjoy their chosen lifestyle whether that is the city life or the countryside lifestyle. The countryside is large part of many residents' lifestyles in and around Thame with the Phoenix route for cyclists, runners, and sport enthusiasts alike. Known for its traditions, Thame holds a weekly trader's market which takes place every Tuesday in the market square and a traditional farmers market takes places on both a Wednesday and Friday, dealing in a wide range of livestock from small heard of sheep to prize winning cattle.

Thame is minutes away from the main Chiltern Line, connecting residents into London Marylebone with a travel time of only 35 minutes and to the midlands. The M40 motorway is also a stone's throw from the market town. There is a regular and reliable local bus service available as well as a national service. The Oxford Tube is a highly used bus service and used by commuters to provide a further direct access into London within an hour. The Gatwick Express provides frequent access to both London Gatwick and London Heathrow.

The property comprises the following with all dimensions being approximate only. Please note that Reaston Brown has not tested appliances or systems and no warranty as to condition or suitability is confirmed or implied. .





APPROX. GROSS INTERNAL FLOOR AREA 562 SQ FT / 52 SQ M
GOODSONS INDUSTRIAL MEWS, WELLINGTON STREET, THAME, OX9 3BX (FLAT 8)

All measurements of walls, doors, windows and fitting and appliances, including their size and location, are shown as standard sizes and therefore cannot be regarded as a representation by the seller.

RB REASTON BROWN



Additional Information

EPC: E

Council Tax: B

Carpark: One Space per Flat

Costs:-Holding Deposit 1 week's rent (calculated as monthly rent x 12 ÷ 52)

Rent in advance = One Months Rent Deposit 5 week's rent (calculated as monthly rent x 12 ÷ 52 x 5)

If you withdraw, provide misleading information on you pre application form or withhold/delay the referencing process you may forfeit your holding deposit

Viewing is Strictly by Appointment through Reaston Brown



www.reastonbrown.co.uk Email: **sales@reastonbrown.co.uk**

94 High Street . Thame . Oxfordshire . OX9 3EH Tel: +44(0) 1844 260626

2-4 Windmill Road, Headington, Oxford, OX3 7BX Tel : +44(0) 1865 308855

119-121 Park Lane . London . W1K 7AG. Tel : +44(0) 207 079 1589



Sales, Lettings, Commercial & Chartered Surveying

