



35 Beechen Lane, Lower Kingswood
Tadworth

In Excess of **£400,000**



35 Beechen Lane

Lower Kingswood, Tadworth

Charming 2-bed terrace with fireplace & fitted kitchen, ideal for first-time buyers. Good-sized living spaces, garage, & on-street parking. Close to schools & Kingswood Golf Club. Lovely views in Lower Kingswood. Call Cairds for a viewing.

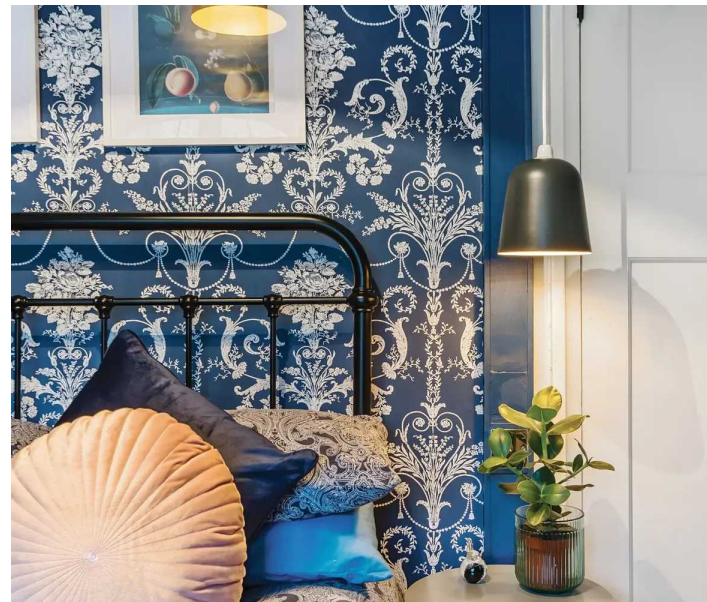
Council Tax band: D

Tenure: Freehold

EPC Energy Efficiency Rating: D

EPC Environmental Impact Rating:

- Two Bedroom Mid-Terrace Home
- In Superb Move-in Order
- Inviting Reception With Fireplace
- Garage & Parking
- Good Sized Rooms
- Terraced Low Maintenance Rear Garden
- Equidistant Between Two Good Primary Schools
- Close to Kingswood Golf Club
- Lovely Views Across Fields



Beechen Lane, Lower Kingswood, Tadworth, KT20

Approximate Area = 636 sq ft / 59.1 sq m

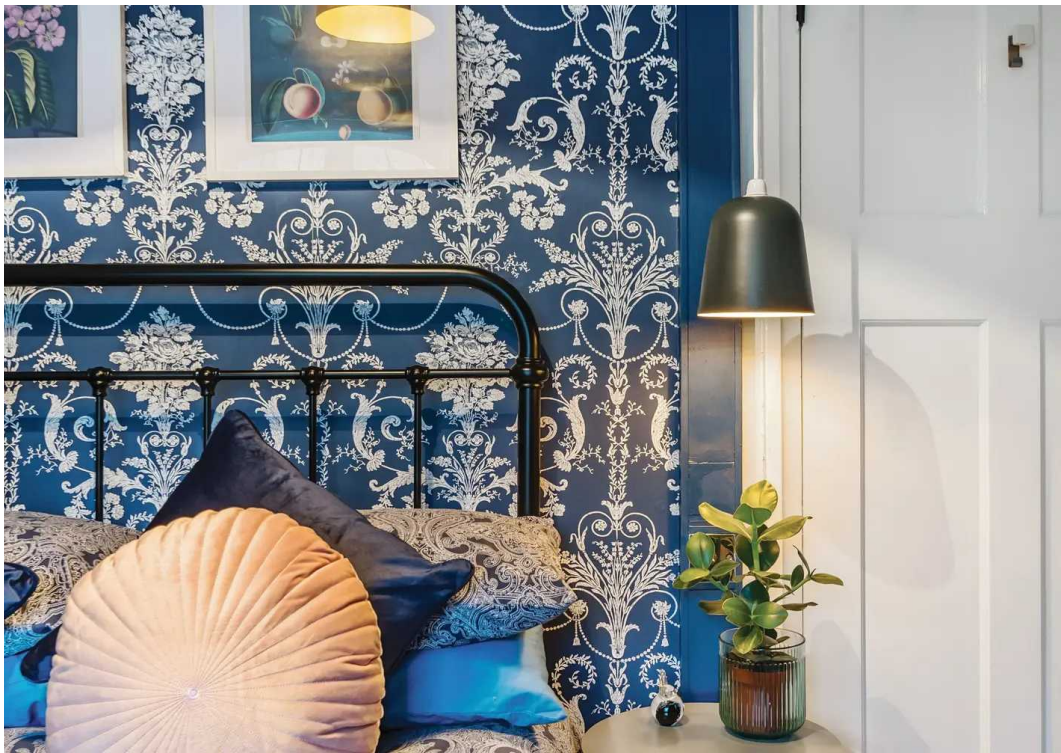
Garage = 180 sq ft / 16.7 sq m

Total = 816 sq ft / 75.8 sq m

For identification only - Not to scale



Floor plan produced in accordance with RICS Property Measurement Standards incorporating International Property Measurement Standards (IPMS2 Residential). © nlcheom 2024. Produced for Cairds - REF: 1093975





Cairds The Estate Agents

Cairds The Estate Agents, 128-130 High Street - KT19 8BT

01372 743033 • homes@cairds.co.uk • www.cairds.co.uk