

FOR SALE



Bretton Close, Brierley
Guide Price £80,000


MARTIN&CO



Bretton Close, Brierley

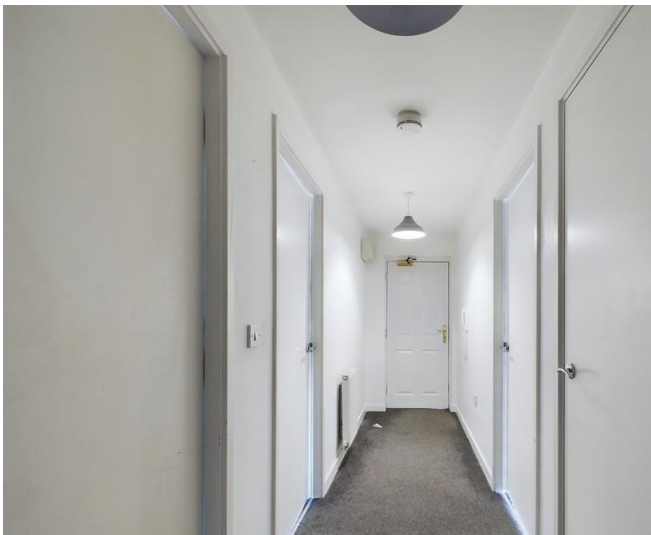
2 Bedrooms, 1 Bathroom

Guide Price £80,000

- Two double bedrooms
- Open plan lounge/dining/kitchen
- Communal gardens
- Allocated parking
- Access to commuter links

GUIDE PRICE £80,000 - £90,000. Introducing Bretton Close, Brierley – A First Floor Apartment.

Nestled within the tranquil neighbourhood of Brierley, this two-bedroom first floor apartment. With allocated parking, access to communal garden areas, and proximity to key commuter links, this property presents an ideal opportunity for those seeking an elevated lifestyle.



As you step inside, you're greeted by a secure communal entrance hall that leads to the stairs taking you to the first floor landing. Upon entering the apartment, an entrance hall welcomes you, complete with a convenient store cupboard for all your storage needs. The heart of the home reveals a spacious lounge and dining area adorned with laminate flooring, providing an inviting space to relax and entertain.

The kitchen area seamlessly integrates modern design with functionality, featuring Beech wall and base units that offer ample storage space. Equipped with an oven, hob, and extractor hood, this kitchen is a haven for culinary enthusiasts. The open layout ensures that meal preparation and socializing go hand in hand.

The apartment boasts two generously proportioned double bedrooms, each designed to provide a peaceful retreat. Natural light filters through the windows, creating a soothing ambiance.

Completing the living experience is the family bathroom, showcasing a white three-piece suite. This space offers a serene sanctuary for relaxation and self-care.

Beyond the apartment itself, residents will appreciate the allocated parking that eliminates any parking-related concerns, and the communal garden areas that provide a serene escape for outdoor enjoyment. Additionally, the property's advantageous location grants easy access to commuter links, ensuring seamless connections to neighbouring towns and cities.

In summary, Bretton Close presents an appealing opportunity to own a modern two-bedroom apartment

in a sought-after location. With its thoughtfully designed living spaces, convenient amenities, and accessibility, this property embodies the essence of comfortable and contemporary living. Don't miss your chance to make this inviting apartment your own and experience the best of both convenience and style.

COMMUNAL ENTRANCE HALL Security communal door opens into the communal entrance hall with stairs to the first floor landing which in turn leads to the apartment door.

APARTMENT ENTRANCE HALL With access to living areas and store cupboard.

BATHROOM Having a white three piece suite which comprises of a low flush w.c, wash hand basin, bath with shower set over and tiling to walls.

LOUNGE/DINING ROOM/KITCHEN Lounge / dining area with laminate flooring and three front facing



windows. Kitchen area with a range of fitted wall and base units in beech effect, wall units include extractor hood, Base units are set beneath worktops which include a single bowl sink, there is a hob, oven, plumbing for washing machine, space for fridge freezer, tiled splash backs.

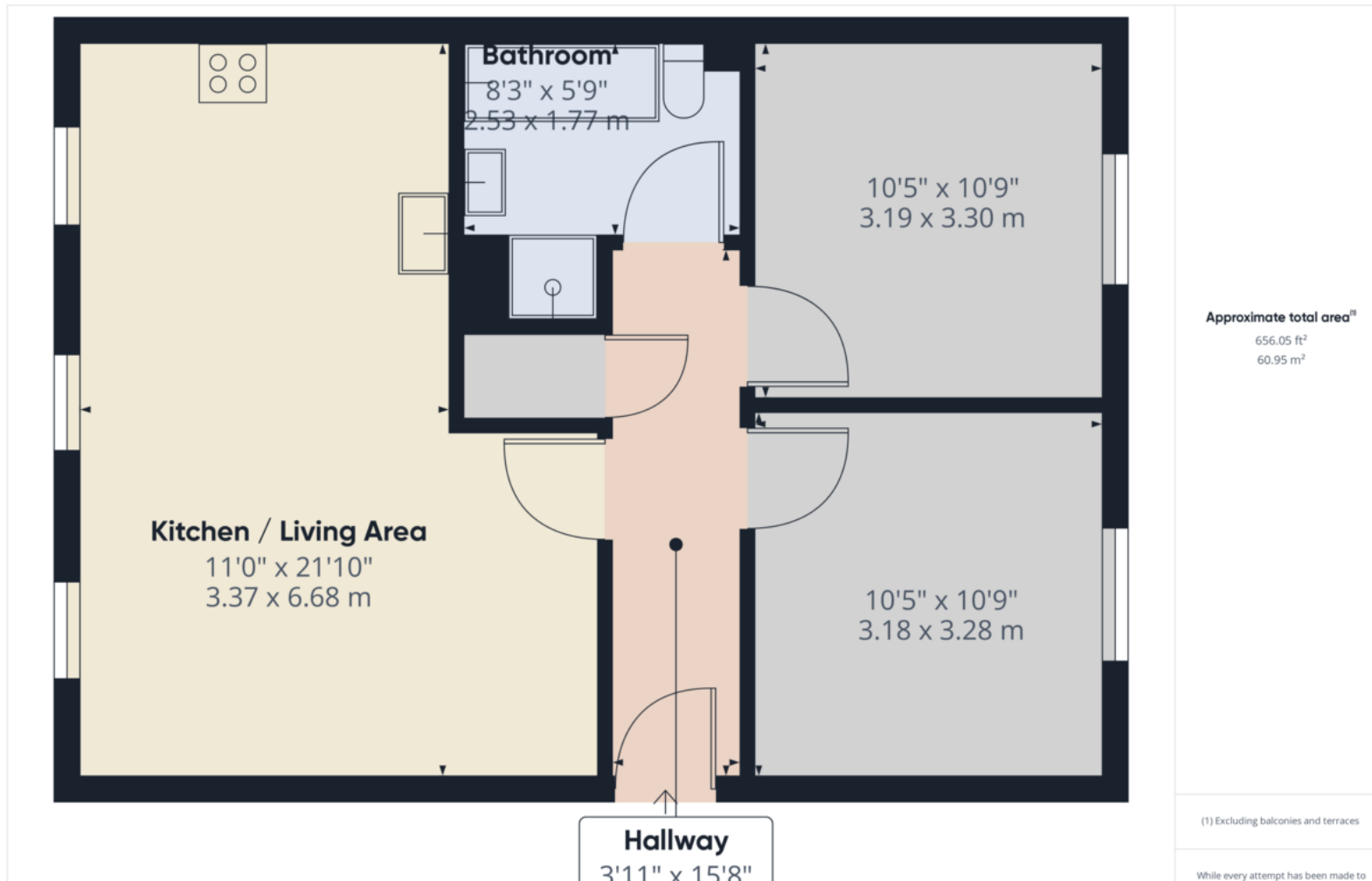
BEDROOM ONE A good size double bedroom with rear facing window.

BEDROOM TWO A good size double bedroom with rear facing window.

OUTSIDE There are communal areas and allocated parking space.







Martin & Co Rotherham

5 Worry Goose Lane • Whiston • Rotherham • S60 4AA
T: 01709 544982 • E: rotherham@martinco.com

01709 544982

<http://www.martinco.com>



Accuracy: References to the Tenure of a Property are based on information supplied by the Seller. The Agent has not had sight of the title documents. A Buyer is advised to obtain verification from their Solicitor. Items shown in photographs including but not limited to carpets, fixtures and fittings are not included unless specifically mentioned within the sales particulars. They may however be available by separate negotiation. Buyers must check the availability of any property and make an appointment to view before embarking on any journey to see a property. No person in the employment of the agent has any authority to make any representation about the property, and accordingly any information given is entirely without responsibility on the part of the agents, sellers(s) or lessors(s). Any property particulars are not an offer or contract, nor form part of one. **Sonic / Laser Tape:** Measurements taken using a sonic / laser tape measure may be subject to a small margin of error. **All Measurements:** All Measurements are Approximate. **Services Not tested:** The Agent has not tested any apparatus, equipment, fixtures and fittings or services and so cannot verify that they are in working order or fit for the purpose. A Buyer is advised to obtain verification from their Solicitor or Surveyor.