

TO LET



Pinstone Street, Sheffield
£1,000 pcm

Pinstone Street, Sheffield

Apartment,
2 bedroom, 1 bathroom

£1,000 pcm

Date available: 8th April 2024

Deposit: £1,153

Furnished

Council Tax band: C

- Full of character
- Two double bedrooms
- Furnished
- Lift access
- Close to Winter Gardens
- Good transport links
-

Located in the heart of Sheffield's Winter Garden area, this stunning 2 double bedroom 1st-floor apartment is a true gem that offers the perfect combination of modern convenience and traditional charm. The apartment comes fully furnished, making it the perfect property for those looking for a move-in ready home. Please ring to enquire on Parking availability.

One of the standout features of this apartment is the character, with high ceilings and large sash windows which add to the overall sense of space and grandeur. This is



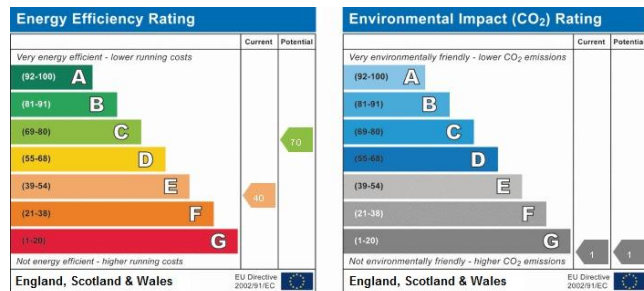
further enhanced by the apartment's open-plan layout, which connects the lounge area with a modern kitchen. The kitchen is fitted with white units and is equipped with a built-in oven, fridge freezer and dishwasher, making it the perfect space for any keen chef to prepare meals for family and friends.

From the hallway, you can access the two bedrooms, the bathroom, and the open-plan living and kitchen area. The hallway also features a utility cupboard with a washing machine/dryer and additional storage space, which is a convenient feature that adds to the practicality of the apartment.

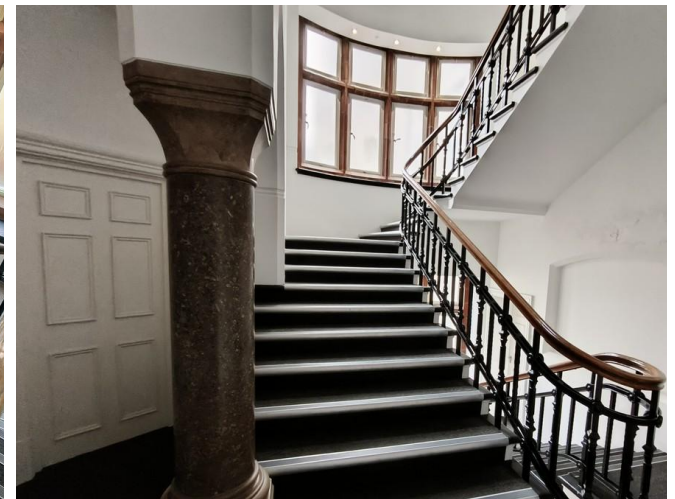
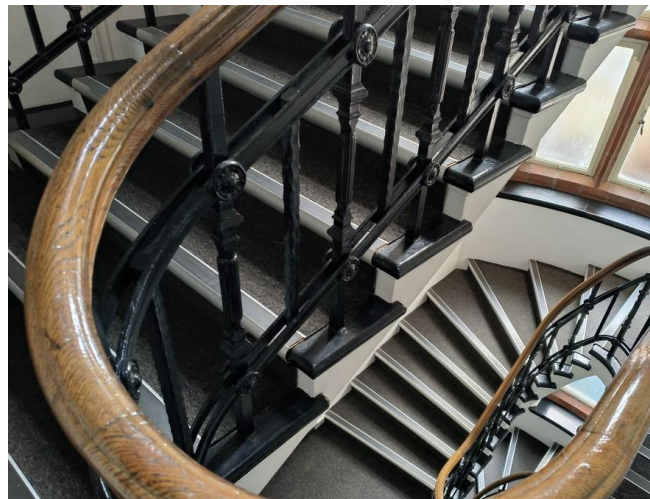
The apartment is located on the first floor and can be accessed via the characterful stairs or one of the oldest working lifts in South Yorkshire. The lift is complete with wooden paneling and leather seats, giving residents a taste of the building's rich history.

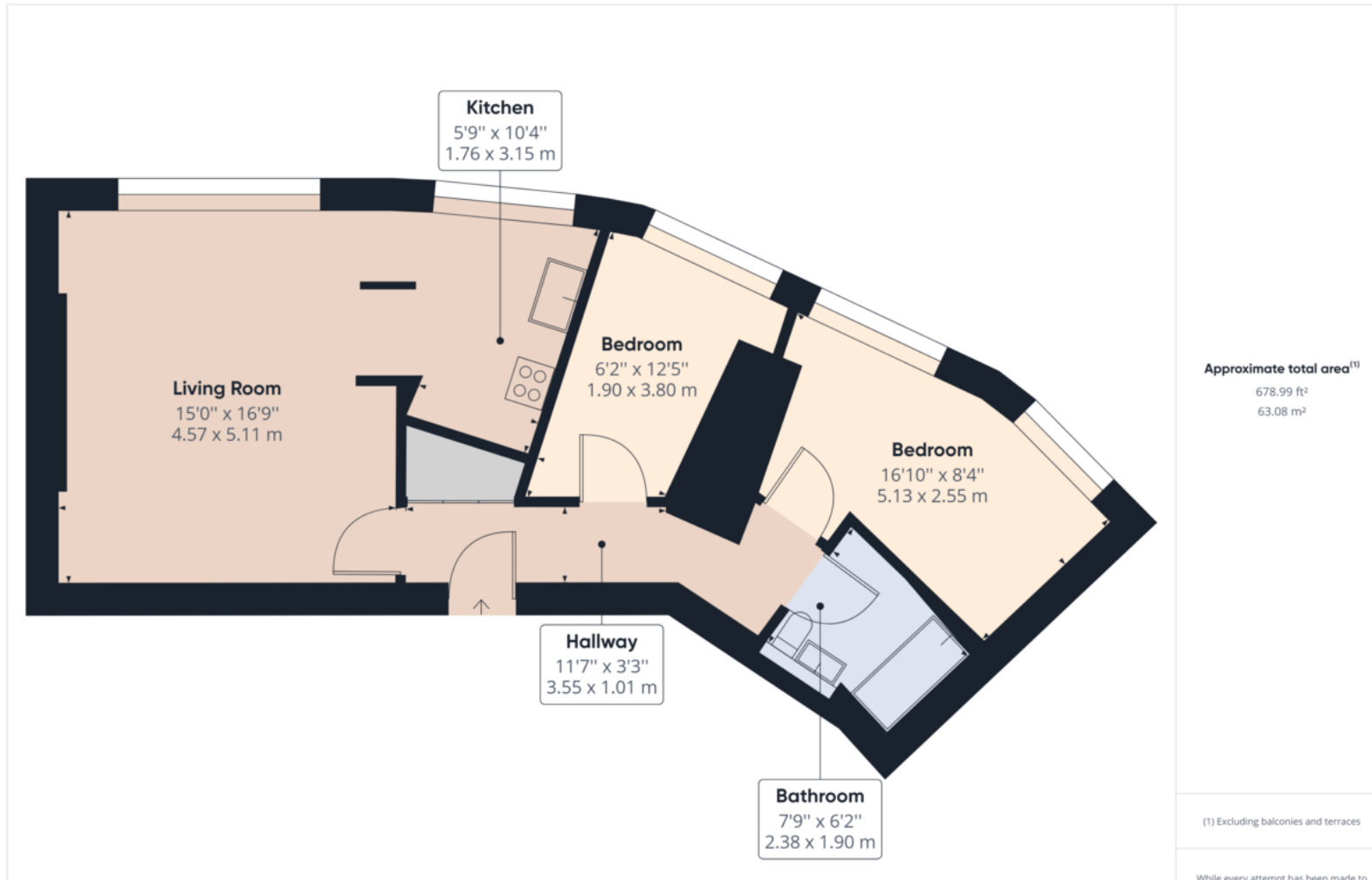
This highly sought-after location offers easy access to the university as well as an array of amenities including shops, restaurants, cafes, and bars. The apartment is also conveniently located close to public transportation links, making it easy to get around the city.

In conclusion, this is a truly special property that offers the perfect balance of modern convenience and traditional charm. With its spacious layout, modern amenities, and



Address:
Apartment 2, 061, 81 2HJ





Martin & Co Rotherham

5 Worry Goose Lane • Whiston • Rotherham • S60 4AA
T: 01709 544982 • E: rotherham@martinco.com

01709 544982

<http://www.martinco.com>



Accuracy: References to the Tenure of a Property are based on information supplied by the Seller. The Agent has not had sight of the title documents. A Buyer is advised to obtain verification from their Solicitor. Items shown in photographs including but not limited to carpets, fixtures and fittings are not included unless specifically mentioned within the sales particulars. They may however be available by separate negotiation. Buyers must check the availability of any property and make an appointment to view before embarking on any journey to see a property. No person in the employment of the agent has any authority to make any representation about the property, and accordingly any information given is entirely without responsibility on the part of the agents, sellers(s) or lessors(s). Any property particulars are not an offer or contract, nor form part of one. **Sonic / Laser Tape:** Measurements taken using a sonic / laser tape measure may be subject to a small margin of error. **All Measurements:** All Measurements are Approximate. **Services Not tested:** The Agent has not tested any apparatus, equipment, fixtures and fittings or services and so cannot verify that they are in working order or fit for the purpose. A Buyer is advised to obtain verification from their Solicitor or Surveyor.

