



High Road, Broxbourne

£995pcm

A Delightful One Bedroom ground floor flat with a spacious open plan Living Area and Kitchen neatly tucked away behind the shops in the centre of Broxbourne. The property has just been redecorated, comes with one parking space and is available immediately. Local shops and amenities are virtually on the doorstep and Broxbourne Railway Station (London Liverpool Street) is approximately 0.25 of a mile.

High Road

Approximate Gross Internal Area = 40.3 sq m / 434 sq ft

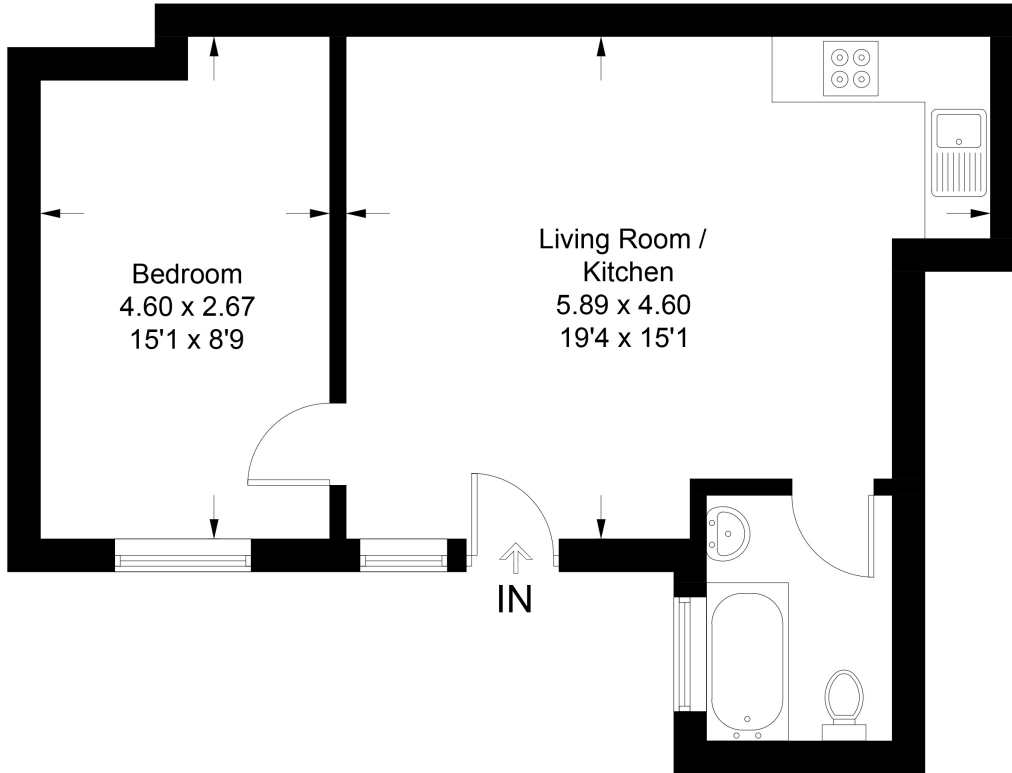


Illustration for identification purposes only, measurements are approximate, not to scale. FloorplansUsketch.com © 2024 (ID1063667)

Important notice 1. Particulars: These particulars are not an offer or contract, nor part of one. You should not rely on statements by Reynolds Salter in the particulars or by word of mouth or in writing ("information") as being factually accurate about the property, its condition or its value. Neither Reynolds Salter nor any joint agent has any authority to make any representations about the property, and accordingly any information given is entirely without responsibility on the part of the agents, seller(s) or lessor(s). 2. Photos etc: The photographs show only certain parts of the property as they appeared at the time they were taken. Areas, measurements and distances given are approximate only. Regulations etc: Any reference to alterations to, or use of, any part of the property does not mean that any necessary planning, building regulations or other consent has been obtained. A buyer or lessee must find out by inspection or in other ways that these matters have been properly dealt with and that all information is correct. 4. VAT: The VAT position relating to the property may change without notice.

25a High Road, Broxbourne,

Herts, EN10 7HX

www.reynoldssalter.co.uk

01992 449000