



160 Stride Avenue, Baffins

Portsmouth

Offers in Region of £270,000

 chinneckshaw



160 Stride Avenue

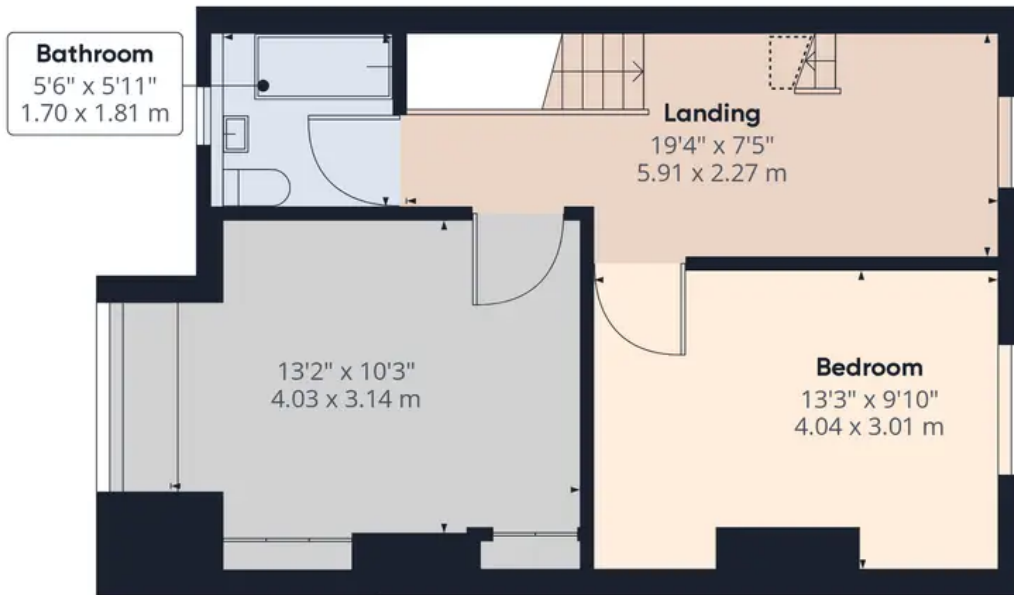
Baffins, Portsmouth

Located in the heart of Baffins! If you are looking for a quirky property with lots of character and potential then this one has to be at the top of your viewing list! With good size rooms, this lovely home was originally built with three bedrooms but the current owners have removed a stud partition wall to make an extra large landing area. This could easily be put back to create a third bedroom or you could leave it as is to give you a large open plan landing study area! This property is perfect for those of you wanting to make this house your home. The property boasts a forecourt at the front, offering a welcoming entrance to the home. Inside, you'll find a bright and airy open plan Lounge Dining Room to the rear of the property which overlooks the south facing garden. This area is a great size and with a wood burning stove taking pride of place in the fireplace this could make a cosy yet spacious place to entertain. The Kitchen can be found at the front of the house in what used to be the Lounge. It works really well too! This is a good size room and perfectly laid out as a Kitchen breakfast room with a bay window to the front aspect and a range of wall and base cabinets. This room has lots of potential for modernisation could be easily upgraded to your own taste. Upstairs, you'll find an extra large landing with a window to the rear aspect. We think this space could be used to great effect as a study/office area or you could simply put the stud wall back up to create a third bedroom to your preferred size! The other two bedrooms are both large doubles and ready for you to decorate to your own taste. The bathroom is located at the front of the property and while perfectly serviceable we think would benefit from a new suite to help you make this house your home. Outside, the garden is south facing with patio and an array of shrubs and trees giving you a good degree of privacy. There is also a pedestrian access via a gate to the side. All in all this property offers plenty of scope for those of you looking to create their dream home. With no forward chain and in a fantastic location, this property is not to be missed.

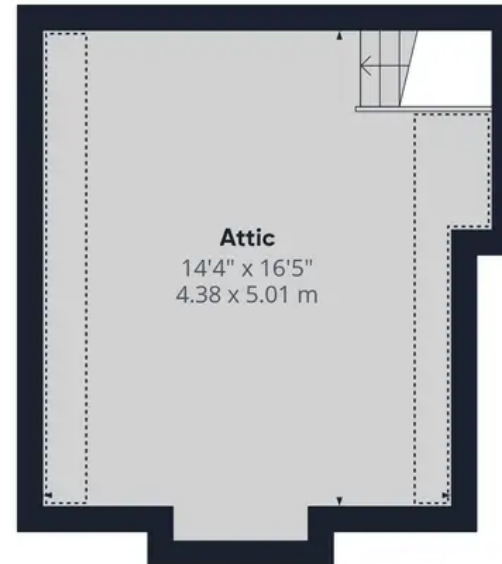




Ground Floor



Floor 1



Floor 2

Approximate total area⁽¹⁾

1119.12 ft²

103.97 m²

Reduced headroom

61.55 ft²

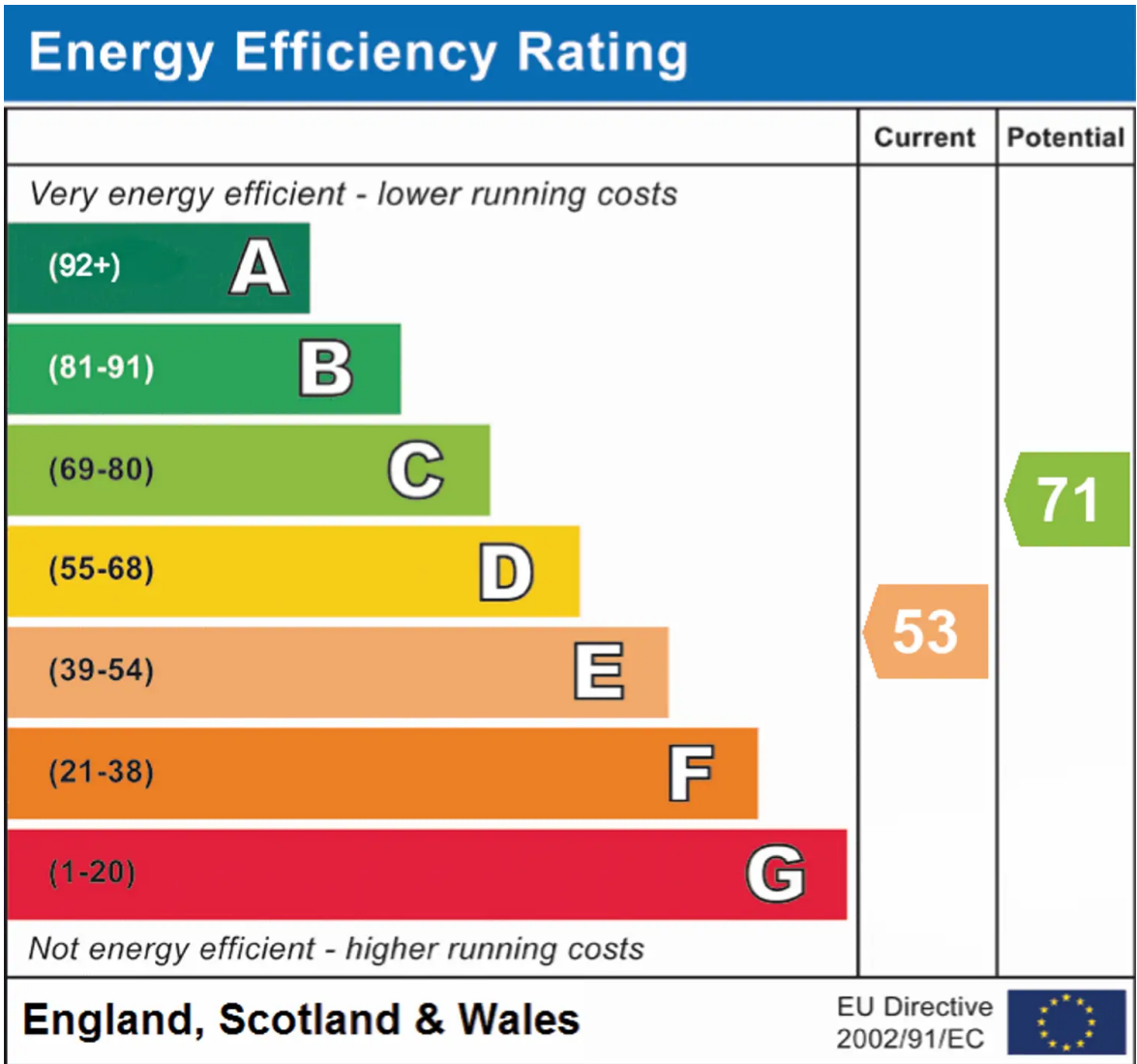
5.72 m²

(1) Excluding balconies and terraces

 Reduced headroom
(below 1.5m/4.92ft)

While every attempt has been made to ensure accuracy, all measurements are approximate, not to scale. This floor plan is for illustrative purposes only.

GIRAFFE360



Chinneck Shaw

Bridge House, Milton Road, Portsmouth – PO3 6AN

023 9282 6731

hello@chinneckshaw.co.uk

www.chinneckshaw.co.uk/

Chinneck Shaw, Bridge House, Milton Road, PO3 6AN Consumer Protection from Unfair Trading Regulations 2008: These details are for guidance only and complete accuracy cannot be guaranteed. If there is any point which is of particular importance, verification should be obtained. The do not constitute a contract or part of a contract. All measurements are approximate. No guarantee can be given with regard to planning permissions or fitness for purpose. No apparatus, equipment, fixture or fitting has been tested. Items shown in the photographs are NOT necessarily included. Interested Parties are advised to check availability and make an appointment to view before travelling to see a property.