



Flat 82, Dolphin Court Kingsmead Road, High Wycombe

£215,000



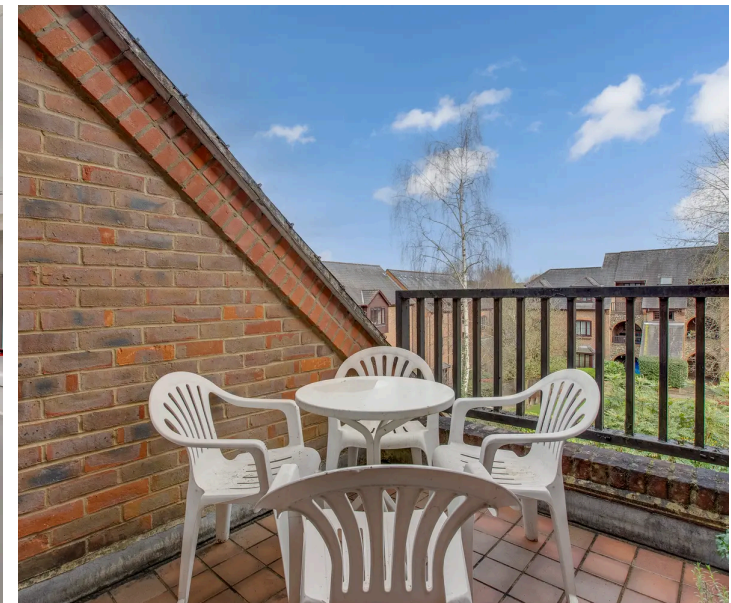
Flat 82

Dolphin Court Kingsmead Road, High Wycombe

A top floor apartment in this sought after development which boasts a lovely outlook over the Japanese style gardens from the roof terrace. The residents benefit from the on site Gym/Swimming pool complex. Entrance hall, Sitting room, Kitchen, Bedroom, Bathroom, Electric heating, Double glazing, Allocated and visitors parking.

Council Tax band: D

Tenure: Leasehold





Entrance hall

Storage heater, security entryphone, access to loft space, airing cupboard housing foam clad hot water cylinder and cold water tank

Sitting room

With door to roof terrace, storage heater, two windows to front overlooking gardens

Kitchen

Fitted with a range of eye and base level units incorporating sink unit with mixer tap and drainer, built in Hotpoint oven, fitted four ring Electrolux hob with extractor over, space for fridge/freezer, space and plumbing for washing machine, part tiled walls, window to rear

Bedroom

With fitted double wardrobe, Dimplex convector heater, window to rear

Bathroom

White suite comprising panelled bath with mixer tap and shower attachment, low level W.C., wash hand basin with mixer tap, shaver point, tiled walls, tiled flooring, wall mounted Dimplex heater

Communal gardens

The gardens are particularly well maintained based around a central water feature.

Parking

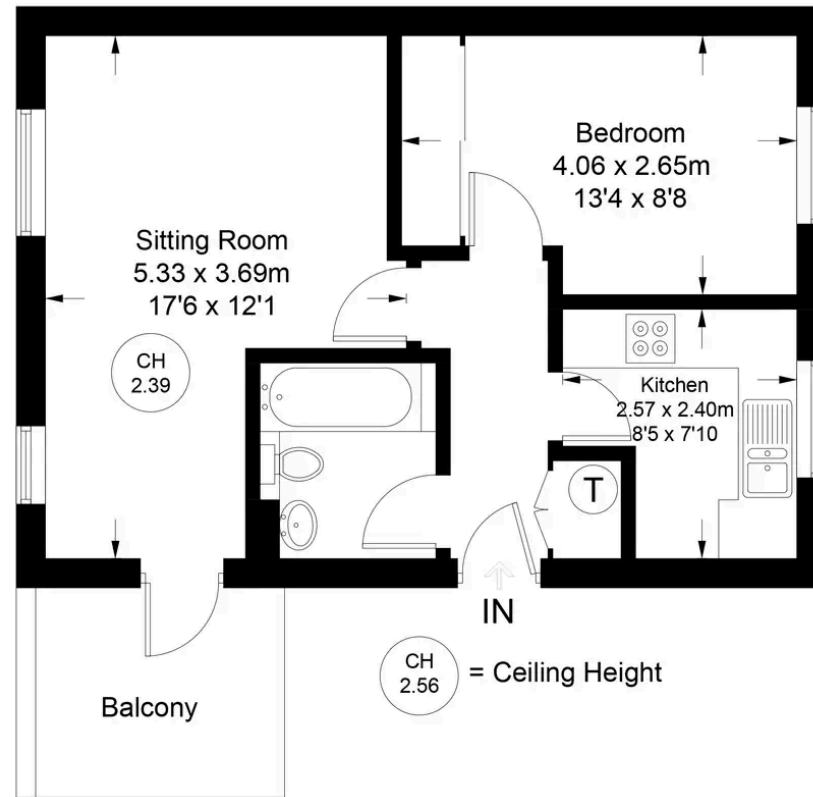
There is a larger than usual allocated parking space plus visitor parking spaces

Communal gym/swimming pool complex

The property benefits from a heated indoor residents swimming pool and gym



Approximate Gross Internal Area = 41.4 sq m / 446 sq ft



Second Floor

Floor Plan produced for Robertsons by Media Arcade ©.
Illustration for identification purposes only. Window and door openings are approximate. Whilst every attempt is made to assure accuracy in the preparation of this plan, please check all dimensions, shapes and compass bearings before making any decisions reliant upon them.



Robertsons