

10 Glen Rise

Brighton BN1 5LP

Offers in the region of £750,000

- REFURBISHED THROUGHOUT
- VERSATILE FOUR BEDROOM ACCOMMODATION
- NEW KITCHEN
- NEW BATHROOM AND SHOWER ROOM
- LIVING ROOM
- SITTING ROOM
- GOOD SIZE REAR GARDEN
- PRIVATE DRIVE

Whitlock and Heaps are pleased to offer to market this detached family home that offers versatile four-bedroom accommodation having just been refurbished with a new kitchen, bathroom and shower room. The property features two separate reception rooms and a delightful private rear garden being approached via a private drive.

There is also approved planning BH2023/01 268 to convert to a substantial three-storey house with two separate reception rooms, a stunning open plan kitchen/living area with five bedrooms with the master suite including a walk-in wardrobe and ensuite.

ENCLOSED ENTRANCE PORCH

ENTRANCE HALL Radiator, fitted cupboard.

KITCHEN/BREAKFAST ROOM Incorporating sink unit with drainer and mixer tap, adjacent worksurface with cupboards and drawers under, matching eye-level wall cupboard, inset ceramic hob with concealed extractor over, oven, cupboard housing 'Worcester' gas-fired boiler, appliance space, radiator, two UPVC double glazed windows, door to garden.

SITTING ROOM UPVC double glazed bay window, radiator.

LIVING ROOM UPVC double glazed window, radiator, stairs to first floor.

BEDROOM 1 UPVC double glazed window, radiator.

BEDROOM 2 UPVC double glazed window, radiator.

BATHROOM White suite comprising panelled bath with mixer tap and shower over, wash-hand basin with cupboard under, low level w.c., heated ladder style towel rail, tiled floor, part tiled walls, UPVC double glazed window.

FIRST FLOOR

BEDROOM 3 UPVC double glazed window, radiator.

BEDROOM 4 UPVC double glazed window, radiator.

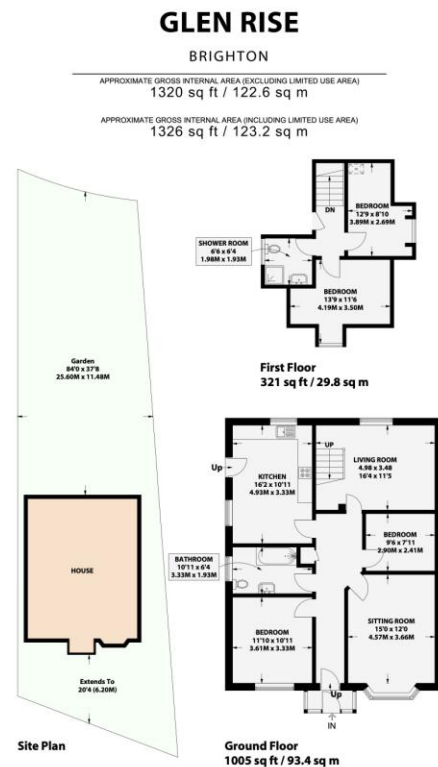
SHOWER ROOM Comprising walk-in shower, wash-hand basin with cupboard under, low level w.c., heated ladder style towel rail, UPVC double glazed window, tiled floor.

OUTSIDE

PRIVATE DRIVE

FRONT GARDEN Laid to lawn with area of shingle.

REAR GARDEN Being fully enclosed and mainly laid to lawn with a patio area, path offering side access.



wh whitlock & heaps

Floor plan is for illustration and identification purposes only and is not to scale. Plots, gardens, balconies and terraces are illustrative only and excluded from all area calculations. All the plans are for illustration purposes only and are not to scale. This floor plan has been produced in accordance with Royal Institution of Chartered Surveyors' International Property Standards 2 (IPMS2). Every attempt has been made to ensure the accuracy however all measurements, fixtures, fittings and data shown is an approximate interpretation for illustrative purposes only.

© Whitlock & Heaps 2024

CH	Ceiling Height
T	Hot Water Tank
FF	Fridge / Freezer
1.5m	Head Height Below 1.5m
M.P.	Measuring Points
S	Storage Cupboard
W	Fitted Wardrobes
G	Garden Shortened for Display

Z

RICS Certified Property Measurer

Portslade Branch

48 Boundary Road, Portslade BN3 4EF
portslade@whitlockandheaps.co.uk
01273 422706

Hove Branch

65 Sackville Road, Hove BN3 3WE
hove@whitlockandheaps.co.uk
01273 778577



Disclaimer: Whitlock & Heaps have produced these particulars in good faith and they are set out as a general guide. Accuracy is not guaranteed, nor do they form part of any contract. If there is any particular aspect of these details which you require any confirmation, please do contact us, especially if contemplating a long journey. All measurements are approximate. Fixtures and fittings, other than those mentioned above, to be agreed with the seller. Any services, systems or appliances at the property have not been tested.