



**Flat 4, 4 Primrose Gardens, Ruislip**

Ruislip

**£385,000**



**LAWRENCE RAND**

# Flat 4

4 Primrose Gardens, Ruislip

A spacious two double bedroom first-floor maisonette with the benefit of garage and rear garden. The property has its private entrance into lobby area and stairs to first-floor landing area. Council Tax band: C

Tenure: Leasehold

- Two bedrooms
- First-floor maisonette
- Large garage
- Rear garden
- 106 years lease

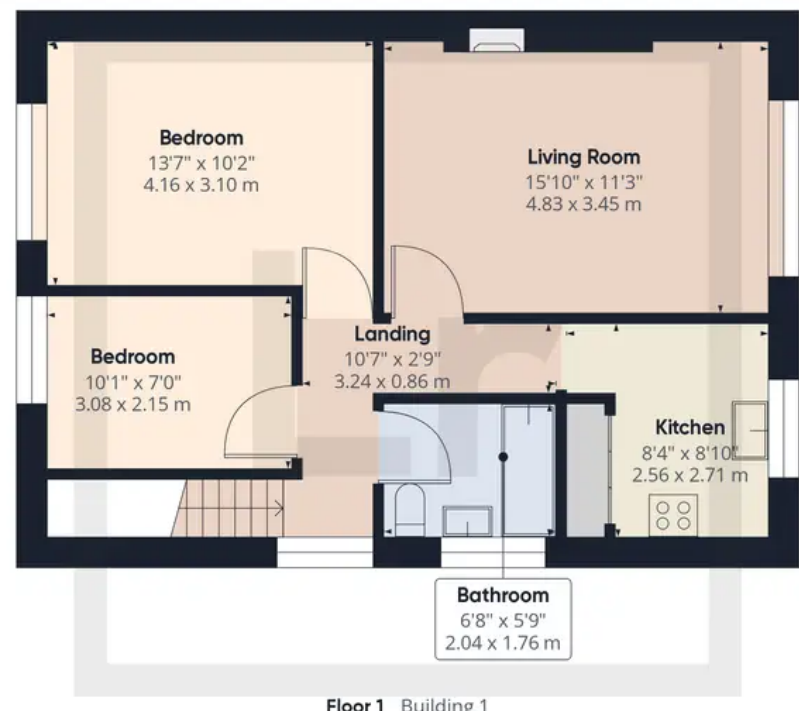




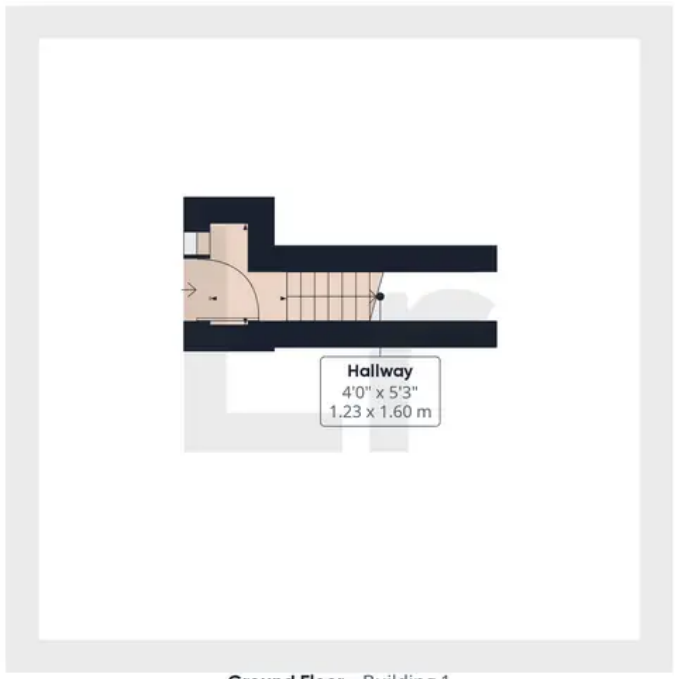
**Approximate total area<sup>(1)</sup>**  
789.89 ft<sup>2</sup>  
73.38 m<sup>2</sup>

(1) Excluding balconies and terraces

While every attempt has been made to ensure accuracy, all measurements are approximate, not to scale. This floor plan is for illustrative purposes only.



**Floor 1** Building 1



**Ground Floor** Building 1



**Ground Floor** Building 2



## Lawrence Rand

Lawrence Rand, 106 Victoria Road - HA4 0AL

01895 632211

[Info@lawrence-rand.co.uk](mailto:Info@lawrence-rand.co.uk)

[www.lawrence-rand.co.uk/](http://www.lawrence-rand.co.uk/)



**LAWRENCE RAND**