



# Southcliffe, 2 South Drive, Harrogate

Harrogate

Guide Price £399,950



# MYRINGS





## Southcliffe, 2 South Drive , Harrogate

An impressive tastefully appointed 3 bedroom penthouse apartment occupying an enviable position along a sought after tree lined drive to the South side of Harrogate's town centre, and benefits from having two off street parking spaces and a large 17'1 x 14'5 decked roof top garden ideal for garden furniture.

Council Tax band: E

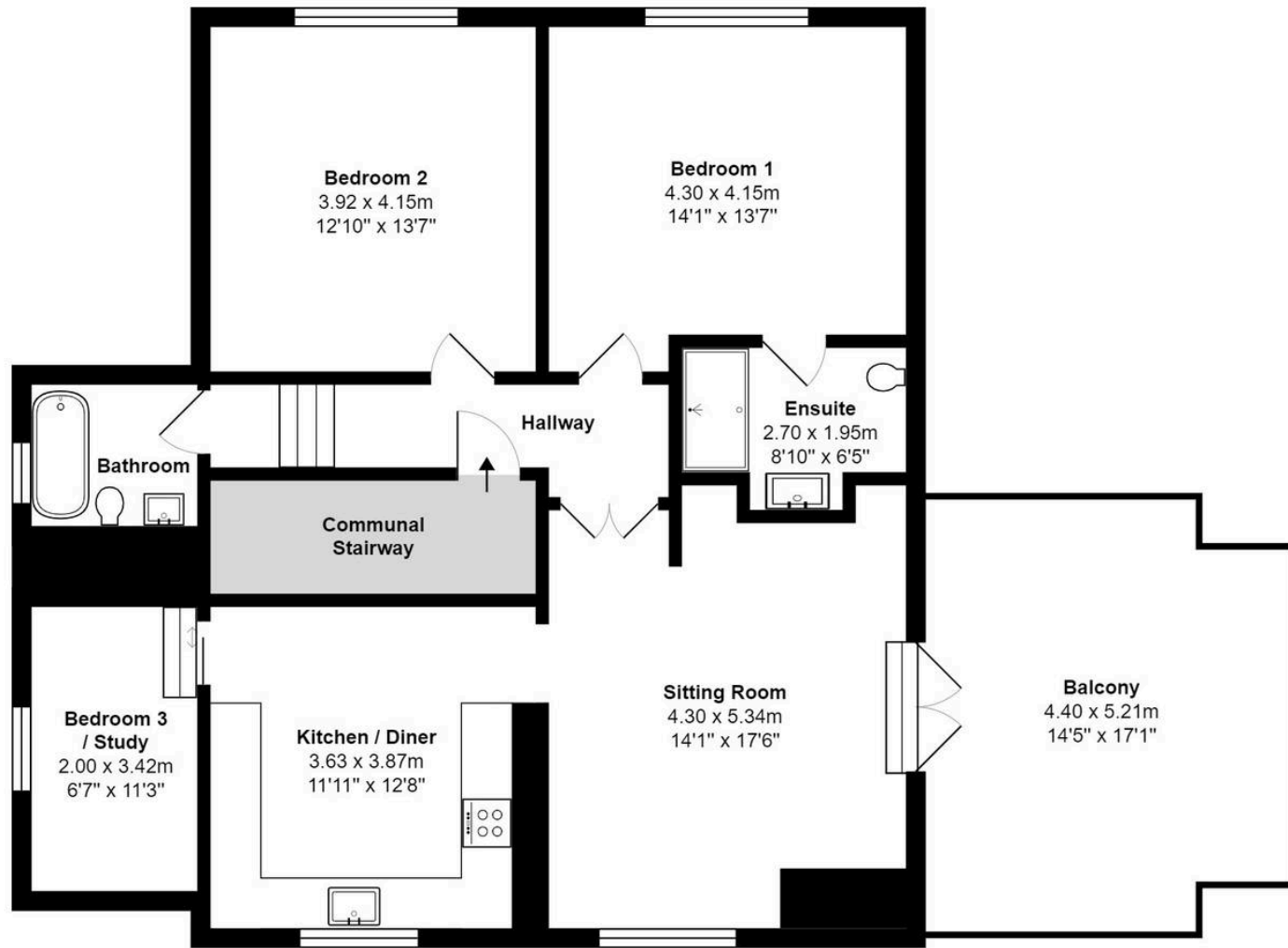
Tenure: Leasehold

- STUNNING PENTHOUSE APARTMENT
- 17'1 x 14'5 PRIVATE DECKED SUN TERRACE
- 2 REFURBISHED BATHROOMS
- STYLISH BREAKFAST KITCHEN
- 2 ALLOCATED PARKING SPACES
- IDEAL SECOND HOME
- CLOSE TO LEEDS ROAD STRAY PARKLAND









**Second Floor**

Total Area: 93.9 m<sup>2</sup> ... 1011 ft<sup>2</sup> (excluding communal stairway, balcony)

All measurements are approximate and for display purposes only.









## Myrings Estate Agents

Myrings Estate Agents Ltd, 10 Princes Square - HG1 1LX

01423

566400

▪ [enquiries@myringsestateagents.com](mailto:enquiries@myringsestateagents.com) ▪ <http://myringsestateagents.com/>

