



3 Ash Grove, Lydd

£330,000 Freehold

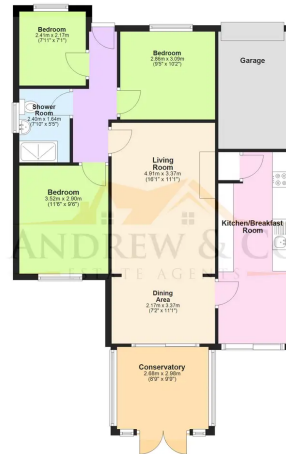
Three Bedroom • Semi Detached Bungalow • New Kitchen • Large Living Room • Conservatory • Large Rear Garden • Garage • Cul de Sac Location • Chain Free





Ground Floor

Approx. 91.5 sq. metres (984.4 sq. feet)



Total area: approx. 91.5 sq. metres (984.4 sq. feet)

Plans are for layout purposes only and not drawn to scale, with all doors, windows and other internal features merely intended as a guide. Plans produced using PlanIt3D.

