



Whielden Street  
Amersham

# Whielden Street

Amersham

## Offers In Excess Of £745,000

lounge/dining room | boot room | lobby | kitchen | family bathroom | first floor landing | two double bedrooms | second floor study area | bedroom | rear garden | garden room

A stunning 17th century property offering characterful accommodation over three floors, perfectly placed for accessing the delights of the Old Town.

Retaining charming period details throughout, this unique Grade II listed home features a wealth of exposed beams and beautiful fireplaces. Accommodation includes an open-plan lounge/dining room and adjoining boot room. A vaulted lobby leads to the traditionally-styled kitchen, which benefits from french doors opening to the garden. A modern family bathroom completes the ground floor.

The first floor comprises two double bedrooms, each with fitted wardrobes. A study area and a further bedroom are located on the second floor.

Outside, the pretty enclosed garden at the rear features brick paving complemented by mature planting. There is also the benefit of a separate garden room.

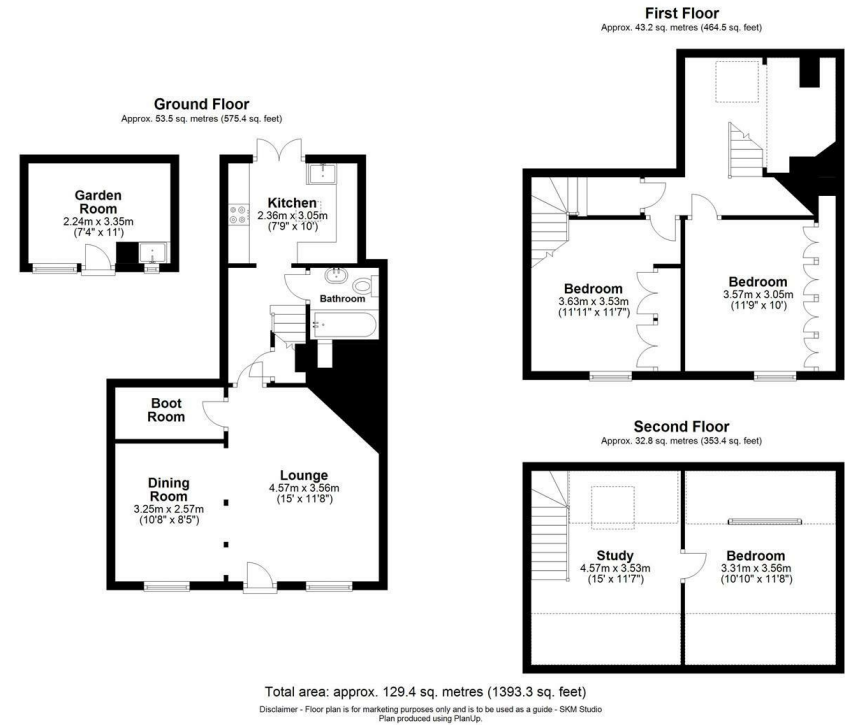
### Services

Gas fired boiler serving domestic hot water and heating. Mains water, electricity and drainage. Council tax band G (Chiltern).

### Situation

Amersham is a vibrant town offering a superb balance between commuter convenience (Chiltern Railways into Marylebone and the Metropolitan line into central London) and easy access to the surrounding Chilterns' countryside. Old Amersham has a 13th century parish church and several old pubs, coaching inns and boutique shops, while Amersham-on-the-Hill includes a wider array of shops and eateries. Acclaimed local schooling includes Dr Challoners Grammar schools, Chesham Grammar and Amersham School. Independent schooling is also well catered for. Amersham lies within seven miles of the M25 at Junction 18 and is six miles from Junction 2 of the M40.

These particulars are produced in good faith, are set out as a general guide only and do not constitute any part of a contract. None of the statements are to be relied on as a statement of fact. Areas, measurements or distances are given as a guide only. We have not tested any of the equipment, appliances or services to this property nor do we have knowledge of any defects.



Relax... you're with Oakleys

151 High Street Berkhamsted Hertfordshire HP4 3HH 01442 386555 [www.oakleysestate.co.uk](http://www.oakleysestate.co.uk)

