



Pippin Close, New Romney

New Romney

£750,000

3 Pippin Close

New Romney, New Romney

A simply stunning large family home set within an idyllic location on the very edge of New Romney with far reaching views over farmland! Situated within a peaceful cul de sac this family home was constructed by Pentland to their popular 'Rochester' design which offers 2665 sq. feet of light and airy accommodation, perfect for the larger family looking to spread out.

Council Tax band: G

Tenure: Freehold

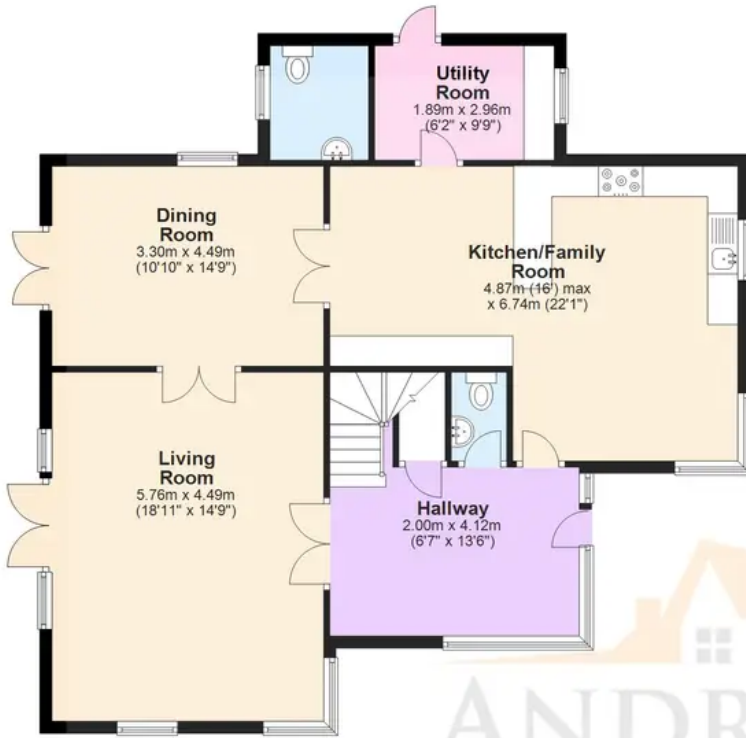
- Detached Home
- Protected Countryside Views
- Generous Living Space
- Master Bedroom Suite
- Four Double Bedrooms
- Three Ensuite Bedrooms
- Double Garage
- Kitchen/Family Room







Ground Floor
Approx. 95.9 sq. metres (1032.7 sq. feet)



First Floor
Approx. 99.2 sq. metres (1067.3 sq. feet)



Second Floor
Approx. 52.5 sq. metres (565.4 sq. feet)



Total area: approx. 247.6 sq. metres (2665.4 sq. feet)

Plans are for layout purposes only and not drawn to scale, with any doors, windows and other internal features merely intended as a guide. NB: Total square footage includes outbuildings and garaging.
Plan produced using PlanUp.

These particulars are intended to give a fair and reliable description of the property but no responsibility for any inaccuracy or error can be accepted and do not constitute an offer or contract. We have not tested any services or appliances (including central heating if fitted) referred to in these particulars and purchasers are advised to satisfy themselves as to the working order and condition, if a property is unoccupied at any time there may be reconnection charges for any switched off/disconnected or drained services or appliances. All measurements are approximate.



Andrew & Co Estate Agents - New Romney

01797 362898

newromney@andrewandco.co.uk

