



## 33 Williamson Road, Lydd On Sea

£300,000 Freehold

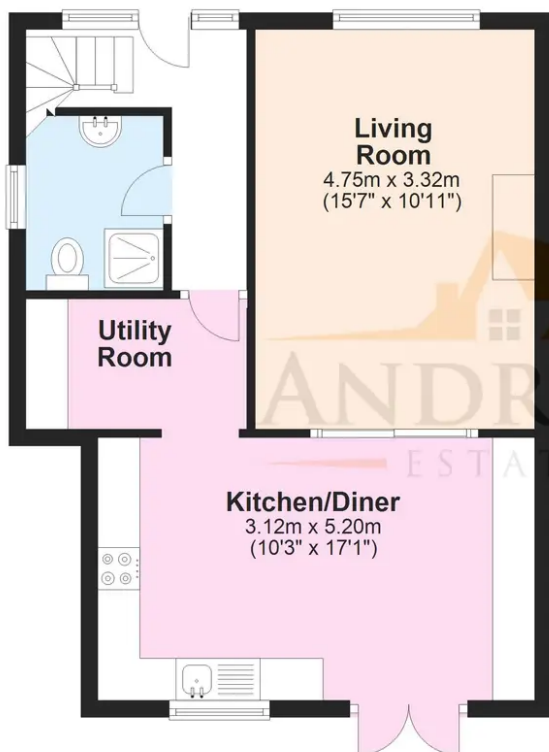
Two Bedroom • Chalet Style Home • Large Living Room • Open Country Views • Popular Location





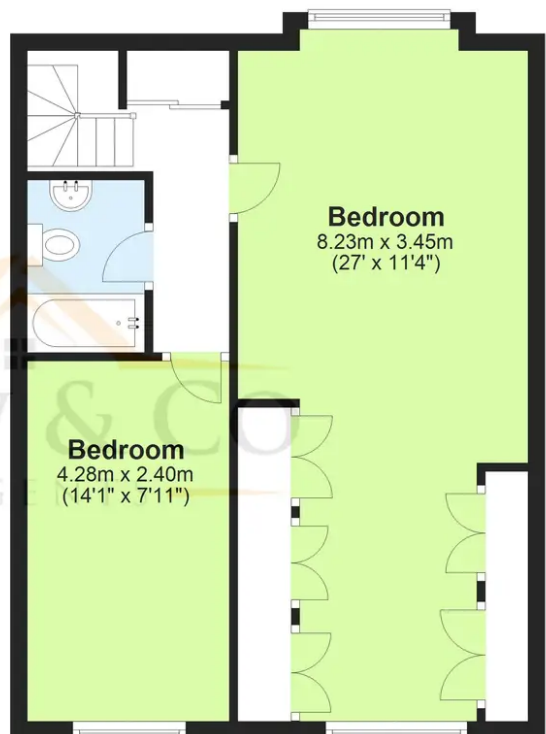
### Ground Floor

Approx. 45.5 sq. metres (489.7 sq. feet)



### First Floor

Approx. 48.0 sq. metres (516.4 sq. feet)



Total area: approx. 93.5 sq. metres (1006.1 sq. feet)

Plans are for layout purposes only and are not drawn to scale, with any doors, windows and other internal features merely intended as a guide.

Plan produced using PlanUp.