



10 Sandyhurst Lane, Ashford
£700,000

10 Sandyhurst Lane

Ashford, Ashford

A substantial chalet style bungalow, enjoying in excess of 2000sqft of internal accommodation, plenty of driveway parking to the front, large south-easterly facing rear garden, potential for further extension and is offered for sale with no onward chain.

Council Tax band: E

Tenure: Freehold

- Versatile accommodation offering 4/5 bedrooms
- Large extending living room
- Impressive kitchen/dining room and separate formal dining room
- Two bathrooms - one on each floor
- Lovely large garden, south-easterly facing
- Plenty of driveway parking
- Prestigious Sandyhurst Lane location
- Easy reach of local amenities including the M20, Town Centre, International Station and Schools
- Substantial chalet style family home



Entrance Hallway

Study

Bedroom/Reception room

Shower room

Living room

Kitchen/dining room

Dining room

Utility room

WC

First floor landing

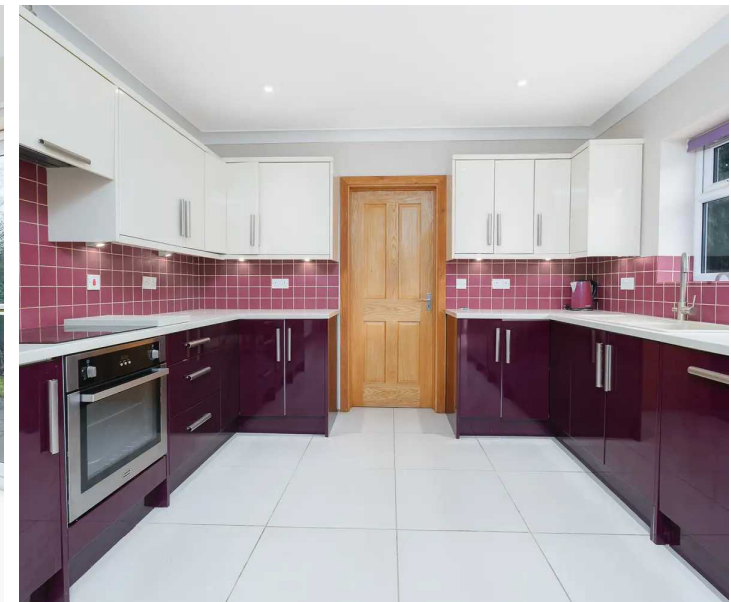
Bedroom

Bedroom

Bedroom

Bathroom

Attic space



REAR GARDEN

GARAGE

Single Garage

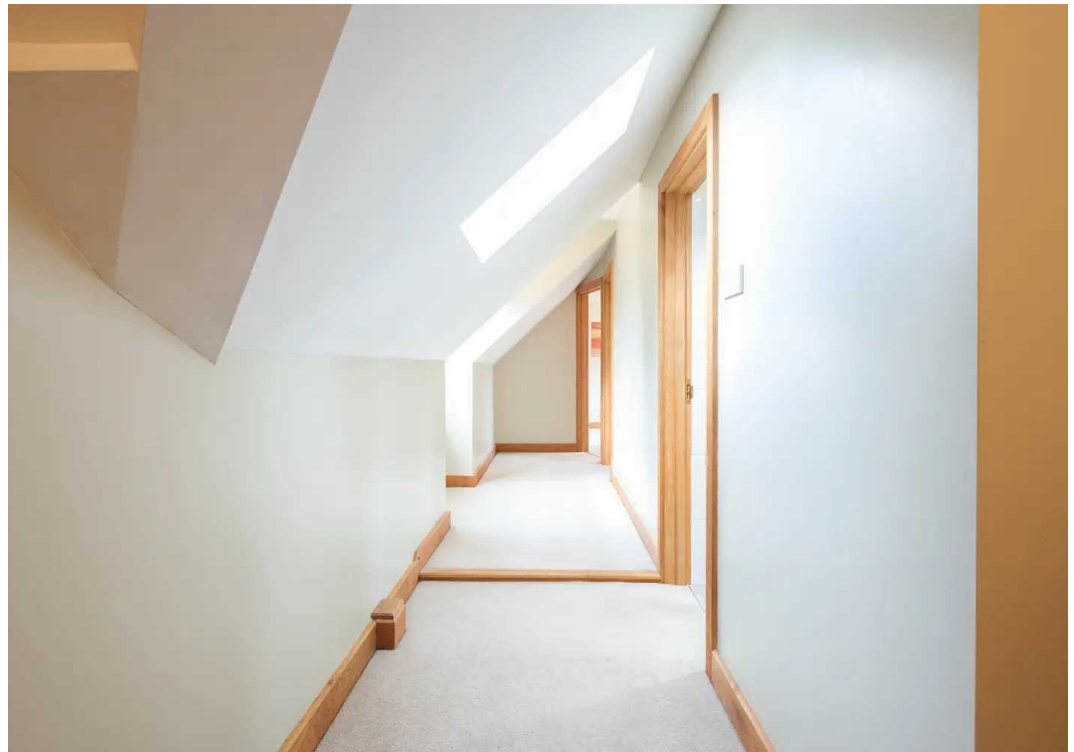
GARAGE

5 Parking Spaces













Ground Floor

Approx. 114.2 sq. metres (1229.3 sq. feet)



First Floor

Approx. 58.0 sq. metres (624.7 sq. feet)



Total area: approx. 172.2 sq. metres (1854.0 sq. feet)

Plans are for layout purposes only and are not drawn to scale, with any doors, windows and other internal features merely intended as a guide.
Plan produced using PlanUp.