



Laurel Avenue, St. Marys Bay

Romney Marsh

£320,000

13 Laurel Avenue

St. Marys Bay, Romney Marsh

fabulous two bedroom bungalow set on the trees estate in St Marys Bay, Located a short walk from the village shops, community centre, beach and major bus routes. Comprising of large living room, kitchen, two double bedrooms and garage, this home needs to be seen to appreciate all that is on offer
Council Tax band: C

Tenure: Freehold

- Two Bedroom
- Semi Detached
- Bungalow
- Large Living Room
- Double Bedrooms





Entrance Hall

Living Room

17' 6" x 12' 10" (5.33m x 3.91m)

Kitchen

11' 7" x 8' 1" (3.52m x 2.47m)

Inner Hallway

Bedroom

13' 11" x 9' 8" (4.24m x 2.95m)

Bedroom

11' 5" x 9' 7" (3.49m x 2.92m)

Bathroom

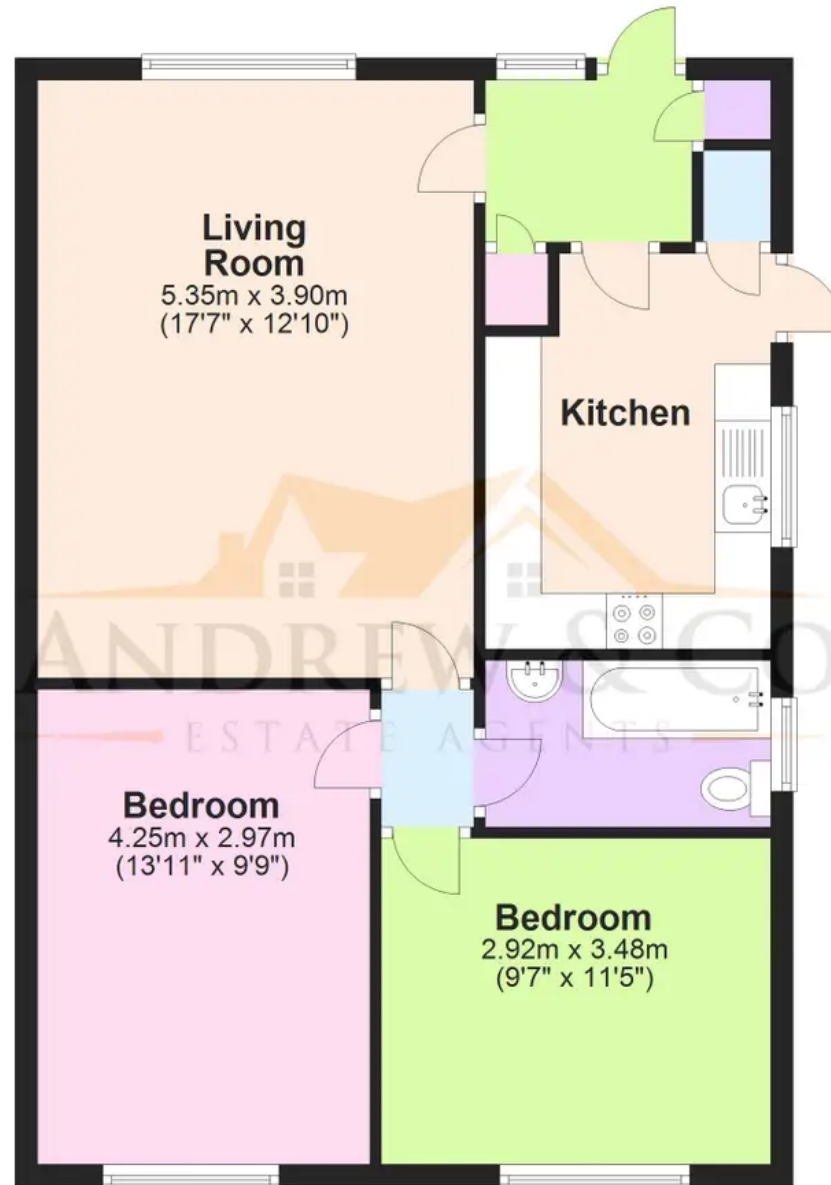
8' 2" x 4' 10" (2.48m x 1.48m)





Ground Floor

Approx. 63.6 sq. metres (684.5 sq. feet)



Total area: approx. 63.6 sq. metres (684.5 sq. feet)

Plans are for layout purposes only and are not drawn to scale, with any doors, windows and other internal features merely intended as a guide.

Plan produced using PlanUp.

These particulars are intended to give a fair and reliable description of the property but no responsibility for any inaccuracy or error can be accepted and do not constitute an offer or contract. We have not tested any services or appliances (including central heating if fitted) referred to in these particulars and purchasers are advised to satisfy themselves as to the working order and condition, if a property is unoccupied at any time there may be reconnection charges for any switched off/disconnected or drained services or appliances. All measurements are approximate.



Andrew & Co Estate Agents - New Romney

01797 362898

newromney@andrewandco.co.uk

