

Ellis Drive, New Romney

New Romney

Guide Price £400,000

12 Ellis Drive

New Romney, New Romney

Stunning 3-bed link-detached house with countryside views. Spacious living areas, modern kitchen, bright conservatory, utility room, garage. Generous bedrooms, luxury bathroom. Private garden, ample parking. Perfect combination of indoor and outdoor living. Chain-free. Arrange a viewing now.

Council Tax band: D

Tenure: Freehold

- Three Bedroom
- Link Detached House
- Two Reception Rooms
- Conservatory
- Utility Room
- Integral Garage
- Open Countryside Views
- Chain Free





Entrance Hall
6' 2" x 14' 4" (1.87m x 4.37m)

Living Room
13' 8" x 10' 11" (4.17m x 3.33m)

Dining Room
10' 7" x 10' 1" (3.22m x 3.08m)

Conservatory
10' 8" x 7' 10" (3.26m x 2.40m)

Kitchen
9' 9" x 12' 11" (2.96m x 3.93m)

Utility Room
8' 0" x 5' 1" (2.44m x 1.55m)

WC
3' 3" x 4' 6" (0.99m x 1.37m)

Landing

Bedroom
9' 11" x 11' 9" (3.02m x 3.57m)

Bedroom
9' 11" x 10' 0" (3.02m x 3.05m)

Bedroom
10' 0" x 7' 8" (3.05m x 2.34m)

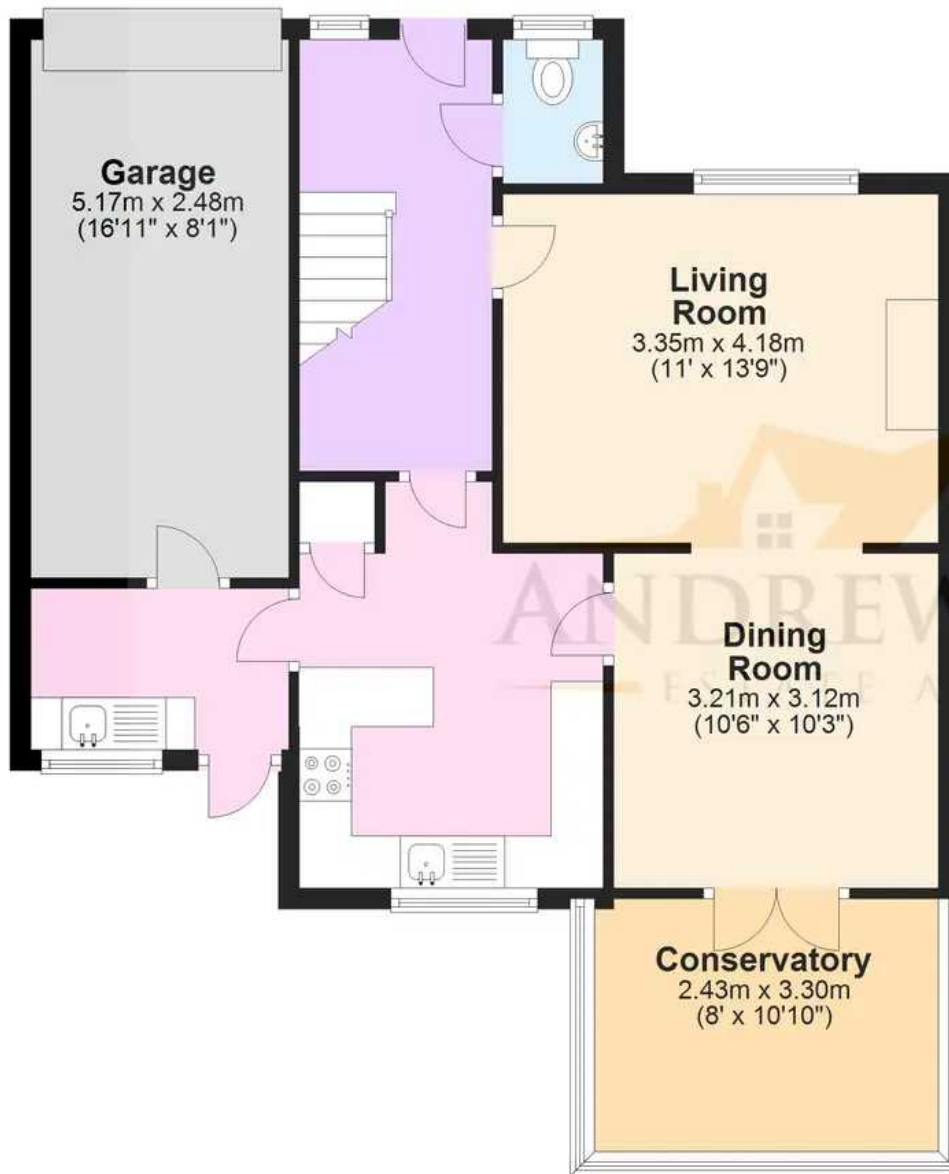
Family Shower Room
6' 7" x 8' 7" (2.00m x 2.61m)





Ground Floor

Approx. 71.1 sq. metres (764.8 sq. feet)



First Floor

Approx. 41.5 sq. metres (446.5 sq. feet)



Total area: approx. 112.5 sq. metres (1211.3 sq. feet)

Plans are for layout purposes only and not drawn to scale, with any doors, windows and other internal features merely intended as a guide.
Plan produced using PlanUp.

These particulars are intended to give a fair and reliable description of the property but no responsibility for any inaccuracy or error can be accepted and do not constitute an offer or contract. We have not tested any services or appliances (including central heating if fitted) referred to in these particulars and purchasers are advised to satisfy themselves as to the working order and condition, if a property is unoccupied at any time there may be reconnection charges for any switched off/disconnected or drained services or appliances. All measurements are approximate.



Andrew & Co Estate Agents - New Romney

01797 362898

newromney@andrewandco.co.uk

