



11 Dymchurch Court Godinton Road, Ashford

Part Buy, Part Rent £82,250

11 Dymchurch Court Godinton Road

Ashford, Ashford

Contemporary 2-bed apartment, perfect for professionals or small families. Spacious open-plan layout, two balconies, and ample storage.

Abundance of natural light. Allocated parking. Convenient location near town centre and train station. Close to local amenities.

Council Tax band: B

Tenure: Leasehold

- Two Bedroom Apartment
- Modern Design
- Open Plan Style Layout
- Modern Family bathroom. Three piece suit with shower over bath
- Integrated appliances
- Two Balconys one being able to access from both bedrooms and on from the open plan living
- Allocated parking space
- Local Amenities in Walking Distance



Entrance Hall

Open Plan Living

24' 1" x 17' 7" (7.34m x 5.37m)

Bedroom

12' 4" x 10' 5" (3.77m x 3.17m)

Bedroom

10' 10" x 7' 5" (3.31m x 2.25m)

Bathroom



BALCONY

BALCONY

ALLOCATED PARKING

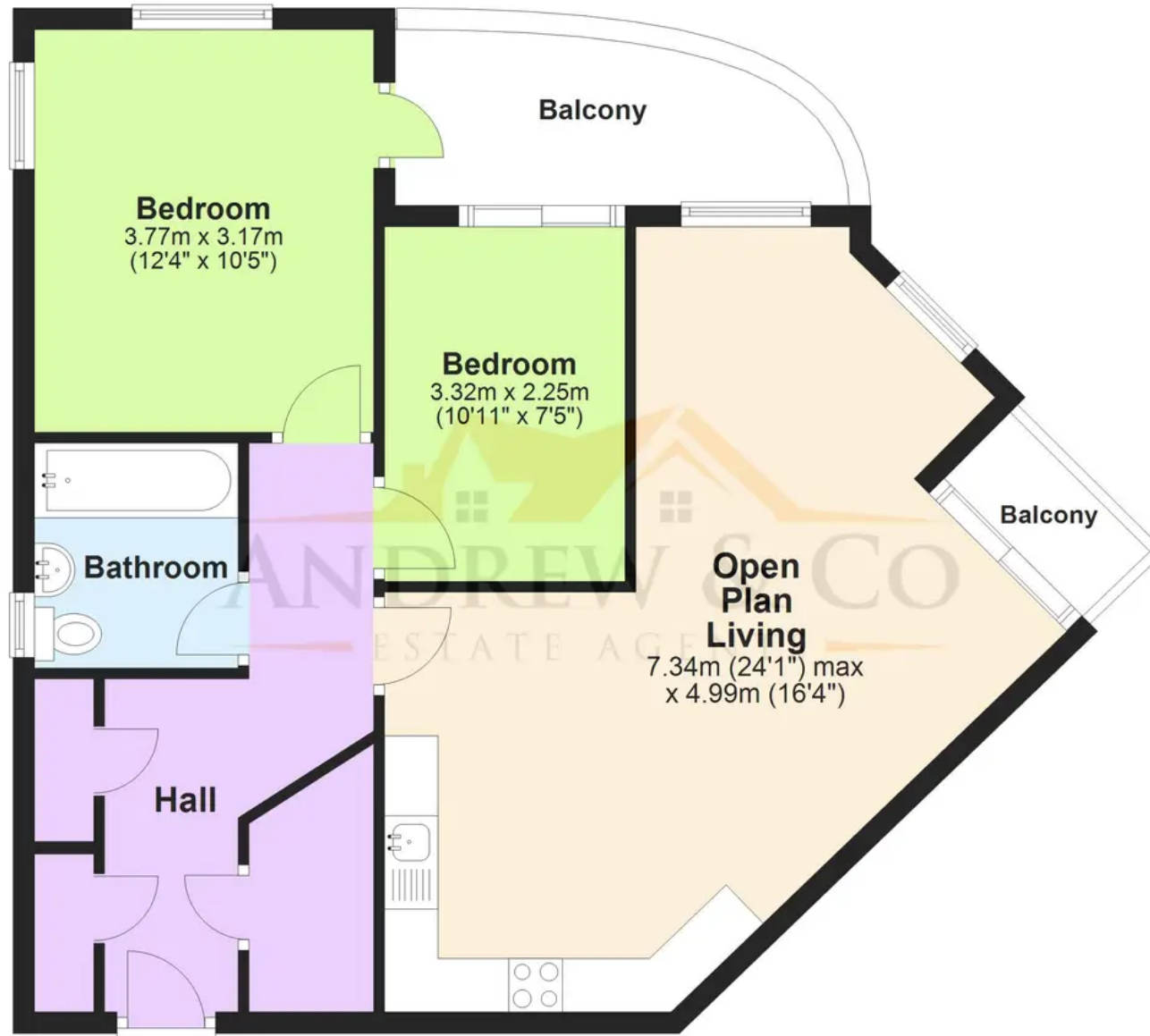
1 Parking Space





Ground Floor

Approx. 65.9 sq. metres (709.4 sq. feet)



Total area: approx. 65.9 sq. metres (709.4 sq. feet)

Plans are for layout purposes only and not drawn to scale, with any doors, windows and other internal features merely intended as a guide.

Plan produced using PlanUp.