



**Blenheim Road, Littlestone**

New Romney

Guide Price **£800,000 – £850,000**



# Lime House Blenheim Road

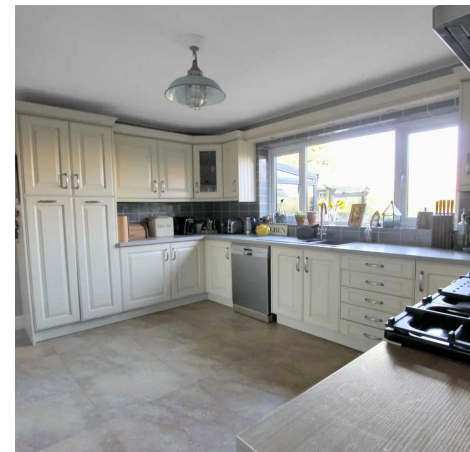
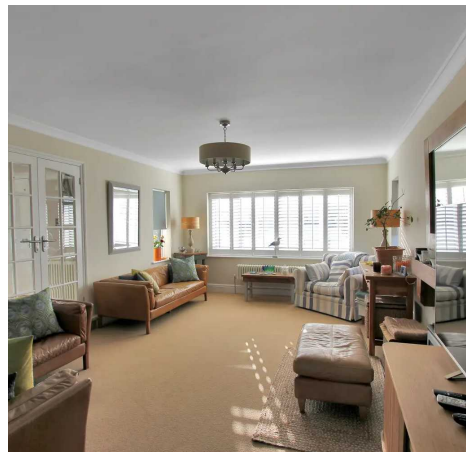
Littlestone, New Romney

Stunning 4/5-bed detached home with breathtaking sea views in sought-after location. Spacious and versatile living areas, including conservatory. Annexe potential. Serene rear garden. Close to sea front and local amenities. Must-see property for discerning buyers.

Council Tax band: G

Tenure: Freehold

- Four/Five Bedroom
- Detached Family Home
- Three Reception Space
- Sea Views from all Bedrooms
- En-suite to Master
- Walking Distance to Sea Front
- Pretty Rear Garden
- Large Light Living Room
- Conservatory
- Summer House/ Home Office







**Entrance Hall**

**Lounge**

18' 8" x 13' 0" (5.69m x 3.96m)

**Dining Area**

11' 11" x 14' 11" (3.63m x 4.56m)

**Conservatory**

9' 1" x 13' 2" (2.77m x 4.01m)

**Living Room**

14' 10" x 9' 2" (4.52m x 2.79m)

**Bedroom/Study**

9' 9" x 9' 10" (2.96m x 2.99m)

**Shower Room**

6' 0" x 5' 3" (1.83m x 1.60m)

**Kitchen**

11' 11" x 13' 11" (3.63m x 4.24m)

**Utility Room**

9' 1" x 9' 2" (2.77m x 2.79m)

**Landing**

14' 1" x 11' 4" (4.30m x 3.46m)

**Bedroom**

11' 10" x 12' 6" (3.61m x 3.82m)

**En-Suite Shower Room**

**Bedroom**

11' 10" x 12' 6" (3.61m x 3.82m)

**Bedroom**

11' 10" x 10' 0" (3.61m x 3.04m)

**Bedroom**

10' 7" x 10' 0" (3.22m x 3.04m)

**Bathroom**

8' 8" x 8' 11" (2.63m x 2.72m)







### Ground Floor

Approx. 124.5 sq. metres (1339.9 sq. feet)



### First Floor

Approx. 82.2 sq. metres (885.0 sq. feet)



Total area: approx. 206.7 sq. metres (2224.9 sq. feet)

Plans are for layout purposes only and are not drawn to scale, with any doors, windows and other internal features merely intended as a guide.  
Plan produced using PlanUp.

These particulars are intended to give a fair and reliable description of the property but no responsibility for any inaccuracy or error can be accepted and do not constitute an offer or contract. We have not tested any services or appliances (including central heating if fitted) referred to in these particulars and purchasers are advised to satisfy themselves as to the working order and condition, if a property is unoccupied at any time there may be reconnection charges for any switched off/disconnected or drained services or appliances. All measurements are approximate.



Andrew & Co Estate Agents - New Romney

01797 362898

[newromney@andrewandco.co.uk](mailto:newromney@andrewandco.co.uk)

