



Seabourne Way, Dymchurch

Romney Marsh

£350,000

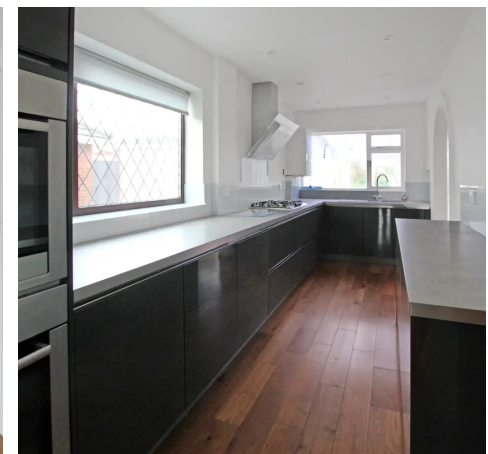
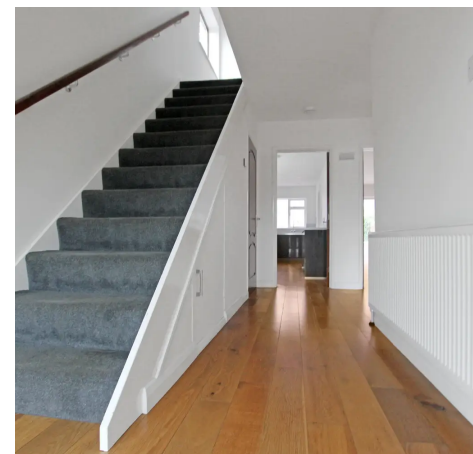
Seabourne Way

Dymchurch, Romney Marsh

Chain-free three bed semi-detached home with ample space for family living. Ground floor: large bedroom, living room, garden room. Modern galley kitchen with utility room. Luxurious bathroom with separate shower. Large sunny garden, plenty of parking & garage. Close to amenities. Dream home. Council Tax band: C

Tenure: Freehold

- Three Bedroom
- Semi Detached Home
- Ground Floor Bedroom
- Large Living Room
- Modern Galley Kitchen
- Large Sunny Garden





Porch

Hallway

Living Room

20' 7" x 11' 1" (6.27m x 3.39m)

Garden Room

9' 1" x 10' 7" (2.77m x 3.23m)

Kitchen

18' 7" x 6' 11" (5.66m x 2.11m)

Utility Room

12' 2" x 6' 4" (3.71m x 1.94m)

WC

Bedroom

12' 7" x 11' 3" (3.84m x 3.42m)

Landing

Bathroom

Bedroom

11' 1" x 13' 1" (3.37m x 3.98m)

Bedroom

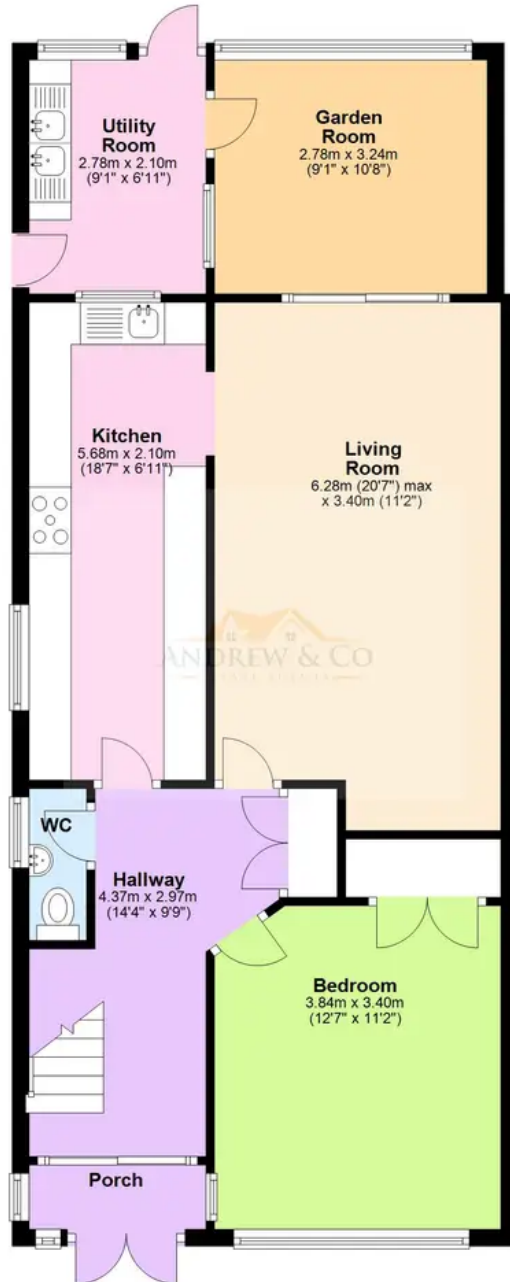
13' 4" x 12' 0" (4.07m x 3.66m)





Ground Floor

Approx. 77.4 sq. metres (833.0 sq. feet)



First Floor

Approx. 41.6 sq. metres (447.7 sq. feet)



Total area: approx. 119.0 sq. metres (1280.6 sq. feet)

Plans are for layout purposes only and not drawn to scale, with any doors, windows and other internal features merely intended as a guide.
Plan produced using PlanUp.

These particulars are intended to give a fair and reliable description of the property but no responsibility for any inaccuracy or error can be accepted and do not constitute an offer or contract. We have not tested any services or appliances (including central heating if fitted) referred to in these particulars and purchasers are advised to satisfy themselves as to the working order and condition, if a property is unoccupied at any time there may be reconnection charges for any switched off/disconnected or drained services or appliances. All measurements are approximate.



Andrew & Co Estate Agents - New Romney

01797 362898

newromney@andrewandco.co.uk

