

Lydd Road, New Romney

New Romney

£500,000

Lydd Road

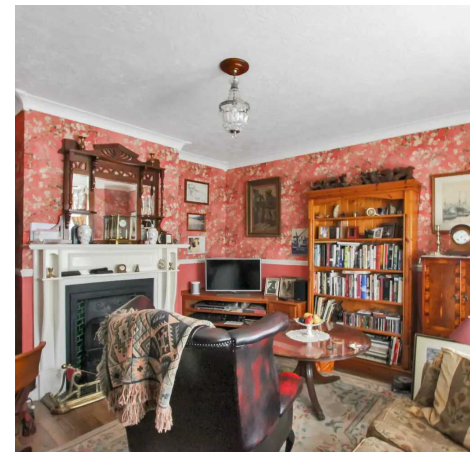
New Romney, New Romney

Rare opportunity to own a stunning three bed detached house with modern amenities and traditional charm. Spacious rooms, modern kitchen, luxurious bathroom, private garden, off-street parking, and garden office. Ideal for indoor-outdoor living in sought-after town centre location.

Council Tax band: E

Tenure: Freehold

- Three Bedroom
- Detached Home
- Character House
- Three Reception Rooms
- Large Modern Kitchen
- Garden Office
- Off Street Parking
- Utility Room
- Luxury Bathroom





Entrance Hall

Drawing Room

12' 6" x 12' 0" (3.80m x 3.66m)

Living Room

13' 11" x 12' 2" (4.25m x 3.70m)

Dining Room

13' 2" x 13' 1" (4.02m x 3.99m)

Kitchen

12' 1" x 13' 0" (3.69m x 3.97m)

Utility Room

WC

Landing

Bedroom

13' 2" x 11' 11" (4.01m x 3.64m)

Bedroom

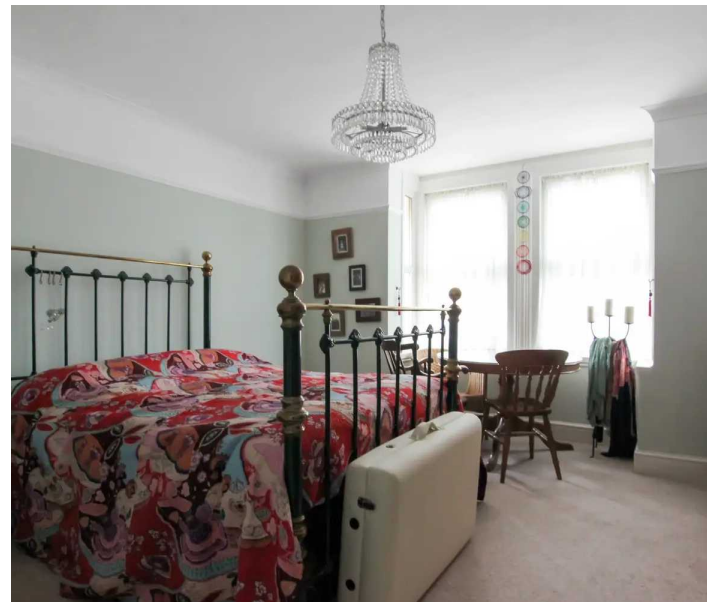
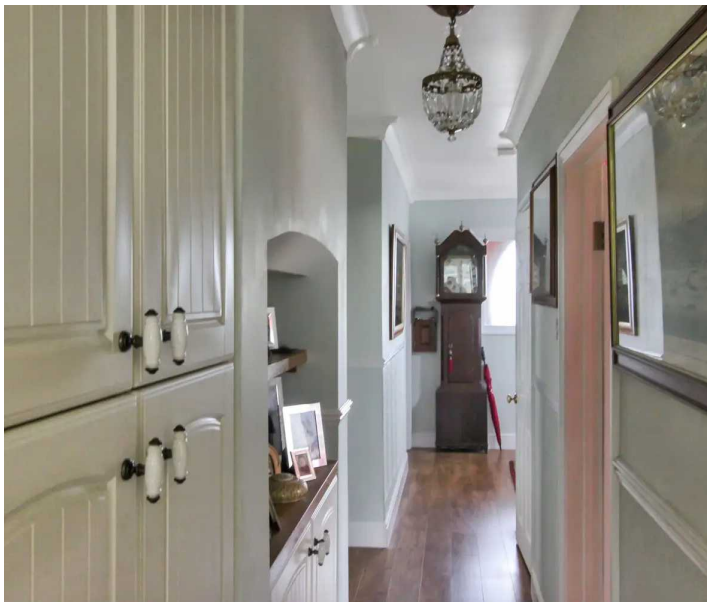
16' 3" x 12' 7" (4.95m x 3.83m)

Bedroom

10' 4" x 11' 3" (3.16m x 3.42m)

Bathroom

9' 5" x 11' 5" (2.87m x 3.47m)





Ground Floor

Approx. 88.8 sq. metres (956.2 sq. feet)



First Floor

Approx. 55.4 sq. metres (596.6 sq. feet)



Total area: approx. 144.3 sq. metres (1552.8 sq. feet)

Plans are for layout purposes only and are not drawn to scale, with any doors, windows and other internal features merely intended as a guide.
Plan produced using PlanUp.

These particulars are intended to give a fair and reliable description of the property but no responsibility for any inaccuracy or error can be accepted and do not constitute an offer or contract. We have not tested any services or appliances (including central heating if fitted) referred to in these particulars and purchasers are advised to satisfy themselves as to the working order and condition, if a property is unoccupied at any time there may be reconnection charges for any switched off/disconnected or drained services or appliances. All measurements are approximate.



Andrew & Co Estate Agents - New Romney

01797 362898

newromney@andrewandco.co.uk

