



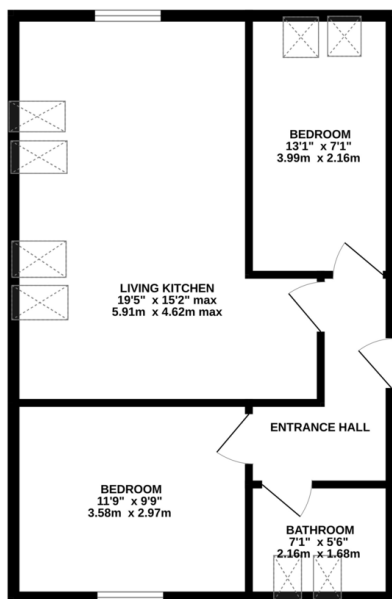
FOR SALE

2 Bed Apartment in Old School Court, Kibworth, LE8 0RZ
£160,000

*** No Chain *** Private development of apartments nestled close to the town centre with all the shops and amenities that the village provides. The property itself is a second floor apartment and the accommodation comprises communal hall, entrance hall, open plan living kitchen, two bedrooms, bathroom and one allocated parking space.



GROUND FLOOR
551 sq.ft. (51.2 sq.m.) approx.



TOTAL FLOOR AREA: 551 sq ft. (51.2 sq m.) approx.
Whilst every attempt has been made to ensure the accuracy of the floorplan contained here, measurements of doors, windows, cupboards and any other areas are approximate and no responsibility is taken for any error, omission or mis-statement. This plan is for illustrative purposes only and should be used as such by any prospective purchaser. The services, fixtures and appliances shown here are not guaranteed and no guarantee as to their operability or efficiency can be given.
Made with Metrepro 12/2014

Energy Efficiency Rating		Current	Potential
Very energy efficient - lower running costs			
(92-100)	A		
(81-91)	B		
(69-80)	C	79	79
(55-68)	D		
(39-54)	E		
(21-38)	F		
(1-20)	G		
Not energy efficient - higher running costs			
England, Scotland & Wales		EU Directive 2002/91/EC	

- No Chain
- Apartment
- Second Floor
- Leasehold
- Great Village Location
- All located Parking Space
- Two Bedrooms
- Ideal Investment Or First Time Buy

Agents Note: Whilst every care has been taken to prepare these sales particulars, they are for guidance purposes only. All measurements are approximate are for general guidance purposes only and whilst every care has been taken to ensure their accuracy, they should not be relied upon and potential buyers are advised to recheck the measurements.

