



38 Victoria Road, Richmond

Offers in the Region of £199,950

Located a short walk into the Town Centre, this period cottage is well presented throughout, full of character and provides generous living spaces. To the ground floor there is a large breakfast kitchen, a living room and a second living room, whilst to the first floor there are two bedrooms and a modern shower room. Externally there is a small patio garden. Offered to the market CHAIN FREE, an early inspection is strongly advised!

Period Town Centre Cottage – Entrance Hallway – Living Room – Study – Breakfast Kitchen – Two Bedrooms – Modern Shower Room – CHAIN FREE

21 Market Place, Richmond, North Yorkshire, DL10 4QG

38 Victoria Road, Richmond

Located a short walk into the Town Centre, this period cottage is well presented throughout, full of character and provides generous living spaces. To the ground floor there is a large breakfast kitchen, a living room and a second living room, whilst to the first floor there are two bedrooms and a modern shower room. Externally there is a small patio garden. Offered to the market CHAIN FREE, an early inspection is strongly advised!

Entrance Hallway:

Accessed through a timber panelled door and having entrance matting and coat hooks.

Living Room:

A generous room featuring a large fireplace that houses an impressive log burning stove.



There is a TV point, a radiator and a double glazed sliding sash window to the front of the property.



Second Living Room:

A very useful additional room which could be a home office, second living room or an additional bedroom.

It has a radiator and a sliding sash window to the patio.



Breakfast Kitchen:

With space for a small table and fitted with a range of quality wall and base units with soft close fittings and butchers block style countertops.



Integrated into the units are a Belfast sink, and electric hob and oven, a fridge, a freezer, a washing machine and a dishwasher. There are two radiators, a double glazed sliding sash window to the front of the property, a window to the rear and a half glazed door to the patio.



First Floor Landing:

With a radiator, a sliding sash window, no loft access

Bedroom:

A large double bedroom with two radiators, an original fireplace, a built in wardrobe and a double glazed sliding sash window to the front of the property.



Bedroom:

With a radiator and a double glazed sliding sash window to the front of the property.



Shower Room:

The well appointed shower room has a large enclosure with a dual headed shower, a WC and a wash hand basin on a vanity unit. There is a heated towel rail and a window.



External

To the rear there is a private paved courtyard area and a useful store.

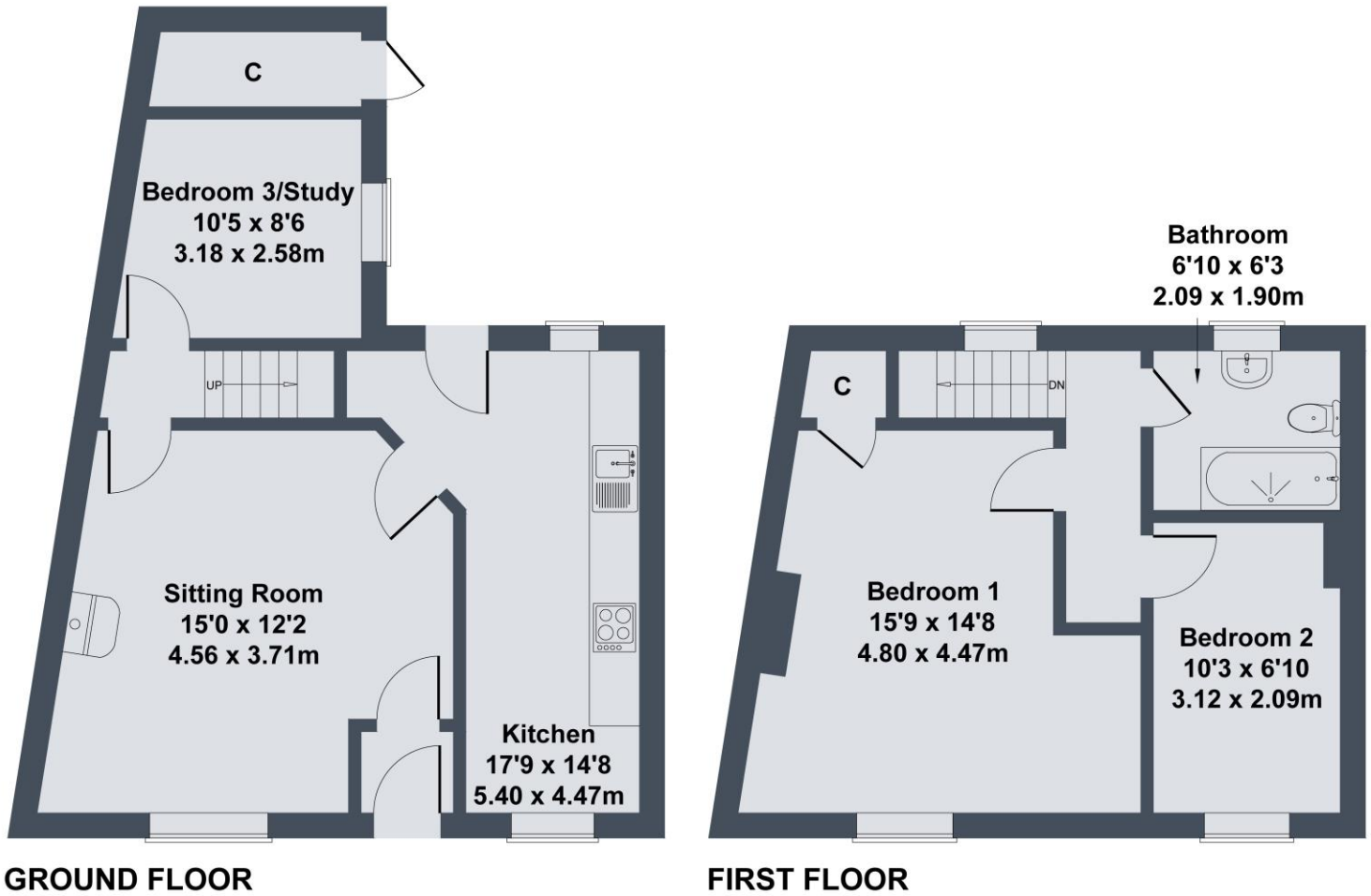


Additional Information

The postcode is DL10 4AU and the Council Tax Band is C.

The Worcester gas central heating boiler is located in the kitchen.

38 Victoria Road, Richmond



SKETCH PLAN FOR ILLUSTRATIVE PURPOSES ONLY

All measurements walls, doors, windows, fittings and appliances, their sizes and locations, are approximate only. They cannot be regarded as being a representation by the seller, nor their agent.

Produced by Potterplans Ltd. 2023

Viewing Arrangements - by appointment with Irvings Property Ltd

Property Misdescriptions Act 1991 - PLEASE NOTE CAREFULLY

These particulars have been prepared for guidance only. We have not carried out a detailed survey, nor tested the services, appliances or specific fittings. Floor plans are not drawn to scale unless stated, measurements and distances are approximate only. Do not rely on them for carpets and furnishings. Photographs are not necessarily current and you should not assume that contents shown are included in the sale.