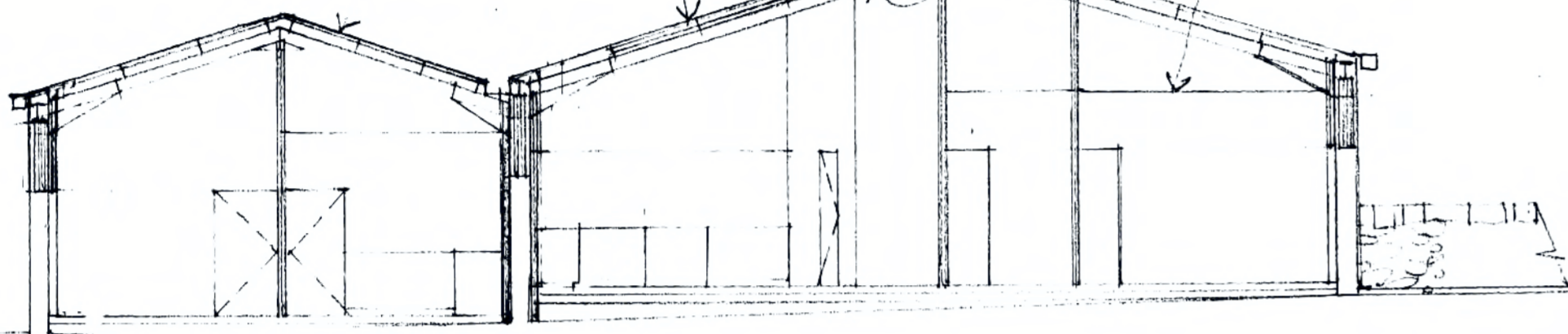


SOUTH

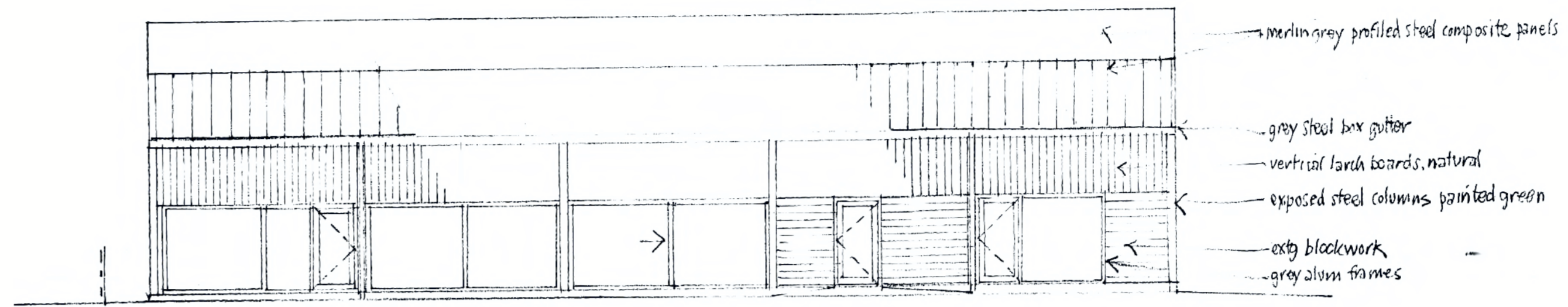
grey composite panel roof covering

flush fit rooflights

sloping ceiling to v/c purlins, insulated void
suspended flat ceilings to smaller rooms



AA



WEST

Merlin grey profiled steel composite panels

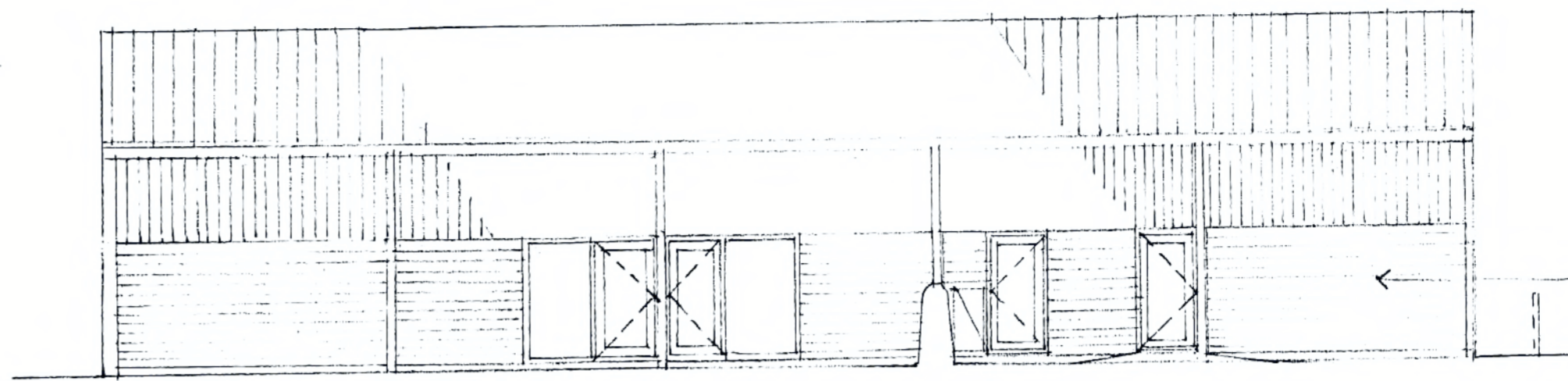
grey steel box gutter

vertical larch boards, natural

exposed steel columns, painted green

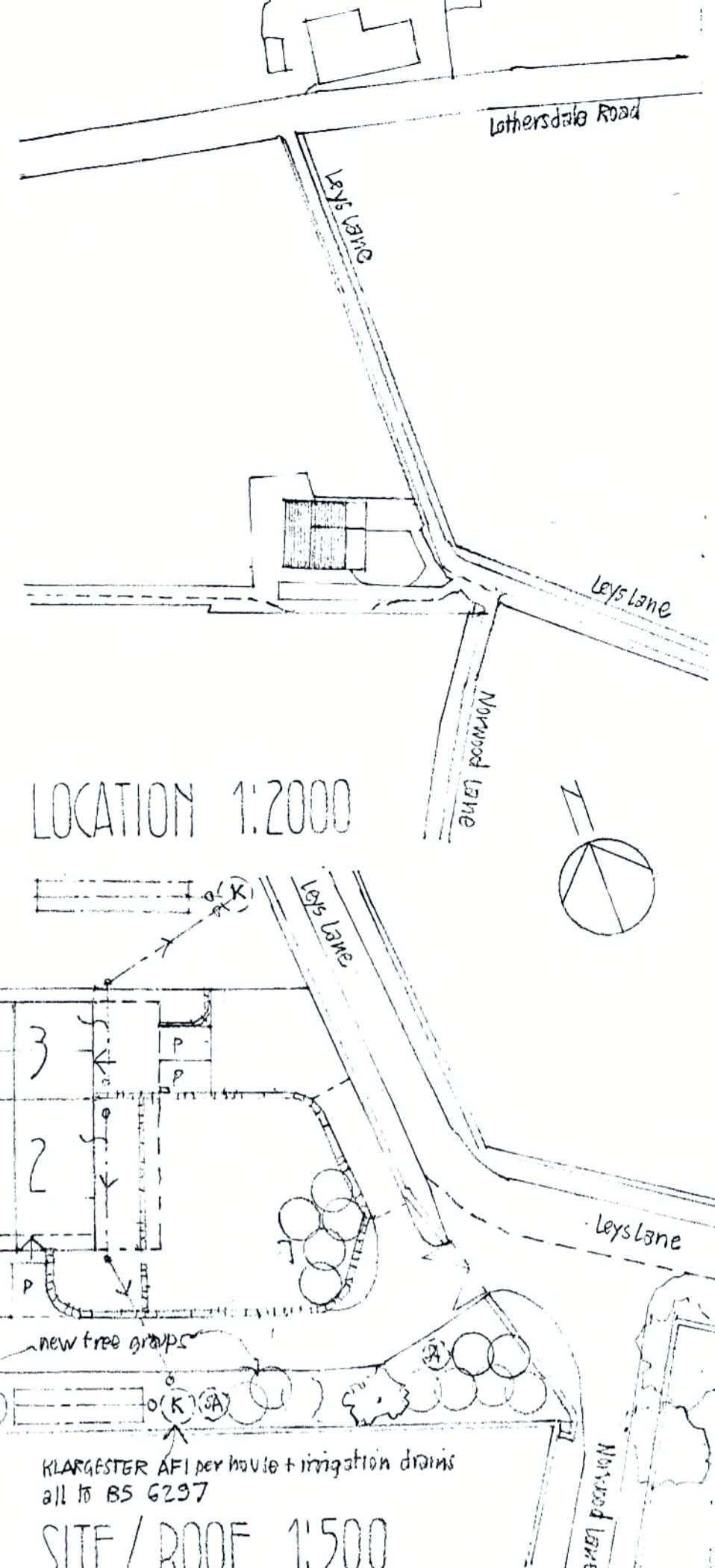
exty blackwork

grey alum frames



EAST

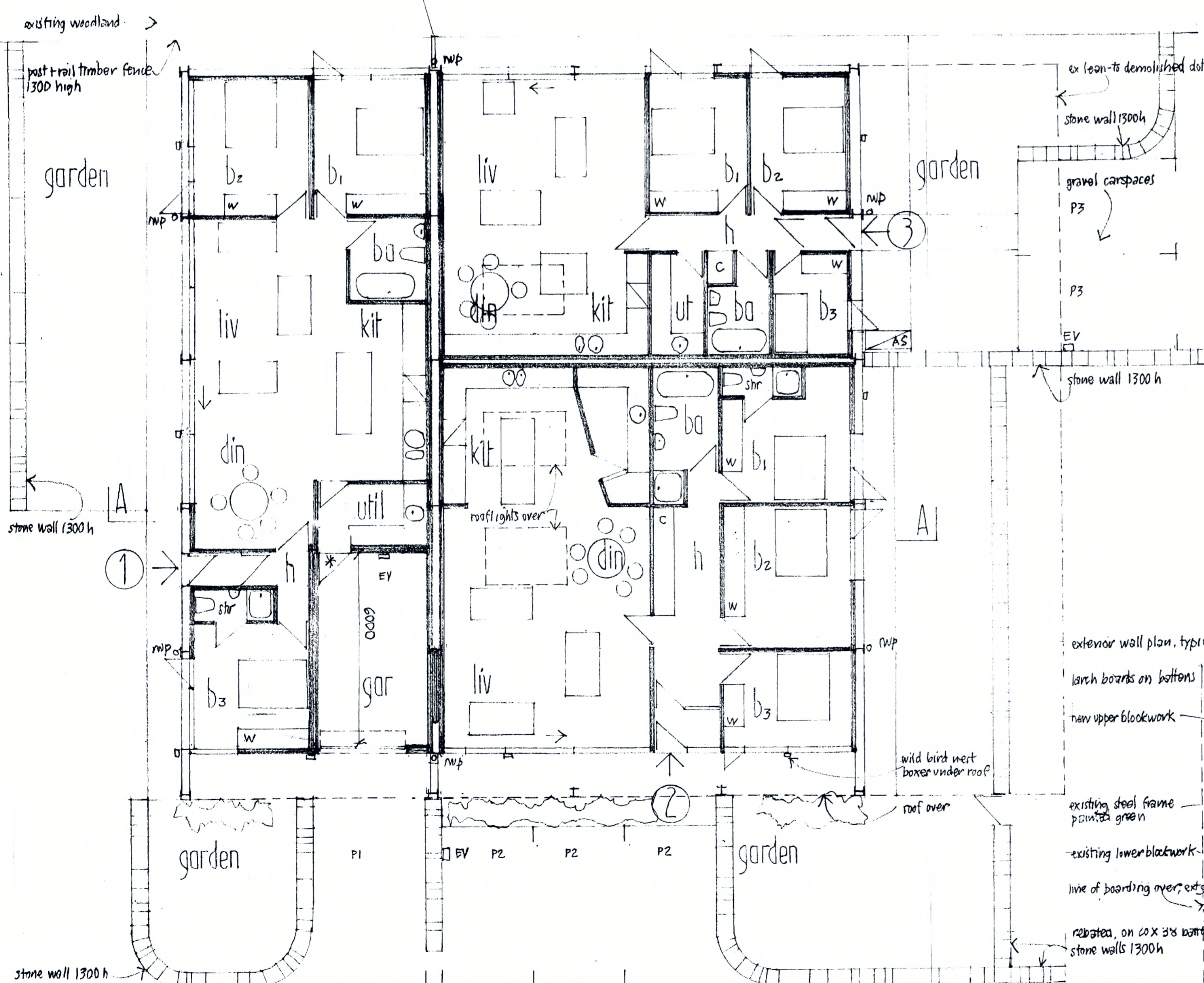
exty blackwork



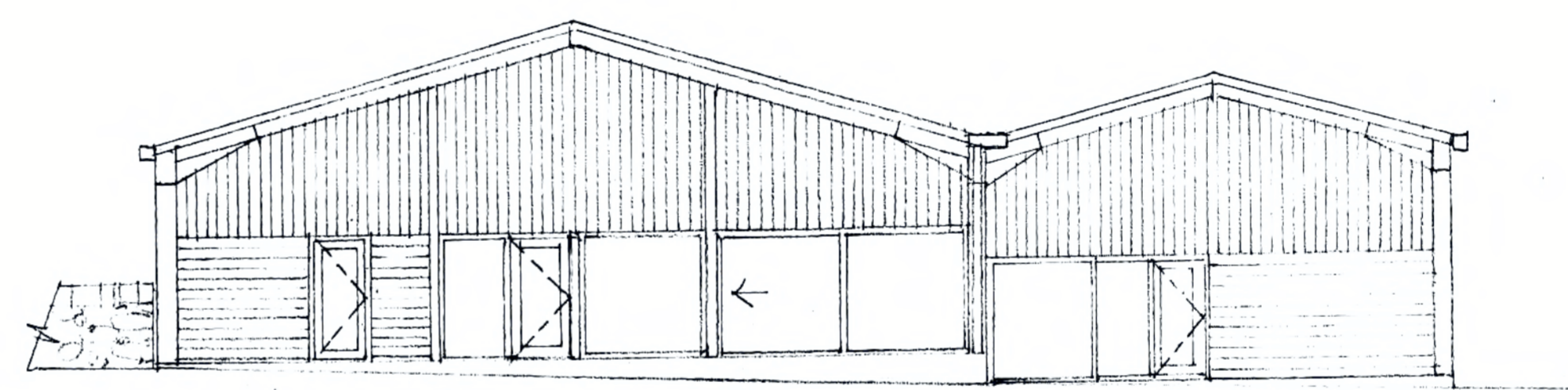
LOCATION 1:2000

SITE/ROOF 1:500

existing building footprint 645m² gross
 demolition 140m²
 converted floor space:
 unit 1 161m² surplus: 161m²
 unit 2 157m² 157m²
 unit 3 117m² 117m²
 total 435m²
 new trees - total 20 no
 3-6m standards, feathered, stake + tie to each tree, planted
 in prepared pits, in mixed groups on grassland
 10 no hawthorn
 10 no silver birch
 rev A' 3-3-23 unit 1 garage length amended to 6000



PLAN



NORTH

exterior wall plan, typical 1:5 scale

larch boards on bottom

new upper blockwork

existing steel frame painted green

existing lower blockwork

line of boarding over exty

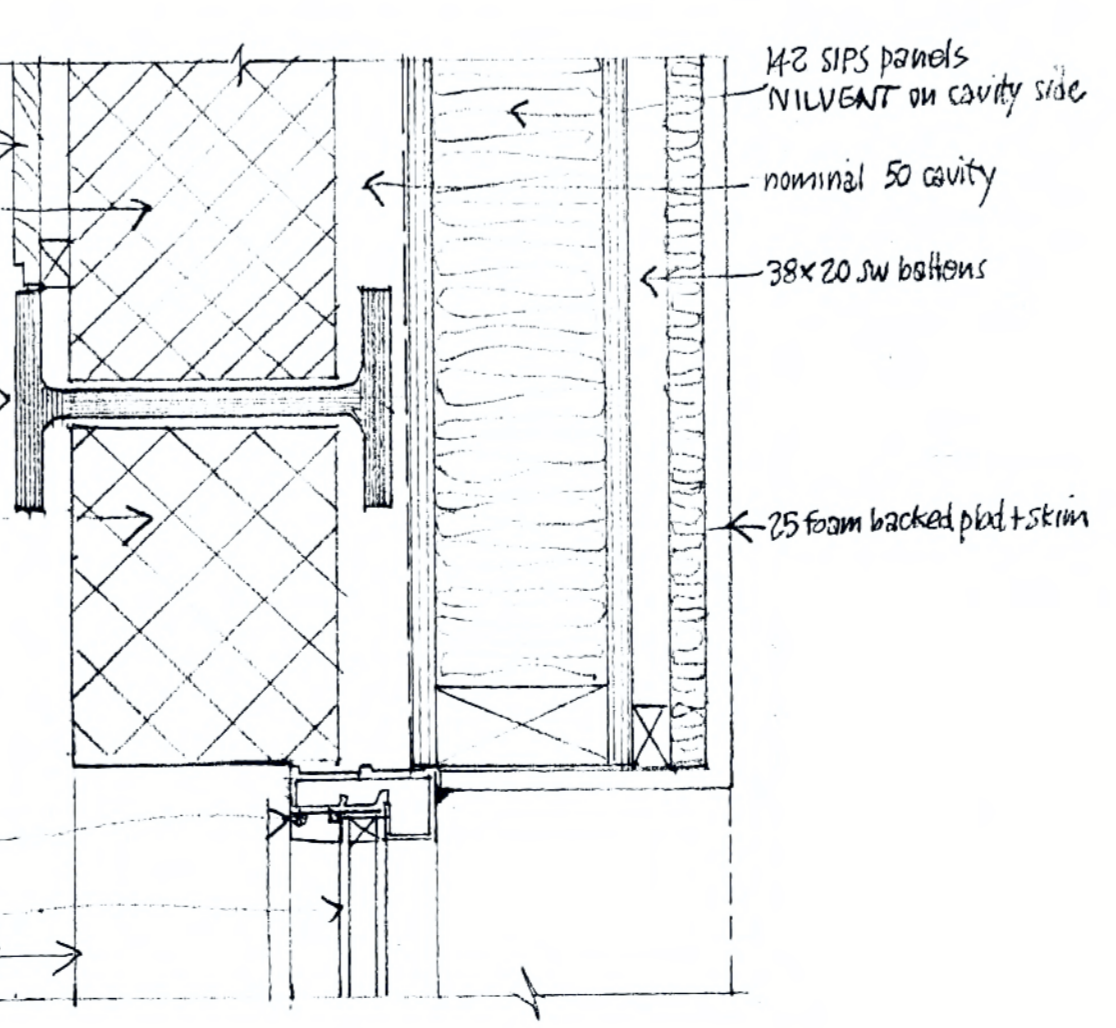
rebated on 20x38 battens

stone walls 1300h

thermal break alum frames clip on exterior beads

24mm double glazed unit

pressed alum sill



42 SIPS panels

WILVENT on cavity side

nominal 50 cavity

38x20.2w battens

75 foam backed pld + skin

PROPOSED
LEYS LANE BARN

scale 1:100 January 2023



JOHN & JENNIFER WHARTON : ARCHITECT DESIGNERS
 Craven House
 Brook View
 Garsdale
 SKIPTON
 North Yorkshire BD23 3EX tel 01756 782706

3074.2A