



WELL PRESENTED & EXTENDED FOUR BEDROOM, TWO BATHROOM FAMILY HOME

West Way, Rickmansworth, Hertfordshire, WD3 7ER



- RECEPTION ROOM & DINING ROOM
- KITCHEN
- STUDY
- GUEST SUITE WITH ENSUITE SHOWER ROOM
- GUEST WC
- THREE BEDROOMS
- FAMILY BATHROOM
- REAR GARDEN & OFF-STREET PARKING
- SCOPE TO EXTEND (STPP)
- NO ONWARD CHAIN

Description

A fantastic four-bedroom, two-bathroom extended family home with generously proportioned interiors, a sizeable rear garden, and off-street parking. This property is ideally placed for local amenities, schools and transport links, has further scope to extend (STPP) and has been within the same family for 40 years.

The ground floor comprises an entrance hallway with a guest WC, and stairs to the first floor. There is a spacious, open plan reception room with feature fireplace with patio doors opening out to the garden. The kitchen features a variety of modern units and a large storage cupboard. Off the kitchen is a dining room with a door out to the garden and access to a study and a guest suite with ensuite shower room.





To the first floor there are three well-appointed bedrooms with two boasting fitted wardrobes and a family bathroom.

Externally, this property offers a sizeable rear garden that is laid to lawn with shrub and flowerbed borders and a large patio area to enjoy outside dining. To the front is a small garden with a driveway providing off-street parking and a garage.

Location

Rickmansworth town centre has a wide range of boutique shops, coffee houses, restaurants and major supermarkets. The Metropolitan and Chiltern line train services connect you to London Baker Street, Marylebone Station and beyond. The M25 motorway is available at both junction 17 and 18, connecting you to the national motorway network. Major London airports are also within reach. The area is well served for good quality private and state schools for all ages. Chorleywood and Rickmansworth offer everything for the sporting individual from rugby, cricket, football, tennis, horse riding and golf. Rickmansworth Aquadrome is an ideal setting for walks, sailing, fishing and water skiing.

Additional Information

Tenure: Freehold

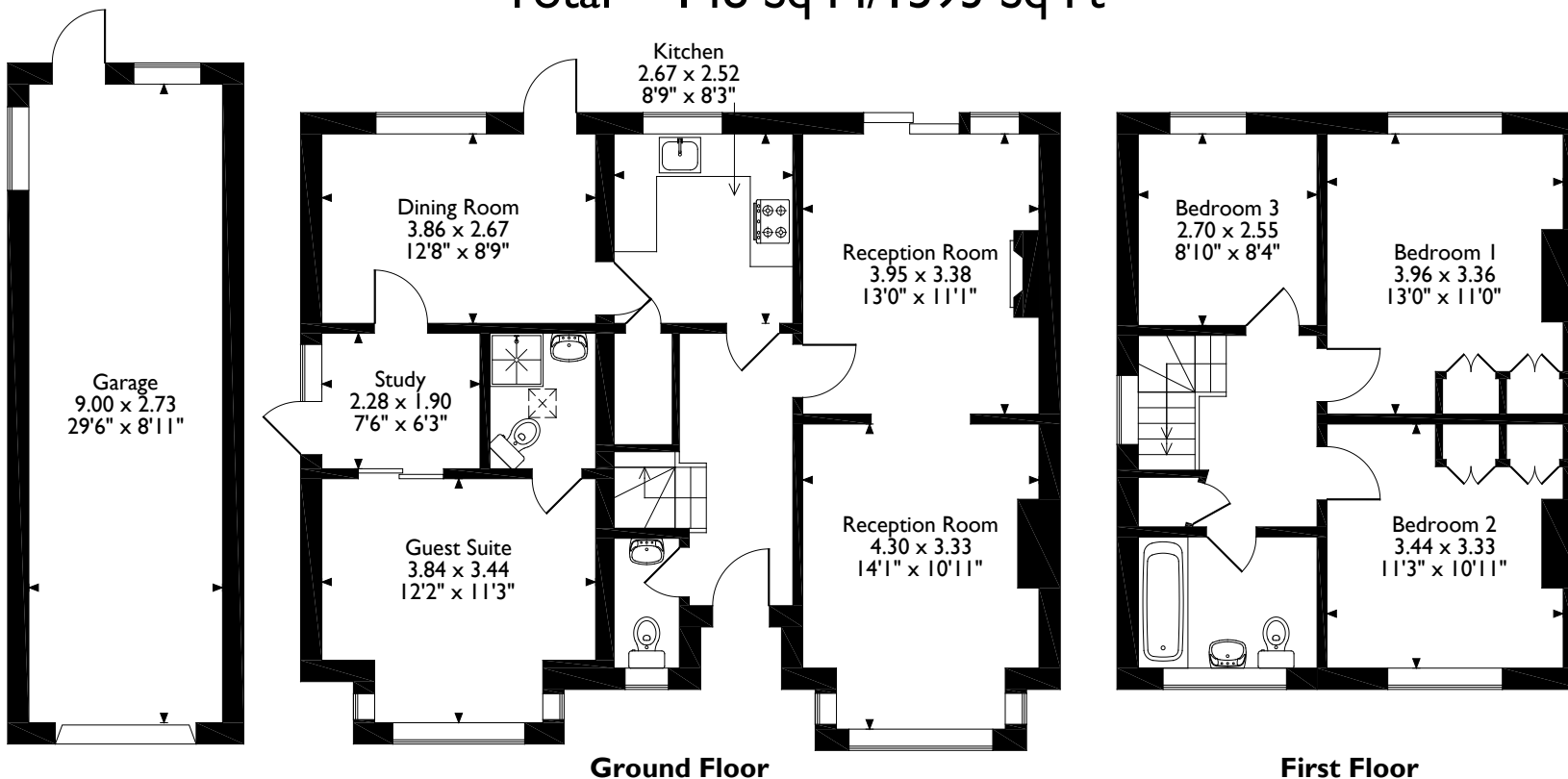
Local Authority: Three Rivers District Council

Council Tax: Band F

Energy Efficiency Rating: Band F



West Way, Rickmansworth, Hertfordshire
 Approximate Gross Internal Area
 Main House = 123 Sq M/1324 Sq Ft
 Garage = 25 Sq M/269 Sq Ft
 Total = 148 Sq M/1593 Sq Ft



Please note that the location of doors, windows and other items are approximate and this floorplan is to be used for illustrative purposes only. Unauthorized reproduction is prohibited.



130 High Street, Rickmansworth, Hertfordshire, WD3 1AB

Tel: 01923 777762 rickmansworth@robsonswb.com

www.robsonswb.com

www.
 the
 londonoffice.co.uk
 40 ST JAMES'S PLACE SW1