

Love Homes



Austen Avenue, Flitwick, Bedfordshire MK45 1GP

Beautifully presented family home in sought-after modern development on Flitwick's edge offers semi-rural tranquility with excellent commuter links. Spread over three floors, it features light-filled living spaces, stylish kitchen, double bedrooms, en-suite, and south/westerly facing garden. Ideal for professionals, families, and dog walkers, close to amenities and countryside.



This property is presented by Duncan Stead - a Love Homes property expert with over 25 years' experience.

Find out more about this property by scanning the QR code.



1.0m



3



1



2

Tenure: Freehold

Council Tax: D

Flitwick & Ampthill 01525 713111



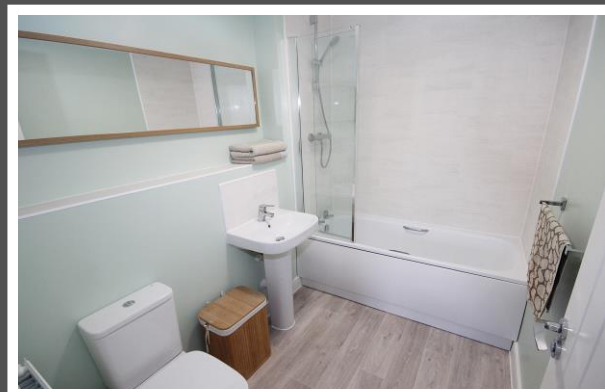
Barton-le-Clay and Luton 01582 882440



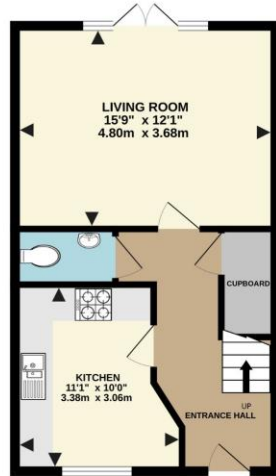
Biggleswade & Sandy 01767 669222



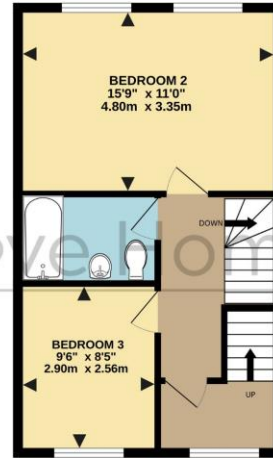
"Having owned this property since new, we've loved living here and have made many friends who are at a similar stage in life to us and it is only work commitments that are making us move. The size of the bedrooms won us over, the main bedroom on the top floor is huge and even our 2nd bedroom is bigger than most main bedrooms we saw when house hunting. We were lucky to choose such a good plot, quite open at the front but also benefitting from a south/west facing garden - we get the sun throughout the day which is great for alfresco dining and entertaining! Not only that but having the Leisure Centre and wonderful countryside walks on our doorstep has been an added bonus".



GROUND FLOOR  
419 sq.ft. (38.9 sq.m.) approx.



1ST FLOOR  
418 sq.ft. (38.9 sq.m.) approx.



2ND FLOOR  
315 sq.ft. (29.3 sq.m.) approx.



TOTAL FLOOR AREA: 1152 sq.ft. (107.1 sq.m.) approx.

Drawn by Love Homes for illustrative purposes only. Measurements and areas shown are approximate. Made with Metropix ©2024

Score	Energy rating	Current	Potential
92+	A		
81-91	B	84 B	84 B
69-80	C		
55-68	D		
39-54	E		
21-38	F		
1-20	G		



These particulars are set out as a general outline in accordance with the Property Misdescriptions Act (1991) only for the guidance of intending purchasers or lessees, and do not constitute any part of an offer or contract. Details are given without any responsibility, and any intending purchasers, lessees or third parties should not rely on them as statements or representations of fact but must satisfy themselves by inspection or otherwise as to the correctness of each of them. We have not carried out a structural survey and the services, appliances and specific fittings have not been tested. All photographs, measurements, floor plans and distances referred to are given as a guide only and should not be relied upon for the purchase of carpets or any other fixtures or fittings. Gardens, roof terraces, balconies and communal gardens as well as tenure and lease details cannot have their accuracy guaranteed for intending purchasers. Lease details, service ground rent (where applicable) are given as a guide only and should be checked and confirmed by your solicitor prior to exchange of contracts. No person in the employment of Love Homes has any authority to make any representation or warranty whatever in relation to this property. Purchase prices, rents or other prices quoted are correct at the date of publication and, unless otherwise stated, are exclusive of VAT. We retain the copyright in all advertising material used to market this Property. All information is as advised by the seller and subject to change. Council tax bands can be subject to change by the local council.

5 The Russell Centre, Coniston Road, Flitwick, MK45 1QY  
Tel: 01525 713111

Email: [flitwick@lovehomes.uk](mailto:flitwick@lovehomes.uk)

[www.lovehomes.uk](http://www.lovehomes.uk)



**Love Homes**