




HOPE STREET HOUSE
BUSINESS CENTRE



Hope Street House Business Centre, Crook

Prime office location in the centre of Crook, offering modern, flexible office spaces ranging from 118-624 sqft. Competitive pricing, essential amenities (including superfast fibre), and 24-hour access. Contact Weardale Property Agency for the latest suite availability, prices and to book a viewing.

Call 01388 43 44 45

- Flexible office space To Let
- Single story accessible business centre
- Recently renovated
- Multiple self contained office suites available
- Ranging from 118 sqft to 624sqft
- Prices from £75-£110 per week including services
- All suites have use of the communal reception area and kitchen plus WC's
- 24 hour accessible available
- Located on Hope Street, Crook.



Office Suites Now Available

Introducing an exciting opportunity for businesses seeking an office location in the centre of Crook. Ideally situated on the prominent Hope Street, this commercial property offers a range of flexible office spaces suitable for various business needs.

Hope Street House is a single-story accessible business centre that has undergone recent renovations, this office complex features multiple self-contained, office suites available for immediate occupancy. With individual office sizes varying from 118 sqft to 624 sqft, tenants have the freedom to select a space that aligns perfectly with their requirements. The competitive pricing structure further enhances the appeal of this property, with leasing options ranging from £75 to £110 per week, inclusive of essential services, including superfast fibre.



Everything You Need on Site

In addition to the competitive pricing, tenants benefit from 24-hour access to the accommodation via a modern door entry system, promoting flexibility and convenience. Each suite also has the benefit of access to the communal reception area, a well-appointed kitchen facility, and conveniently located WC's, ensuring that all essential amenities are readily available on-site.

Centrally located on High Street, this property enjoys high visibility and easy access, contributing to its desirability for businesses looking to establish a strong presence within the local area. The position of the property within the town provides proximity to a range of local amenities, including shops, restaurants, and transport links.

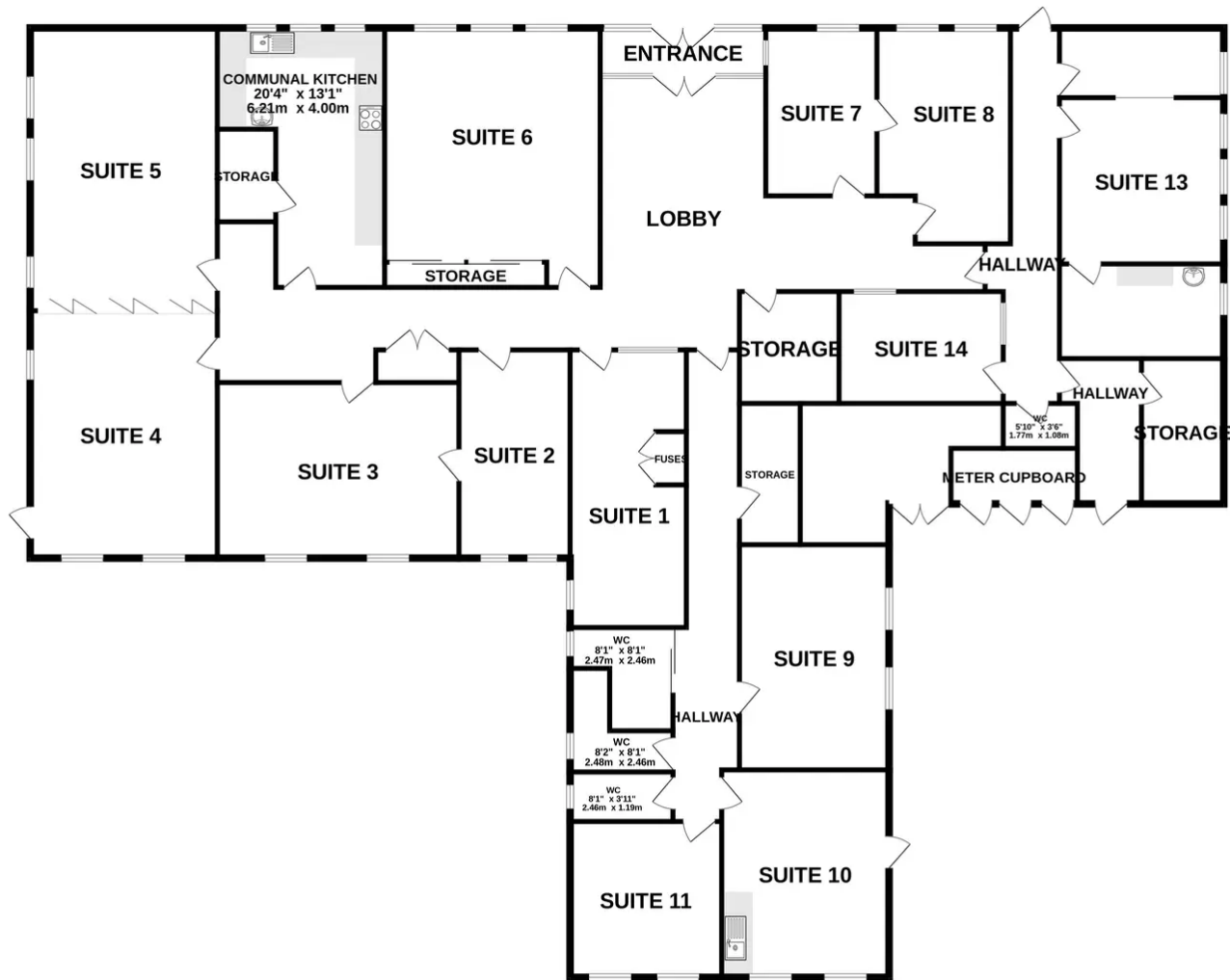
Contact Weardale Property Agency for the latest suite availability, prices and to book a viewing.

01388 43 44 45





GROUND FLOOR
4612 sq.ft. (428.5 sq.m.) approx.



COMMERCIAL BUILDING MULTIPLE SUITES

TOTAL FLOOR AREA : 4612 sq.ft. (428.5 sq.m.) approx.

Whilst every attempt has been made to ensure the accuracy of the floorplan contained here, measurements of doors, windows, rooms and any other items are approximate and no responsibility is taken for any error, omission or mis-statement. This plan is for illustrative purposes only and should be used as such by any prospective purchaser. The services, systems and appliances shown have not been tested and no guarantee as to their operability or efficiency can be given.
Made with Metropix ©2023



WEARDALE
PROPERTY AGENCY

Although every care has been made to ensure that these particulars are accurate, no responsibility for any inaccurate information can be accepted, the information is provided as a general guide only and does not form part of any contract. All measurements are approximate. Any intending purchaser should satisfy themselves of the accuracy of the information and should not rely solely on the information outlined in this advertisement.



rightmove 

ZOOPLA

OnTheMarket 