

The Hallsteads

Kniveton, Ashbourne, DE6 1JT

John
German





The Hallsteads

Kniveton, Ashbourne, DE6 1JT

£325,000

Extended four-bedroomed end town house situated on an enviable plot with wrap around garden enjoying a southerly aspect with stunning open countryside views of the surrounding area. An ideal family home, located in the highly sought-after village of Kniveton.



Presenting a fantastic opportunity with no upward chain, this charming extended family residence boasts an enviable location in the heart of Kniveton village. Offering four bedrooms, this end town house has been thoughtfully extended, providing ample space for comfortable living. Enjoy breathtaking views of the surrounding countryside, particularly from the southerly-facing aspect. Features include oil-fired central heating and double glazing throughout. Internally, the property comprises an entrance hallway, convenient utility area, guest cloakroom, and a spacious open-plan dining/sitting room alongside a well-appointed kitchen. Upstairs, the accommodation consists of a master bedroom with an en-suite, three additional bedrooms, and a family bathroom.

Kniveton is a very pleasant village on the southern edge of the Peak District National Park with local facilities including a church, village hall, primary school and public house. The village is only 3 miles north east of the attractive and stylish market town of Ashbourne known as the gateway to Dovedale and the famous Peak District National Park. The town offers a varied and eclectic mix of shops, together with schools, banks, restaurants, a post office and supermarket. Derby (13 miles) provides further facilities and Derby's ring-road affords quick and easy access to the motorway network. Sailing and fishing are available at Carsington Water (3 miles) and the property also benefits from the abundance of further leisure opportunities afforded by its location within the Peak District National Park.

Accommodation - having composite front door providing access to:

Storm Porch - with tiled flooring. Concertina door providing access to a:

Utility Area - having preparation surfaces with appliance space and plumbing for washing machine. Oil fire boiler.

Reception Hallway - having central heating radiator, wall mounted electric circuit board. Doors providing access to open plan living area, guest cloakroom and kitchen area. Staircase to first floor with under stairs storage cupboard.

Guest Cloakroom - With low level WC, wash hand basin with chrome mixer tap over and vanity base cupboards beneath. Electric extractor fan.

Kitchen - having roll edged preparation surfaces with inset composite sink with adjacent drainer and chrome mixer tap over with splashback surround. Range of cupboards and drawers beneath. Appliance space and plumbing for dishwasher. Double fan assisted oven. Four ring electric hob and extractor fan canopy over. Complementary wall mounted cupboards. Sealed unit double glazed windows in uPVC frame to front. Opening providing access to:

L-Shaped Open Plan Dining / Sitting Area - having feature fireplace with multi fuel burner and marble hearth. Built-in storage cupboards and shelving. Central heating radiator. Aluminium bi-fold doors opens to south facing garden, enjoying stunning open countryside views of the surrounding area. Sealed unit double glazed window in uPVC frame to front and rear. uPVC door providing access to rear. Door providing access to reception hallway.

First Floor Landing - having loft hatch access. Airing cupboard housing hot water tank and separate useful over stairs storage cupboard. Doors providing access to bedrooms and bathroom.

Bedroom One - having central heating radiator. Sealed unit double glazed window in uPVC frame to rear. Sealed unit uPVC French doors opening onto a Juliette balcony providing stunning elevated sweeping countryside views of the surrounding area. Door provides access to:

En-Suite - having low level WC, wash hand basin with chrome mixer tap over with vanity base cupboards beneath. Double shower cubicle with electric shower over. Wall mounted smart electric mirrored cabinet. Wall mounted built-in electric toothbrush charging point. Electric extractor fan. Sealed unit double glazed opaque window in uPVC frame to front.

Bedroom Two - Central heating radiator. Sealed unit double glazed window in uPVC frame to front.

Bedroom Three - Sealed unit double glazed window in uPVC frame to rear.

Bedroom Four - having central heating radiator. Sealed unit double glazed window in uPVC frame to rear.

Family Bathroom - 2.06m x 1.65m (6'9" x 5'4") - having a white suite comprising of pedestal wash hand basin with chrome mixer tap over, low level WC, bath with chrome mains shower over and glass shower screen, chrome ladder style heated towel rail, electric extractor fan and sealed unit double glazed opaque window in uPVC frame to front.

Outside - Undoubtedly, one of the main selling features of the property is the enviable corner plot, benefitting from stunning open countryside views of the surrounding area, whilst also offering the opportunity to further extend (subject to necessary permissions).

Please Note - While there is no official off-street parking at the property. Parking is available in the cul-de-sac, in front of the property for residents.

Tenure: Freehold (purchasers are advised to satisfy themselves as to the tenure via their legal representative).

Property construction: Standard

Parking: On road

Electricity supply: Mains

Water supply: Mains

Sewerage: Mains

Heating: Oil

(Purchasers are advised to satisfy themselves as to the suitability).

Broadband type: Fibre - See Ofcom link for speed: <https://checker.ofcom.org.uk/>

Mobile signal/coverage: See Ofcom link <https://checker.ofcom.org.uk/>

Local Authority/Tax Band: Derbyshire Dales District Council / Tax Band C

Useful Websites: www.gov.uk/government/organisations/environment-agency

Our Ref: JGA/26032024

The property information provided by John German Estate Agents Ltd is based on enquiries made of the vendor and from information available in the public domain. If there is any point on which you require further clarification, please contact the office and we will be pleased to check the information for you, particularly if contemplating travelling some distance to view the property. Please note if your enquiry is of a legal or structural nature, we advise you to seek advice from a qualified professional in their relevant field.





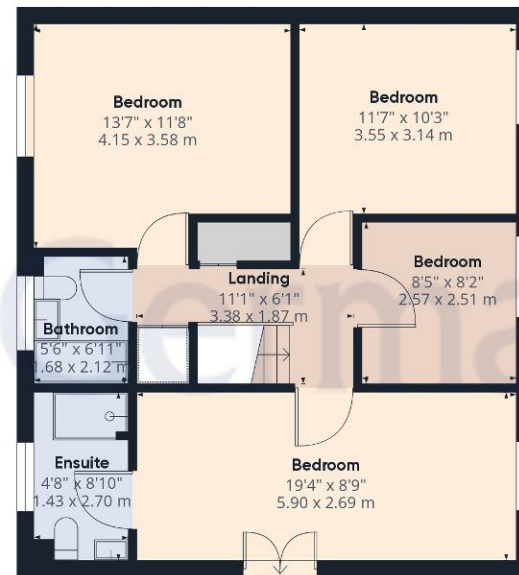


Ground Floor

Approximate total area⁽¹⁾

1407.78 ft²

130.79 m²



Floor 1

(1) Excluding balconies and terraces

While every attempt has been made to ensure accuracy, all measurements are approximate, not to scale. This floor plan is for illustrative purposes only.

GIRAFFE360



Agents' Notes

These particulars do not constitute an offer or a contract neither do they form part of an offer or contract. The vendor does not make or give and Messrs. John German nor any person employed has any authority to make or give any representation or warranty, written or oral, in relation to this property. Whilst we endeavour to make our sales details accurate and reliable, if there is any point which is of particular importance to you, please contact the office and we will be pleased to check the information for you, particularly if contemplating travelling some distance to view the property. None of the services or appliances to the property have been tested and any prospective purchasers should satisfy themselves as to their adequacy prior to committing themselves to purchase.

Referral Fees

Mortgage Services - We routinely refer all clients to APR Money Limited. It is your decision whether you choose to deal with APR Money Limited. In making that decision, you should know that we receive on average £60 per referral from APR Money Limited.

Conveyancing Services - If we refer clients to recommended conveyancers, it is your decision whether you choose to deal with this conveyancer. In making that decision, you should know that we receive on average £150 per referral.

Survey Services - If we refer clients to recommended surveyors, it is your decision whether you choose to deal with this surveyor. In making that decision, you should know that we receive up to £90 per referral.

Score	Energy rating	Current	Potential
92+	A		
81-91	B		
69-80	C		76 C
55-68	D	58 D	
39-54	E		
21-38	F		
1-20	G		



John German

Compton House, Shawcroft, Ashbourne, Derbyshire, DE6 1GD

01335 340730

ashbourne@johngerman.co.uk

Ashbourne | Ashby de la Zouch | Barton under Needwood
Burton upon Trent | Derby | East Leake | Lichfield
Loughborough | Stafford | Uttoxeter

JohnGerman.co.uk Sales and Lettings Agent



