



## A CHARMING THREE BEDROOM, TWO BATHROOM FAMILY HOME

Aspen Grove, Pinner, HA5 2NL



# A CHARMING THREE BEDROOM, TWO BATHROOM FAMILY HOME

Aspen Grove, Pinner, HA5 2NL

**GUEST WC • GENEROUS LOUNGE • KITCHEN  
/ DINING ROOM • PRINCIPAL BEDROOM  
WITH EN-SUITE • TWO FURTHER BEDROOMS  
• FAMILY BATHROOM • PRIVATE GARDEN •  
ALLOCATED PARKING FOR TWO CARS •**

## Description

Nestled away on a peaceful road within easy reach of local high streets and excellent transport links, is this charming three-bedroom, two-bathroom home.

The ground floor comprises an entrance porch with a guest WC, a generous reception room with stairs to the first floor, and a bright kitchen / dining room. The kitchen provides plenty of storage space with an integrated hob & oven, a good-sized dining area and sliding doors opening out to the garden. To the first floor there is a principal bedroom with an en-suite shower room, two further bedrooms and a family bathroom.

The property further benefits from a private rear garden and allocated parking for two cars, directly in front of the property.





### **Location**

Aspen close is nestled away off Wiltshire Lane, just a short distance from Northwood Hills, Eastcote and Pinner high streets. All high streets provide a variety of shopping facilities, restaurants, coffee houses and popular supermarkets. For commuters, nearby Northwood Hills Underground Station provides a frequent service into London via the Metropolitan Line, with Eastcote Station providing both the Metropolitan Line and the Piccadilly Line.

The area is well served by local schooling with Haydon Secondary School and Coteford Junior School close by. There are also plenty of local parks and open spaces, with Ruislip Lido and Ruislip Woods just around the corner.

### **Additional Information**

Guide Price: Price on Application

Tenure: Freehold

Local Authority: London Borough of Hillingdon

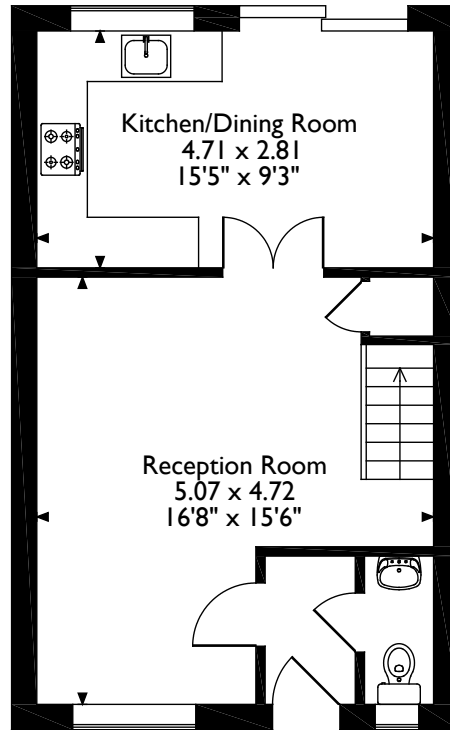
Council Tax: Band E

Energy Efficiency Rating: Band C

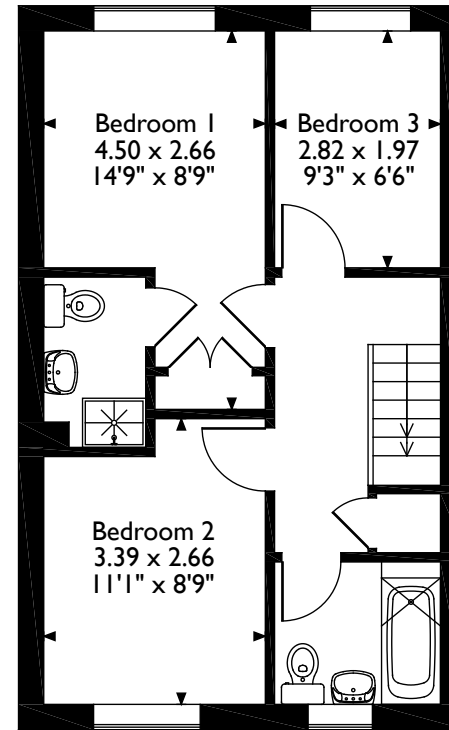


# Aspen Grove, Pinner

## Approximate Gross Internal Area 76 Sq M/818 Sq Ft



**Ground Floor**



**First Floor**

Please note that the location of doors, windows and other items are approximate and this floorplan is to be used for illustrative purposes only. Unauthorized reproduction is prohibited.

**ROBSONS**

1 High Street, Pinner, Middlesex, HA5 5PJ  
Tel: 0208 866 8083 Pinner@robsonswb.com

[www.robsonswb.com](http://www.robsonswb.com)

www.  
the  
londonoffice.co.uk  
40 ST JAMES'S PLACE SW1