

THE DUTCH HOUSE

307-308 High Holborn, WC1

NEW FULLY FITTED WORKSPACE
SINGLE UNITS OF 950 SQ FT

NEWLY REFURBISHED, FULLY FITTED OFFICE SUITES

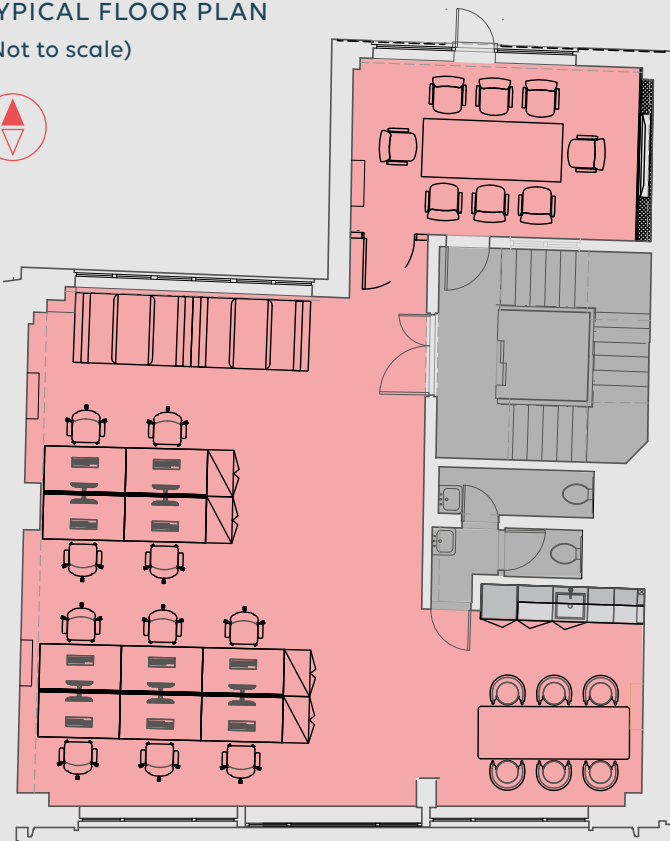
The Dutch House offers 950 sq ft floorplates of newly refurbished office space. The 1st, 3rd and 4th floors have undergone a comprehensive refurbishment by Studio11 to a CAT A+ specification.

The end-of-journey facilities and reception have also undergone a comprehensive refurbishment.



FLOOR	AREA (SQ FT)	AVAILABILITY	DESK SUITABILITY NO
4th Floor	950	Available	8 - 14
3rd Floor	950	Available	8 - 14
1st Floor	950	Available	8 - 14
TOTAL	2,850		

TYPICAL FLOOR PLAN
(Not to scale)



HIGH HOLBORN



NEWLY REFURBISHED FLOORS



FULLY FITTED AND FURNISHED



REFURBISHED ENTRANCE



WOODEN FLOOR



PERIMETER COMFORT COOLING UNITS



STRIP LED LIGHTING



BRAND NEW SHOWER FACILITIES & CYCLE STORAGE

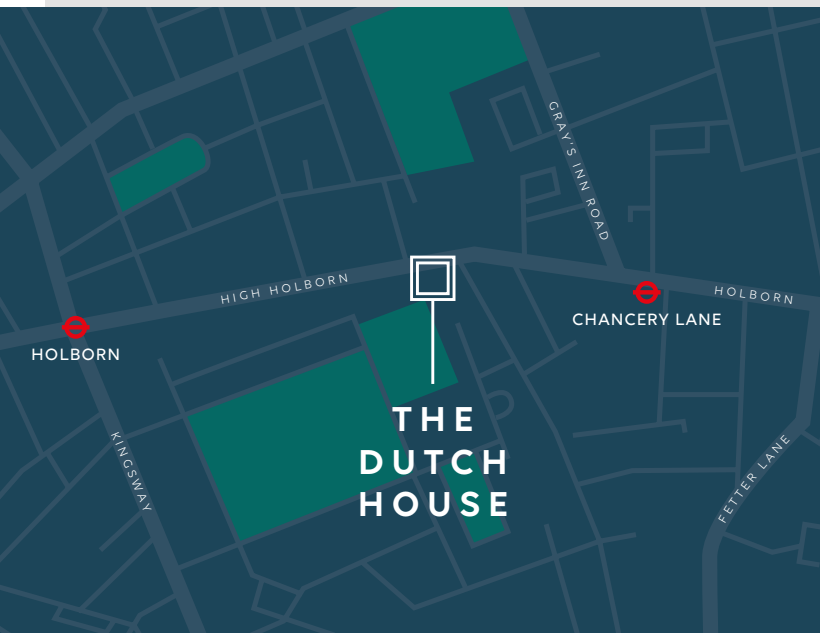


FITTED KITCHENS



IDEALLY LOCATED ON HIGH HOLBORN

As a result, there are a wealth of local amenities right on the doorstep, such as Joe and the Juice, Amazon Fresh and Boots. Additionally, it benefits from great transport links, with Holborn, Chancery Lane, Temple and Farringdon Stations all within a short walk.





Farebrother

Jules Hind
07976 839 011
jhind@farebrother.com

Harvey Widdowson
07732 649 308
hwiddowson@farebrother.com

Owned by
gms



Compton

Andy Gilbert
07833 993 714
ag@compton.london

Josh Miller
07917 725 365
jm@compton.london

Subject to contract. Farebrother for themselves and the vendor of this property give notice that these particulars do not form, or form part of, any offer or contract. They are intended to give fair description of the property and whilst every effort has been made to ensure their accuracy this cannot be guaranteed. Any intending purchaser must therefore satisfy themselves by inspection or otherwise. Neither Farebrother nor any of its employees, has any authority to make or give any further representations or warranty whatsoever in relation to this property. All prices and rents quoted are net of vat. June 2024