



Guide Price £650,000-£700,000. A rare find with a generous plot and heated pool! Introducing this fully renovated, detached family home, offering a combination of luxury, comfort, and convenience in an enviable location on the Norfolk Broads. With its impeccable presentation, luxurious amenities, 40ft mooring and serene setting, this property is not to be missed!

LOCATION

Nestled within the picturesque Norfolk Broads, Willows, The Street in Dilham offers a countryside location with easy access to nearby amenities. The village of Dilham itself boasts a charming village hall and the inviting Cross Keys pub, perfect for socialising with locals. For additional conveniences and services, residents can easily access neighbouring destinations such as North Walsham, which offers schooling options, a supermarket and a train station for convenient travel. Nearby Stalham provides even more amenities, ensuring residents enjoy a well-rounded lifestyle in this idyllic Norfolk Broads setting.

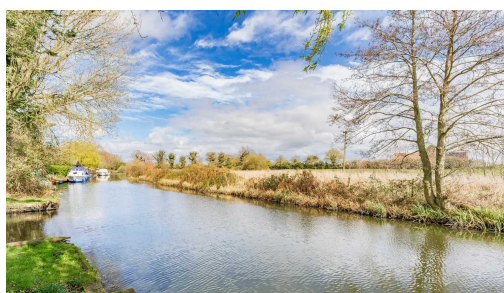
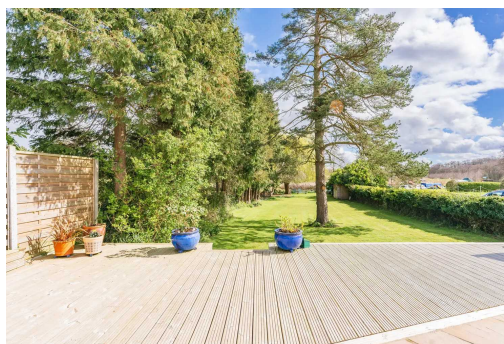
THE STREET



Guide Price £650,000-£700,000. A rare find with a generous plot and heated pool! Introducing this fully renovated, detached family home, offering a combination of luxury, comfort, and convenience in an enviable location on the Norfolk Broads. With its impeccable presentation, luxurious amenities, 40ft mooring and serene setting, this property is not to be missed!

LOCATION

Nestled within the picturesque Norfolk Broads, Willows, The Street in Dilham offers a countryside location with easy access to nearby amenities



Guide Price £650,000-£700,000. A rare find with a generous plot and heated pool! Introducing this fully renovated, detached family home, offering a combination of luxury, comfort, and convenience in an enviable location on the Norfolk Broads. With its impeccable presentation, luxurious amenities, 40ft mooring and serene setting, this property is not to be missed!

LOCATION

Nestled within the picturesque Norfolk Broads, Willows, The Street in Dilham offers a countryside location with easy access to nearby amenities. The village of Dilham itself boasts a charming village hall and the inviting Cross Keys pub, perfect for socialising with locals. For additional conveniences and services, residents can easily access neighbouring destinations such as North Walsham, which offers schooling options, a supermarket and a train station for convenient travel. Nearby Stalham provides even more amenities, ensuring residents enjoy a well-rounded lifestyle in this idyllic Norfolk Broads setting.

THE STREET

Nestled in a serene setting on the Broads, this exceptional four-bedroom, detached home offers a tranquil retreat with luxurious amenities and stunning views. Boasting a 40ft mooring, this property is a boat enthusiast's dream come true, allowing for convenient access to the Norfolk waterways.

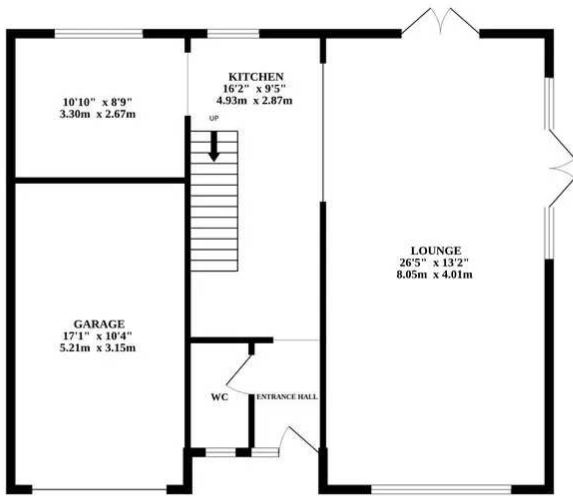
Approaching the property, you are greeted with ample off-road parking and a garage, providing convenience for residents and guests alike. As you step inside, a sense of warmth and comfort envelops you. The property exudes elegance and style throughout, with a meticulous attention to detail evident in every corner. Immaculately presented, the interior is both modern and inviting, offering a bright and airy feel that creates a sense of openness and tranquillity.

To the rear of the property, enjoy the spacious, open plan kitchen. Fitted with high quality gloss wall and base units, integrated appliances, open access into the lounge and a window overlooking the heated pool. Walking through to the lounge, take in the wealth of space and natural light that flows through from the double doors. Featuring a cosy log burner with a slate surround - this is the perfect spot to unwind and relax with family and friends.

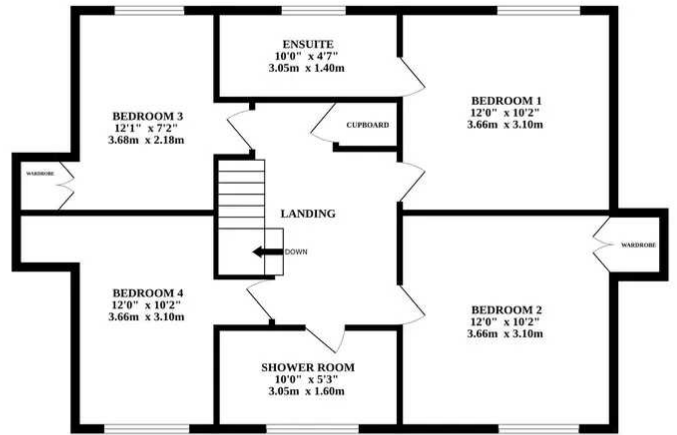
Stairs from the kitchen lead to the first floor landing where you can access all four bedrooms and the family shower room. The recently renovated ensuite in the master bedroom exudes sophistication, providing a private oasis for relaxation and rejuvenation. Each of the four bedrooms offers ample space and comfort, ensuring that residents have a peaceful sanctuary to retreat to at the end of the day.



GROUND FLOOR



1ST FLOOR



Whilst every attempt has been made to ensure the accuracy of the floorplan contained here, measurements of doors, windows, rooms and any other items are approximate and no responsibility is taken for any error, omission or mis-statement. This plan is for illustrative purposes only and should be used as such by any prospective purchaser. The services, systems and appliances shown have not been tested and no guarantee as to their operability or efficiency can be given.
Made with Metropix ©2024

You can include any text here. The text can be modified upon generating your brochure.

You can include any text here. The text can be modified upon generating your brochure.

