



4 Wyndham Court, Midhurst, West Sussex, GU29 9GA

Built by award winning developer Metis Homes in 2021, this immaculate apartment forms part of a unique collection of homes



- ▶ **Impressive First Floor Apartment**
- ▶ **Juliette Balcony with Views**
- ▶ **Outside Storage Cupboard**
- ▶ **Immaculate Interior**
- ▶ **Two Allocated Parking Spaces**
- ▶ **Spacious Open-Plan Kitchen / Dining/ Sitting Room**
- ▶ **Two Bathrooms (One Ensuite)**
- ▶ **Integrated Kitchen Appliances**
- ▶ **Electric Car Charging Point**
- ▶ **Town Centre Location**

Built by award winning developer Metis Homes in 2021, No 4 forms part of a unique collection of homes offering the convenience of being moments from Midhurst high street and a high specification finish throughout.

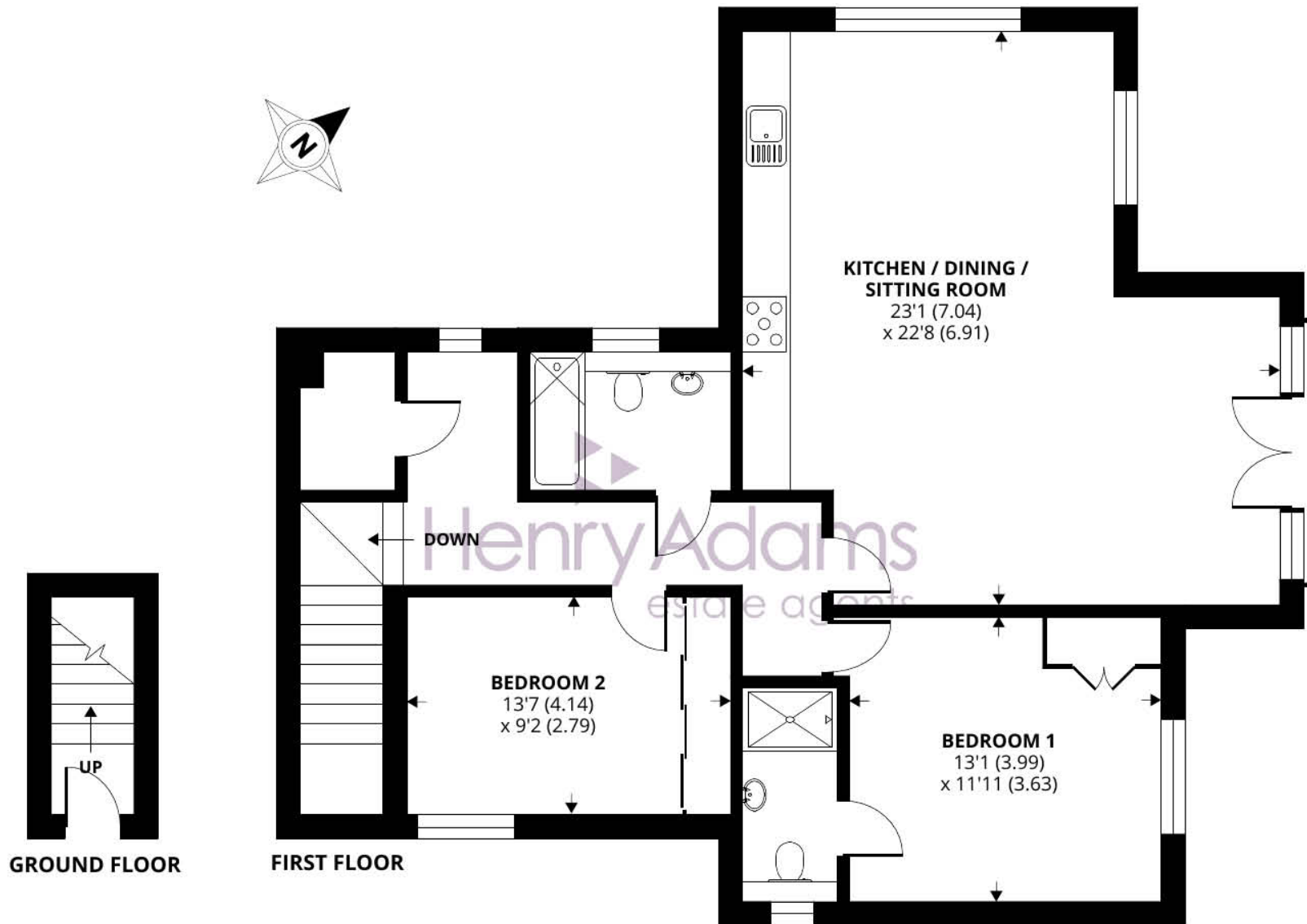
This light and spacious apartment is situated on the first floor to the rear of the development with the benefit of its own private entrance and views over the communal gardens and neighbouring fields.

There are two double bedrooms and a family bathroom with the principal suite having its own built in storage and luxury ensuite shower room. A standout feature is the superb open-plan, double aspect living area which has a range of integrated appliances in the kitchen, ample space to dine and a large well proportioned sitting room area which includes Juliette balcony overlooking a semi-rural aspect.

The property also benefits from solar panels, a monitored alarm system and two allocated parking spaces with the availability of electric car charging points and visitor parking.

A stunning first floor, two bedroom apartment located in the heart of Midhurst with a high specification finish and easy access to everyday life and miles of glorious countryside. This immaculate apartment is ready to move straight into and a viewing is highly recommended to appreciate this bespoke, high quality home and the easy access it offers to everyday life.





Approximate Area = 1086 sq ft / 100.9 sq m

For identification only - Not to scale



Agents Note - Our particulars are for guidance only and are intended to give a fair overall summary of the property. They do not form part of any contract or offer, and should not be relied upon as a statement or representation of fact. Measurements, areas and distances are approximate only. Photographs may include lifestyle shots and pictures of local views. No undertaking is given as to the structural condition of the property, or any necessary consents or the operating ability or efficiency of any service, system or appliance. Please ask if you would like further information, especially before you travel to the property.

Location & Amenities

The thriving town of Midhurst resides on the Surrey and Sussex border. Full of listed buildings, attractive shops and narrow lanes, it's also blessed with charming hotels and restaurants. There are also primary schools, an Academy College, leisure complex, medical centre, a library, Sainsburys and the Cowdray Park golf course. The town has previously been declared as one of the best places to live in the South East by a Sunday Times survey which was based on a number of criteria including lifestyle, crime rate, schooling and house prices.

Discover more extensive havens of choice in nearby Haslemere and Chichester, while neighbouring Petworth has a variety of shops and National Trust parkland. There are plenty of leisure pursuits from walking, cycling and horse riding in the National Park, to shooting and fishing in the historic Cowdray Park. Sailors and theatre-goers will love Chichester and for racing enthusiasts, glorious Goodwood is within a short drive too.

For more information on the town log on to the visitmidhurst.com website.

