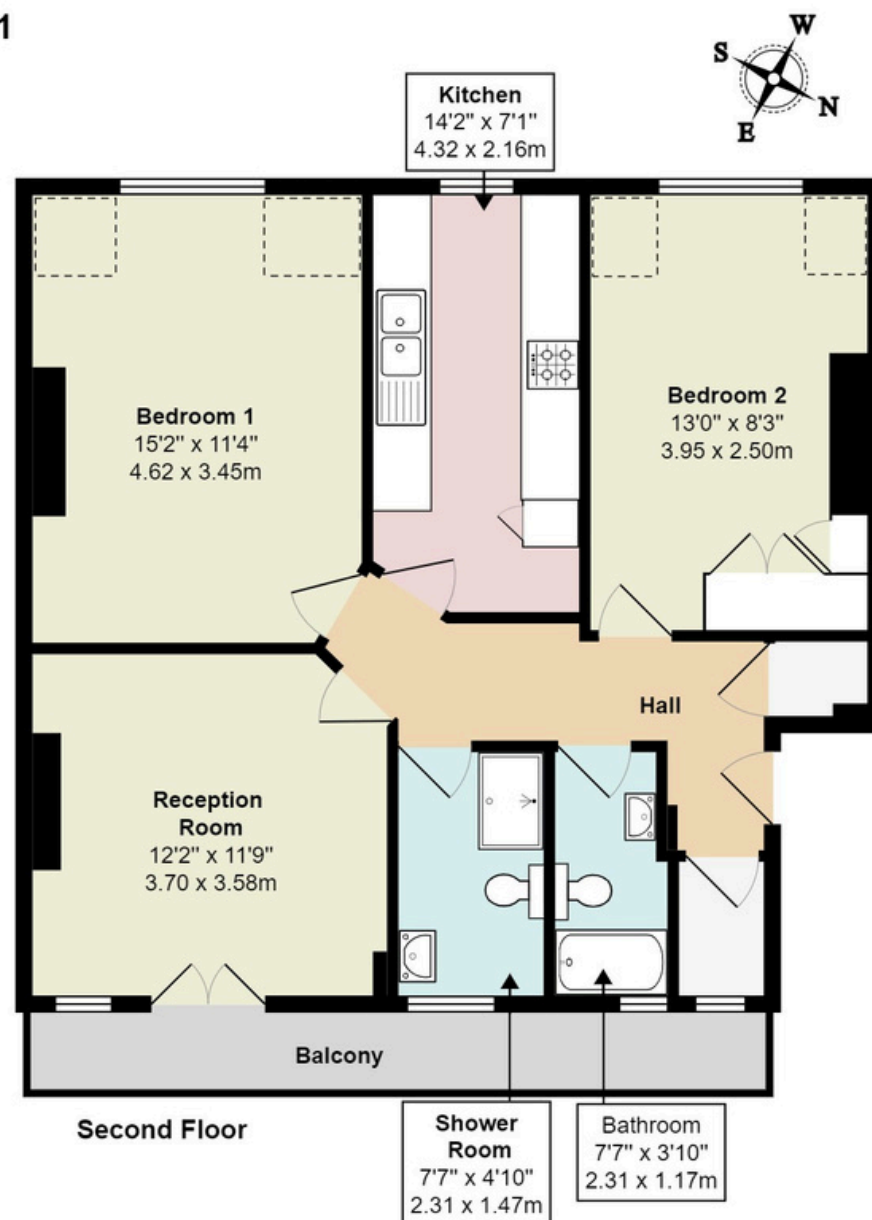




Temple Fortune House NW11

Total Area: 784 ft² ... 72.8 m²



All measurements are approximate and for display purposes only



Temple Fortune House, Temple Fortune Lane, NW11

Offers Over: £475,000

Introducing this delightful 2-bedroom apartment nestled within the serene Temple Fortune House. Boasting 2 bathrooms and a spacious reception area, this modern abode offers comfortable living in a tranquil environment.

Upon entry, you'll find a generously sized reception area adaptable to your preferences. The kitchen is smartly designed with integrated appliances and ample storage.

Two serene bedrooms provide peaceful retreats, complemented by two stylish bathrooms. Additional storage space is available in the attic.

Outside, residents can enjoy the communal garden. Conveniently located near Temple Fortune amenities, renowned Hampstead Garden Suburb schools, and various transportation links across London.

This is an unmissable opportunity for comfortable living in a highly sought-after London locale.

Tenure: Leasehold
Council Band: D
Lease Remaining: 140 Years
Service Charge: £2500 including sink fund



903-905 Finchley Road Golders Green London NW11 7PE
Telephone 020 8381 4970 Email info@moreland.uk.com

Registered Office Unit 8, Alpha Business Park, Travellers Close, Welham Green AL9 7NT Registered in England No. 3663497 Vat No. 701775936

Residential Sales Lettings Full Management Financial Services New Homes





Tenure Leasehold

785 ft2/ 73 m2

2 Bedroom

2 Bathroom

Street Parking

Score	Energy rating	Current	Potential
92+	A		
81-91	B		
69-80	C		
55-68	D		65 D
39-54	E	52 E	
21-38	F		
1-20	G		



903-905 Finchley Road Golders Green London NW11 7PE
Telephone 020 8381 4970 Email info@moreland.uk.com

Registered Office Unit 8, Alpha Business Park, Travellers Close, Welham Green AL9 7NT Registered in England No. 3663497 Vat No. 701775936
Residential Sales Lettings Full Management Financial Services New Homes

